



**2 1/2" DRY GAUGE**

- Plastic case (ABS)
- 2 1/2" diameter
- Bronze bourdon tube
- Brass socket
- Glass window
- Metal pointer
- Built-in restrictor
- 1/4" NPTM bottom mount

PART	DESCRIPTION
PG25030	30 PSI
PG25060	60 PSI
PG25100	100 PSI
PG25160	160 PSI
PG25200	200 PSI
PG25300	300 PSI
PG25400	400 PSI
PG25600	600 PSI
PG251000	1000 PSI



**2 1/2" LIQUID FILLED GAUGE**

- 2 1/2" diameter
- Stainless steel case
- Metal pointer
- Liquid filled
- Bronze bourdon tube
- Brass socket
- Glass window
- Restrictor
- 1/4" NPTM bottom mount

PART	DESCRIPTION
PG0060	60 PSI
PG0100	100 PSI
PG0160	160 PSI
PG0300	300 PSI
PG0600	600 PSI
PG1000	1000 PSI
PG2000	2000 PSI
PG3000	3000 PSI
PG5000	5000 PSI
PG10000	10000 PSI



**REAR MOUNT LIQUID GAUGE**

- 2 1/2" diameter
- Stainless steel case)
- Metal pointer
- Liquid filled
- Bronze bourdon tube
- Brass socket
- Glass window
- Restrictor
- 1/4" NPTM bottom mount

PART	DESCRIPTION
PG0060R	60 PSI
PG0160R	160 PSI



**4" DRY AMMONIA**

- 316 Stainless steel movement
- 316 Stainless steel bourdon tube
- White aluminum dial
- Acrylic window
- Enameled steel case
- Stainless steel 1/4" MPT connection
- Stainless steel wetted parts

PART	DESCRIPTION
PG4AM-060	60 PSI Dry Ammonia Gauge
PG4AM-160	160 PSI Dry Ammonia Gauge



**2 1/2" & 4" ALL STAINLESS LIQUID GAUGES**

Designed for use with any medium not corrosive to stainless steel. Liquid-filled for reduced shock and needle vibration.

- 304 stainless steel case
- 316 stainless steel Bourdon tube
- All wetted parts stainless steel
- 1/4" MPT 316 stainless steel mount
- White aluminum face
- Polycarbonate lens
- Single scale face plate in PSI only

PART	DESCRIPTION
PGSS0060	2 1/2" 60 PSI All Stainless
PGSS0100	2 1/2" 100 PSI All Stainless
PG4-060-SS	4" 60 PSI All Stainless
PG4-100-SS	4" 100 PSI All Stainless
PG4-160-SS	4" 160 PSI All Stainless

Other pressure ranges available by special order; please inquire.



**4" DRY GAUGE**

- Dual scale
- Steel black painted case
- Copper bourdon tube
- 1/4" MPT brass mount
- White aluminum face
- Acrylic lens

PART	DESCRIPTION
PG4DRY-60	4" 60 PSI Dry Gauge
PG4DRY-100	4" 100 PSI Dry Gauge
PG4DRY-160	4" 160 PSI Dry Gauge



**1/8" NYLON GAUGE TUBE UNION**

PART	DESCRIPTION
1182	1/8" X 1/8" Gauge Tube Union



**4" LIQUID GAUGE**

- 304 stainless steel case
- Bronze tube
- Brass stem and internals
- White enameled aluminum dial face
- Black enameled aluminum pointer
- Acrylic window
- Liquid filled
- Built-in restrictor

PART	DESCRIPTION
PG4-030	30 PSI Liquid Gauge 4"
PG4-060*	60 PSI Liquid Gauge 4"
PG4-100*	100 PSI Liquid Gauge 4"
PG4-160*	160 PSI Liquid Gauge 4"
PG4-200	200 PSI Liquid Gauge 4"
PG4-300	300 PSI Liquid Gauge 4"
PG4-400	400 PSI Liquid Gauge 4"
PG4-600	600 PSI Liquid Gauge 4"
PG4-1000	1000 PSI Liquid Gauge 4"
PG4-1500	1500 PSI Liquid Gauge 4"
PG4-2000	2000 PSI Liquid Gauge 4"
PG4-3000	3000 PSI Liquid Gauge 4"
PG4-5000	5000 PSI Liquid Gauge 4"
PG4-6000	6000 PSI Liquid Gauge 4"
PG4-10000	10000 PSI Liquid Gauge 4"

\* Denotes regular stocked item.



**PRESSURE GAUGE HOSE**

PART	DESCRIPTION
1/8TUBING	1/8"



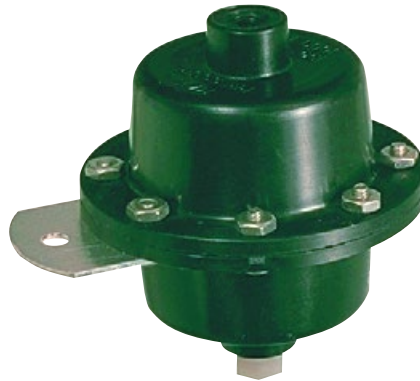
**ELECTRIC SPRAYER PRESSURE REGULATOR**

The Model 1560 and 1541 electric pressure regulators are equipped with a precision high torque motor and gear reduction, and high strength valve body for heavy-duty service. Chemical resistant glass-filled nylon body has stainless steel motor shaft and butterfly, and Viton seal. Low current draw, 50 MA at 12 volt. Maximum recommended pressure is 150 PSI. Speed at 12 volt = 1 RPM, at 6 volt = .5 RPM.

Model 1560: 3/4" NPT with 3/4" orifice and close-tolerance butterfly for use as either bypass regulator or throttling valve. Use for flow rates up to 50 GPM.

Model 1541: 1" NPT with 1" orifice. Use for flow rates from 15 to 100 GPM.

PART	DESCRIPTION
1560A	3/4" - Up to 50 GPM
1541A	1" - 15 to 100 GPM



**CHEMICAL ISOLATOR KIT**

Chemical isolator kit keeps chemicals from entering tractor or truck cab for added operator safety. Dampens and protects pressure gauge from corrosive chemicals. Large capacity assures accurate pressure reading. Maximum operating pressure, 150 PSI (1000 kPa). Pre-filled at the factory with non-toxic RV antifreeze.

2300 chemical isolator kit complete with mounting bracket and fittings for both 1/8" and 1/4" tubing. Packed in clam shell display package.

PART	DESCRIPTION
2300	Kit



**2200 SERIES SOLENOID VALVES**

Series 2200 12-Volt DC solenoid valves have 1/4" NPT female inlet and outlet. The valve housing is made of glass filled nylon and the wetted metal parts of 304 and 430 stainless steel. Viton seals and O-rings are standard. Coils are totally epoxy encapsulated with 1/4" male spade or Weather Pack sealed electrical connections. These direct operating valves can be used for foam and dye markers, small sprayers, boom end nozzles, chemical injection systems, individual nozzle shut-offs, etc.

PART	DESCRIPTION
2203A	1/4" NPT, 1/2 GPM, 175 PSI



**3-WAY SOLENOID VALVE**

The 2204 3-way 12-volt DC solenoid valve has a 1/4" female NPT inlet and two 1/4" female NPT outlets. The valve housing is made of glass-filled nylon and the wetted metal parts are made of 304 and 430 stainless steel. Viton seals and O-rings are standard. The weather resistant coil is totally epoxy-encapsulated.

Ideal for foam markers to control both air and liquid - 0.105 diameter orifice, 0.22 CV rating, 1/2 GPM (1.9 LPM), 40 PSI (275 kPa), 12-Volt DC, 0.85 amps.

PART	DESCRIPTION
2204A	3-Way Solenoid Valve



**2100C SERIES 12-VOLT ELECTRIC SHUT-OFF VALVE**

The 2100C boom shut-off valves feature a 3/4" FNPT inlet, 3/4" MNPT bypass outlet, and 1/2" FNPT boom outlet. The epoxy-encapsulated coil draws 2.0 amps at 12 volts. Wetted parts are made of 430 stainless steel and chemical resistant glass-filled nylon body. Equipped with Viton seat and seal. Can be "ganged" together by simply screwing one into another.

The 2100C Series valves operate at a maximum 125 PSI and 0 to 10 GPM (only 7 PSI drop @ 10 GPM).

PART	DESCRIPTION
2100C-1	Solenoid Shut-Off Valve, Single



**1999A SERIES ELECTRIC SHUT-OFF VALVE**

Series 1999A 12 volt DC electric boom shut-off valves have 1" NPT female inlet, 1" male bypass outlet, and 3/4" NPT female boom line outlet for high volume applications at minimum pressure loss (pressure drop is only 5 PSI at 15 GPM). Current draw of only 1.1 amp per valve. Chemical resistant glass-filled nylon body with Viton diaphragm and seals. Maximum operating pressure is 175 PSI. For multiple valve units, simply screw one valve to another.

PART	DESCRIPTION
1999A1	Solenoid Valve
1999A1-KIT	Repair Kit new style short plunger
1999A1-KIT-OLD	Repair Kit old style short plunger 1 1/4"