

Banjo Camlock/Manifold/Sweep Fittings



| PART | DESCRIPTION |
|--------|---------------------------------|
| 200B90 | 2" 90° Female Coupler x 2" MNPT |



| PART | DESCRIPTION |
|------|--------------------------------------|
| 201B | 2" Female Coupler x 2" Extended MNPT |



| PART | DESCRIPTION |
|------|--------------------------------------|
| 303B | 3" Female Coupler x 3" Extended MNPT |

Sweep Features:

- Direct Replacement for Standard 90° Flanged Couplings
- Easy ON/OFF Hose Connections
- Improved Flow for Maximum GPM
- Quick and Easy Assembly
- Positive Seals
- 360° Orientation



FLANGE X FLANGE SWEEP

| PART | DESCRIPTION |
|--------------|-----------------------------|
| M100SWP90 | 1" x 1" |
| M200SWP90 | 2" Std. x 2" Std. |
| M220200SWP90 | 2" Full Port x 2" Std. Port |
| M220SWP90 | 2" Full Port x 2" Full Port |
| M300SWP90 | 3" x 3" |
| M300220SWP90 | 3" x 2" Full Port |



FLANGE X MALE ADAPTER SWEEP

| PART | DESCRIPTION |
|------------|-------------------------|
| M220ASWP90 | 2" FP x 2" Male Adapter |
| M300ASWP90 | 3" x 3" Male Adapter |



FLANGE X MALE NPT SWEEP

| PART | DESCRIPTION |
|--------------|---------------------|
| M220MPTSWP90 | 2" FP x 2" Male NPT |
| M300MPTSWP90 | 3" x 3" Male NPT |



FULL PORT FLANGE X HOSE BARB W/ 1/4" GAUGE PORT

| PART | DESCRIPTION |
|--------------|--|
| M100BRBSWP90 | 1" FP x 1" Hose Shank w/ 1/4" Gauge Port |



FLANGE X FLANGE SWEEP WITH 1/4" GAUGE PORT

| PART | DESCRIPTION |
|------------|----------------------------------|
| M100SWPG90 | 1" x 1" w/ 1/4" Gauge Port |
| M220SWPG90 | 2" FP x 2" FP w/ 1/4" Gauge Port |
| M300SWPG90 | 3" x 3" w/ 1/4" Gauge Port |



FLANGE X HOSE SHANK SWEEP

| PART | DESCRIPTION |
|-----------------|------------------------|
| M100BRBSWP90 | 1" x 1" Hose Shank |
| M100125BRBSWP90 | 1" x 1 1/4" Hose Shank |
| M220BRBSWP90 | 2" FP x 2" Hose Shank |
| M300BRBSWP90 | 3" x 3" Hose Shank |



HOSE BARB SWEEP

- Male NPT x Hose Barb Elbow

| PART | DESCRIPTION |
|-----------|--------------------------|
| HB075SW90 | 3/4" NPT x 3/4" Barb |
| HB100SW90 | 1" NPT x 1" Barb |
| HB125SW90 | 1 1/4" NPT x 1 1/4" Barb |
| HB150SW90 | 1 1/2" NPT x 1 1/2" Barb |
| HB200SW90 | 2" NPT x 2" Barb |
| HB300SW90 | 3" NPT x 3" Barb |



90° MALE ADAPTER SWEEP

- Male NPT x Male Adapter Elbow
- Improves flow
- Reduced back pressure on pump seal

| PART | DESCRIPTION |
|----------|-------------------------------|
| 200FSW90 | 2" Male Adapter x 2" Male NPT |
| 300FSW90 | 3" Male Adapter x 3" Male NPT |



Features

- Positive Seals
- Quick & Easy Assembly
- Easy On/Off Hose Connections
- 360° Orientation
- 1" & 2" fittings pressure to 150 P.S.I. at 70 Degree
- 3" fittings pressure to 125 P.S.I. at 70 Degree



FLANGED COUPLINGS

| PART | DESCRIPTION |
|---------|---------------------------------------|
| M100CPG | 1" x 1" Flange Coupling |
| M200CPG | 2" x 2" Standard Port Flange Coupling |
| M220CPG | 2" x 2" Full Port Flange Coupling |
| M300CPG | 3" x 3" Full Port Flange Coupler |



90° FLANGED COUPLINGS

| PART | DESCRIPTION |
|-------------|--------------------------------------|
| M100CPG90 | 1" x 1" 90° |
| M200CPG90 | 2" x 2" 90° |
| M200CPG90SH | 2" x 2" Full Standard Port 90° Short |
| M220CPG90 | 2" x 2" Full Port Flange 90° |
| M300CPG90 | 3" Flange x 3" Flange 90 Degree |



45° FLANGED COUPLINGS

| PART | DESCRIPTION |
|-----------|------------------------------|
| M100CPG45 | 1" x 1" 45° Degree |
| M200CPG45 | 2" x 2" Standard Port 45° |
| M220CPG45 | 2" x 2" Full Port Flange 45° |
| M300CPG45 | 3" x 3" Flange 45° |



FLANGED REDUCER COUPLINGS

| PART | DESCRIPTION |
|------------|-----------------------------------|
| M200100CPG | 2" x 1" Flange Reducing Coupling |
| M220100CPG | 2" Full Port x 1" Reducing Flange |
| M220200CPG | 2" Full Port x 2" Reducing Flange |
| M300200CPG | 3" x 2" Reducing Flange |
| M300220CPG | 3" x 2" Full Port Reducing Flange |



FLANGED TEE

| PART | DESCRIPTION |
|-------------|------------------------------------|
| M100TEE | 1" Flanged Tee |
| M200100TEE | 2" x 1" Flanged Tee |
| M200TEE | 2" Flanged Tee |
| M200100TEEB | 2" x 1" Standard Port w/Bracket |
| M220100TEE | 2" Full Port x 2" x 1" Flanged Tee |
| M220TEE | 2" Full Port Flanged Tee |
| M300TEE | 3" Flanged Tee |



FLANGED 3" FULL PORT CHECK VALVE

- 150 PSI Maximum; 1 – 2 PSI spring
- 316 Stainless Steel spring; EPDM gasket
- One piece glass-reinforced Polypropylene construction

| PART | DESCRIPTION |
|--------|---------------------------------------|
| MCV301 | 3" Full Port Flanged Poly Check Valve |

Other sizes of Flanged Check Valves available – Please Inquire.



FLANGED Y COUPLINGS

| PART | DESCRIPTION |
|----------|--|
| M220Y45 | 2" FP X 2" FP x 2" FP Flanged 45° |
| M220YG45 | 2" FP X 2" FP x 2" FP Flanged 45° with 1/4" gauge port |



FLANGE X FEMALE NPT THREAD

| PART | DESCRIPTION |
|------------|--------------------------------------|
| M100050FPT | 1" Flange x 1/2" FPT Adapter |
| M100075FPT | 1" Flange x 3/4" FPT Adapter |
| M100FPT | 1" Flange x 1" FPT Adapter |
| M200FPT | 2" Flange x 2" FPT Adapter |
| M220FPT | 2" Full Port Flange x 2" FPT Adapter |
| M300FPT | 3" Flange x 3" FPT Adapter |



FLANGE X NPT THREAD POLY

| PART | DESCRIPTION |
|------------|---------------------------|
| M100075MPT | 1" Flange x 3/4" MPT |
| M100MPT | 1" Flange x 1" MPT |
| M100125MPT | 1" Flange x 1 1/4" MPT |
| M200125MPT | 2" Flange x 1 1/4" MPT |
| M200150MPT | 2" Flange x 1 1/2" MPT |
| M200MPT | 2" Flange x 2" MPT |
| M220MPT | 2" Flange x 2" MPT Thread |
| M300MPT | 3" Flange x 3" MPT |



FLANGE PLUGS (solid & w/gauge port)

| PART | DESCRIPTION |
|------------|-------------------------------------|
| M100PLG | 1" Flange Plug |
| M200PLG | 2" Flange Plug |
| M220PLG | 2" Full Port Flange Plug |
| M300PLG | 3" Flange Plug |
| M100PLG025 | 1" Flange x 1/4" FPT |
| M200PLG025 | 2" Std Port Flange Plug x 1/4" FPT |
| M200PLG038 | 2" Std Port Flange Plug x 3/8" FPT |
| M200PLG050 | 2" Flange Plug x 1/2" FPT |
| M200PLG075 | 2" Std Port Flange Plug x 3/4" FPT |
| M200PLG100 | 2" Flange Plug x 1" FPT |
| M220PLG075 | 2" Full Port Flange Plug x 3/4" FPT |
| M300PLG075 | 3" Flange Plug x 3/4" FPT |
| M300PLG100 | 3" Flange Plug x 1" FPT |



FLANGED CROSS

| PART | DESCRIPTION |
|--------|----------------------------|
| M100CR | 1" Flanged Cross |
| M200CR | 2" Flanged Cross |
| M220CR | 2" Full Port Flanged Cross |
| M300CR | 3" Full Port Flanged Cross |



FLANGE X MALE QDC

| PART | DESCRIPTION |
|-------|---|
| M100A | 1" Flange x 1" Male Camlock |
| M200A | 2" Standard Port Flange x 2" Male Camlock |
| M220A | 2" Full Port Flange x 2" Male Camlock |
| M300A | 3" Flange x 3" Male Camlock |



FLANGE X HOSE BARB

| PART | DESCRIPTION |
|------------|--|
| M100075BRB | 1" Flange x 3/4" Hose Barb |
| M100BRB | 1" Flange x 1" Hose Barb |
| M100125BRB | 1" Flange x 1 1/4" Hose Barb |
| M200100BRB | 2" Flange x 1" Hose Barb |
| M200125BRB | 2" Flange x 1 1/4" Hose Barb |
| M200150BRB | 2" Flange x 1 1/2" Hose Barb |
| M200BRB | 2" Flange x 2" Hose Barb |
| M220150BRB | 2" Full Port Flange x 1 1/2" Hose Barb |
| M220BRB | 2" Full Port Flange x 2" Hose Barb |
| M300220BRB | 3" Flange x 2" Hose Barb |
| M300BRB | 3" Flange x 3" Hose Barb |



FLANGE X HOSE BARB WITH 90° ELBOW

| PART | DESCRIPTION |
|--------------|---------------------------------------|
| M100075BRB90 | 1" Flange x 3/4" Barb 90° |
| M100BRB90 | 1" Flange x 1" Barb 90° |
| M100125BRB90 | 1" Flange x 1 1/4" Barb 90° |
| M200100BRB90 | 2" Flange x 1" Barb 90° |
| M200125BRB90 | 2" Flange x 1 1/4" Barb 90° |
| M200150BRB90 | 2" Flange x 1 1/2" Barb 90° |
| M200BRB90 | 2" Flange x 2" Barb 90° |
| M220150BRB90 | 2" Full Port Flange x 1 1/2" Barb 90° |
| M220BRB90 | 2" Full Port Flange x 2" Barb 90° |
| M300220BRB90 | 3" Flange x 2" Barb 90° |
| M300BRB90 | 3" Flange x 3" Barb 90° |

FLANGE X MALE NPT THREAD - 316 SS



| PART | DESCRIPTION |
|--------------|--------------------------------------|
| M100MPTSS | 1" Flange x 1" MPT |
| M200125MPTSS | 2" Standard Port Flange x 1 1/4" MPT |
| M200150MPTSS | 2" Standard Port Flange x 1 1/2" MPT |
| M200MPTSS | 2" Standard Port Flange x 2" MPT |
| M220150MPTSS | 2" Full Port Flange x 1 1/2" MPT |
| M220MPTSS | 2" Full Port Flange x 2" MPT |
| M300MPTSS | 3" Flange x 3" MPT |

FLANGE X SOCKET WELD - 316 SS



| PART | DESCRIPTION |
|-----------|--------------------------------------|
| M100SWFSS | 1" Flange x 1" Socket Weld |
| M200SWFSS | 2" Std Port Flange x 2" Socket Weld |
| M220SWFSS | 2" Full Port Flange x 2" Socket Weld |
| M300SWFSS | 3" Flange x 3" Socket Weld |



Worm Gear Clamp Flange Gasket Flange Gasket w/ Rib Skirted Flange Gasket

FLANGE CLAMPS & GASKETS FOR BANJO MANIFOLD FITTINGS

FLANGE CLAMPS

Available in 1", 2", and 3" with different Torque Ratings (IN/LBS); Stainless Steel Construction

| PART | DESCRIPTION |
|---------|--|
| FC100 | 100 Series Worm Gear Clamp – 50-60 IN/LBS |
| FC200 | 200 Series Worm Gear Clamp – Standard Port – 90-100 IN/LBS |
| FC220 | 220 Series Worm Gear Clamp – Full Port – 90-100 IN/LBS |
| FC300 | 300 Series Worm Gear Clamp – 90-100 IN/LBS |
| FC220TB | 2" Full Port Hi-Torque T-Bolt Flange Clamp – 100 IN/LBS |
| FC300TB | 3" Full Port Hi-Torque T-Bolt Flange Clamp – 100 IN/LBS |
| FC220B | 2" Full Port Bolted Flange Clamp – 150 IN/LBS |
| FC300B | 3" Full Port Bolted Flange Clamp – 150 IN/LBS |

FLANGE GASKETS

Available in 1", 2" Std. Port, 2" Full Port, and 3" in either EPDM or Viton (FKM)

| PART | DESCRIPTION |
|--------|--|
| M100G | 100 Series Flange Gasket – EPDM |
| M100GV | 100 Series Flange Gasket – Viton |
| 150G | 200 Series Standard Port Flange Gasket – EPDM |
| 150GV | 200 Series Standard Port Flange Gasket – Viton |
| 200G | Order Part # G2 (220 Series Full Port Flange Gasket – EPDM) |
| 200GV | 220 Series Full Port Flange Gasket – EPDM |
| 300G | Order Part # G3 (300 Series Flange Gasket – EPDM) |
| 300GV | 300 Series Flange Gasket – Viton |

FLANGE GASKETS WITH RIB

Rib on gasket keeps gasket in place during assembly of manifold fittings

| PART | DESCRIPTION |
|-------|--|
| M101G | 100 Series Flange Gasket w/ Rib – EPDM |
| M201G | 200 Series Flange Gasket w/ Rib – EPDM |
| M221G | 220 Series Full Port Flange Gasket w/ Rib – EPDM |
| M301G | 300 Series Flange Gasket w/ Rib – EPDM |

SKIRTED FLANGE GASKETS

Skirted flange gasket aligns with manifold flange for positive and secure fit

| PART | DESCRIPTION |
|-------|--|
| M102G | 1" & 1 1/4" Skirted Flange Gasket - EPDM |
| M202G | 1 1/2" Skirted Flange Gasket - EPDM |
| M222G | 2" Skirted Flange Gasket - EPDM |
| M302G | 3" Skirted Flange Gasket - EPDM |



Features:

- Glass Reinforced Polypropylene.
- Heavy duty (Schedule 80).
- Lightweight with excellent strength.
- NPT threads.
- Excellent chemical resistance.
- Pressure to 150 PSI at 70°F.

POLY NIPPLES

| PART | DESCRIPTION |
|-----------|--------------------------|
| NIP025-SH | Poly Nipple 1/4" Short |
| NIP038-SH | Poly Nipple 3/8" Short |
| NIP050-SH | Poly Nipple 1/2" Short |
| NIP050-3 | Poly Nipple 1/2" x 3" |
| NIP075-SH | Poly Nipple 3/4" Short |
| NIP075-4 | Poly Nipple 3/4" x 4" |
| NIP075-6 | Poly Nipple 3/4" x 6" |
| NIP100-SH | Poly Nipple 1" Short |
| NIP100-4 | Poly Nipple 1" x 4" |
| NIP100-6 | Poly Nipple 1" x 6" |
| NIP125-SH | Poly Nipple 1 1/4" Short |
| NIP125-4 | Poly Nipple 1 1/4" x 4" |
| NIP125-6 | Poly Nipple 1 1/4" x 6" |
| NIP150-SH | Poly Nipple 1 1/2" Short |
| NIP150-3 | Poly Nipple 1 1/2" x 3" |
| NIP150-4 | Poly Nipple 1 1/2" x 4" |
| NIP150-5 | Poly Nipple 1 1/2" x 5" |
| NIP150-6 | Poly Nipple 1 1/2" x 6" |
| NIP200-SH | Poly Nipple 2" Short |
| NIP200-4 | Poly Nipple 2" x 4" |
| NIP200-6 | Poly Nipple 2" x 6" |
| NIP300-SH | Poly Nipple 3" Short |
| NIP300-4 | Poly Nipple 3" x 4" |
| NIP300-6 | Poly Nipple 3" x 6" |



Pipe Nipple

POLY REDUCING NIPPLES

| PART | DESCRIPTION |
|-----------|-------------------------------------|
| RN050-038 | Poly Reducer Nipple 1/2" x 3/8" |
| RN075-050 | Poly Reducer Nipple 3/4" x 1/2" |
| RN100-050 | Poly Reducer Nipple 1" x 1/2" |
| RN100-075 | Poly Reducer Nipple 1" x 3/4" |
| RN125-075 | Poly Reducer Nipple 1 1/4" x 3/4" |
| RN125-100 | Poly Reducer Nipple 1 1/4" x 1" |
| RN150-100 | Poly Reducer Nipple 1 1/2" x 1" |
| RN150-125 | Poly Reducer Nipple 1 1/2" x 1 1/4" |
| RN200-125 | Poly Reducer Nipple 2" x 1 1/4" |
| RN200-150 | Poly Reducer Nipple 2" x 1 1/2" |
| RN300-200 | Poly Reducer Nipple 3" x 2" |



Reducing Nipple



Pipe Coupling



Pipe Cap



Reducing Coupling



Pipe Plug

POLY PIPE COUPLINGS

| PART | DESCRIPTION |
|---------|-----------------------------------|
| CPLG025 | Poly Threaded Pipe Coupler 1/4" |
| CPLG038 | Poly Threaded Pipe Coupler 3/8" |
| CPLG050 | Poly Threaded Pipe Coupler 1/2" |
| CPLG075 | Poly Threaded Pipe Coupler 3/4" |
| CPLG100 | Poly Threaded Pipe Coupler 1" |
| CPLG125 | Poly Threaded Pipe Coupler 1 1/4" |
| CPLG150 | Poly Threaded Pipe Coupler 1 1/2" |
| CPLG200 | Poly Threaded Pipe Coupler 2" |
| CPLG300 | Poly Threaded Pipe Coupler 3" |

POLY PIPE CAPS

| PART | DESCRIPTION |
|--------|--------------------------|
| CAP025 | Poly Threaded Cap 1/4" |
| CAP038 | Poly Threaded Cap 3/8" |
| CAP050 | Poly Threaded Cap 1/2" |
| CAP075 | Poly Threaded Cap 3/4" |
| CAP100 | Poly Threaded Cap 1" |
| CAP125 | Poly Threaded Cap 1 1/4" |
| CAP150 | Poly Threaded Cap 1 1/2" |
| CAP200 | Poly Threaded Cap 2" |
| CAP300 | Poly Threaded Cap 3" |

POLY REDUCING COUPLINGS

| PART | DESCRIPTION |
|-----------|---------------------------------------|
| RC100-075 | Poly Reducer Coupling 1" x 3/4" |
| RC150-100 | Poly Reducer Coupling 1 1/2" x 1" |
| RC150-125 | Poly Reducer Coupling 1 1/2" x 1 1/4" |
| RC200-050 | Poly Reducer Coupling 2" x 1/2" |
| RC200-100 | Poly Reducer Coupling 2" x 1" |
| RC200-125 | Poly Reducer Coupling 2" x 1 1/4" |
| RC200-150 | Poly Reducer Nipple 2" x 1 1/2" |
| RC300-200 | Poly Reducer Nipple 3" x 2" |

POLY PIPE PLUGS

| PART | DESCRIPTION |
|---------|-----------------------|
| PLUG025 | Poly Pipe Plug 1/4" |
| PLUG038 | Poly Pipe Plug 3/8" |
| PLUG050 | Poly Pipe Plug 1/2" |
| PLUG075 | Poly Pipe Plug 3/4" |
| PLUG100 | Poly Pipe Plug 1" |
| PLUG125 | Poly Pipe Plug 1 1/4" |
| PLUG150 | Poly Pipe Plug 1 1/2" |
| PLUG200 | Poly Pipe Plug 2" |
| PLUG300 | Poly Pipe Plug 3" |



Reducer Bushing

POLY REDUCING BUSHING

| PART | DESCRIPTION |
|-----------|--------------------------------------|
| RB038-025 | Poly Reducer Bushing 3/8" x 1/4" |
| RB050-025 | Poly Reducer Bushing 1/2" x 1/4" |
| RB050-038 | Poly Reducer Bushing 1/2" x 3/8" |
| RB075-018 | Poly Reducer Bushing 3/4" x 1/8" |
| RB075-025 | Poly Reducer Bushing 3/4" x 1/4" |
| RB075-038 | Poly Reducer Bushing 3/4" x 3/8" |
| RB075-050 | Poly Reducer Bushing 3/4" x 1/2" |
| RB100-018 | Poly Reducer Bushing 1" x 1/8" |
| RB100-025 | Poly Reducer Bushing 1" x 1/4" |
| RB100-050 | Poly Reducer Bushing 1" x 1/2" |
| RB100-075 | Poly Reducer Bushing 1" x 3/4" |
| RB125-038 | Poly Reducer Bushing 1 1/4" x 3/8" |
| RB125-075 | Poly Reducer Bushing 1 1/4" x 3/4" |
| RB125-100 | Poly Reducer Bushing 1 1/4" x 1" |
| RB150-075 | Poly Reducer Bushing 1 1/2" x 3/4" |
| RB150-100 | Poly Reducer Bushing 1 1/2" x 1" |
| RB150-125 | Poly Reducer Bushing 1 1/2" x 1 1/4" |
| RB200-075 | Poly Reducer Bushing 2" x 3/4" |
| RB200-100 | Poly Reducer Bushing 2" x 1" |
| RB200-125 | Poly Reducer Bushing 2" x 1 1/4" |
| RB200-150 | Poly Reducer Bushing 2" x 1 1/2" |
| RB300-150 | Poly Reducer Bushing 3" x 1 1/2" |
| RB300-200 | Poly Reducer Bushing 3" x 2" |
| RB400-300 | Poly Reducer Bushing 4" x 3" |



Pipe Elbow 90°

POLY ELBOWS 90°

| PART | DESCRIPTION |
|----------|------------------------|
| EL025-90 | Poly Pipe Elbow 1/4" |
| EL038-90 | Poly Pipe Elbow 3/8" |
| EL050-90 | Poly Pipe Elbow 1/2" |
| EL075-90 | Poly Pipe Elbow 3/4" |
| EL100-90 | Poly Pipe Elbow 1" |
| EL125-90 | Poly Pipe Elbow 1 1/4" |
| EL150-90 | Poly Pipe Elbow 1 1/2" |
| EL200-90 | Poly Pipe Elbow 2" |
| EL300-90 | Poly Pipe Elbow 3" |



Street Elbow 90°

POLY STREET ELBOWS 90°

| PART | DESCRIPTION |
|----------|--------------------------|
| SL025-90 | Poly Street Elbow 1/4" |
| SL038-90 | Poly Street Elbow 3/8" |
| SL050-90 | Poly Street Elbow 1/2" |
| SL075-90 | Poly Street Elbow 3/4" |
| SL100-90 | Poly Street Elbow 1" |
| SL125-90 | Poly Street Elbow 1 1/4" |
| SL150-90 | Poly Street Elbow 1 1/2" |
| SL200-90 | Poly Street Elbow 2" |
| SL300-90 | Poly Street Elbow 3" |



Cross

POLY CROSSES

| PART | DESCRIPTION |
|-------|-------------------|
| CR025 | Poly Cross 1/4" |
| CR050 | Poly Cross 1/2" |
| CR075 | Poly Cross 3/4" |
| CR100 | Poly Cross 1" |
| CR125 | Poly Cross 1 1/4" |
| CR150 | Poly Cross 1 1/2" |
| CR200 | Poly Cross 2" |



Street Elbow 45°

POLY STREET ELBOWS 45°

| PART | DESCRIPTION |
|----------|-------------------------------|
| SL075-45 | 45 Degree Street Elbow 3/4" |
| SL100-45 | 45 Degree Street Elbow 1" |
| SL125-45 | 45 Degree Street Elbow 1 1/4" |
| SL150-45 | 45 Degree Street Elbow 1 1/2" |
| SL200-45 | 45 Degree Street Elbow 2" |
| SL300-45 | 45 Degree Street Elbow 3" |



Pipe Tee

POLY PIPE TEE

| PART | DESCRIPTION |
|--------|--------------------------|
| TEE025 | Poly Threaded Tee 1/4" |
| TEE038 | Poly Threaded Tee 3/8" |
| TEE050 | Poly Threaded Tee 1/2" |
| TEE075 | Poly Threaded Tee 3/4" |
| TEE100 | Poly Threaded Tee 1" |
| TEE125 | Poly Threaded Tee 1 1/4" |
| TEE150 | Poly Threaded Tee 1 1/2" |
| TEE200 | Poly Threaded Tee 2" |
| TEE300 | Poly Threaded Tee 3" |



Elbow 45°

POLY ELBOW 45°

| PART | DESCRIPTION |
|----------|-------------------------|
| EL100-45 | 45 Degree Poly Elbow 1" |



Gauge not included

POLY PIPE GAUGE TEES

| PART | DESCRIPTION |
|--------|---------------------------------------|
| TEG075 | 3/4" FNPT Gauge Tee (1/4" gauge port) |
| TEG100 | 1" FNPT Gauge Tee (1/4" gauge port) |



POLY ELBOW 90°

| PART | DESCRIPTION |
|------------|---------------------|
| HBEL100-90 | 1" HB X 1" HB Elbow |



POLY STRAIGHT HOSE BARBS

| PART | DESCRIPTION |
|-----------|---------------------------------------|
| HB025 | Poly Straight Adapter 1/4" x 1/4" |
| HB025-038 | Poly Straight Adapter 1/4" x 3/8" |
| HB025-050 | Poly Straight Adapter 1/4" x 1/2" |
| HB038 | Poly Straight Adapter 3/8" x 3/8" |
| HB038-050 | Poly Straight Adapter 3/8" x 1/2" |
| HB050 | Poly Straight Adapter 1/2" x 1/2" |
| HB050-038 | Poly Straight Adapter 1/2" x 3/8" |
| HB050-075 | Poly Straight Adapter 1/2" x 3/4" |
| HB075 | Poly Straight Adapter 3/4" x 3/4" |
| HB075-038 | Poly Straight Adapter 3/4" x 3/8" |
| HB075-050 | Poly Straight Adapter 3/4" x 1/2" |
| HB075-058 | Poly Straight Adapter 3/4" x 5/8" |
| HB075-100 | Poly Straight Adapter 3/4" x 1" |
| HB100 | Poly Straight Adapter 1" x 1" |
| HB100-075 | Poly Straight Adapter 1" x 3/4" |
| HB100-125 | Poly Straight Adapter 1" x 1 1/4" |
| HB125 | Poly Straight Adapter 1 1/4" x 1 1/4" |
| HB125-075 | Poly Straight Adapter 1 1/4" x 3/4" |
| HB125-100 | Poly Straight Adapter 1 1/4" x 1" |
| HB125-150 | Poly Straight Adapter 1 1/4" x 1 1/2" |
| HB150 | Poly Straight Adapter 1 1/2" x 1 1/2" |
| HB150-100 | Poly Straight Adapter 1 1/2" x 1" |
| HB150-125 | Poly Straight Adapter 1 1/2" x 1 1/4" |
| HB150-200 | Poly Straight Adapter 1 1/2" x 2" |
| HB200 | Poly Straight Adapter 2" x 2" |
| HB200-150 | Poly Straight Adapter 2" x 1 1/2" |
| HB300 | Poly Straight Adapter 3" x 3" |
| HB400 | Poly Straight Adapter 4" x 4" |



FEMALE HOSE BARB

| PART | DESCRIPTION |
|------------|-------------------------------------|
| HBF075 | Female Straight Adapter 3/4" x 3/4" |
| HBF075-100 | Female Straight Adapter 3/4" x 1" |
| HBF100 | Female Straight Adapter 1" x 1" |



POLY HOSE BARB TEES

| PART | DESCRIPTION |
|------------|----------------------------------|
| HBT050-038 | Hose Barb Tee 1/2" x 1/2" x 3/8" |
| HBT050 | Hose Barb Tee 1/2" x 1/2" x 1/2" |
| HBT050-075 | Hose Barb Tee 1/2" x 1/2" x 3/4" |
| HBT075 | Hose Barb Tee 3/4" x 3/4" x 3/4" |
| HBT075-050 | Hose Barb Tee 3/4" x 3/4" x 1/2" |
| HBT075-100 | Hose Barb Tee 3/4" x 3/4" x 1" |
| HBT100 | Hose Barb Tee 1" x 1" x 1" |
| HBT100-075 | Hose Barb Tee 1" x 1" x 3/4" |



POLY HOSE BARB THREADED TEES

| PART | DESCRIPTION |
|------------|---|
| HBT100-100 | Tee Adapter 1" NPT x 1" x 1" Hose |
| HBT150-100 | Tee Adapter 1 1/2" NPT x 1" x 1" Hose |
| HBT150-150 | Tee Adapter 1 1/2" NPT x 1 1/2" x 1 1/2" Hose |



POLY 90° HOSE BARBS

| PART | DESCRIPTION |
|--------------|-------------------------------------|
| HB025-90 | Poly NPT x HB Elbow 1/4" x 1/4" |
| HB025-038-90 | Poly NPT x HB Elbow 1/4" x 3/8" |
| HB025-050-90 | Poly NPT x HB Elbow 1/4" x 1/2" |
| HB038-90 | Poly NPT x HB Elbow 3/8" x 3/8" |
| HB050-038-90 | Poly NPT x HB Elbow 1/2" x 3/8" |
| HB050-90 | Poly NPT x HB Elbow 1/2" x 1/2" |
| HB050-075-90 | Poly NPT x HB Elbow 1/2" x 3/4" |
| HB075-050-90 | Poly NPT x HB Elbow 3/4" x 1/2" |
| HB075-90 | Poly NPT x HB Elbow 3/4" x 3/4" |
| HB075-100-90 | Poly NPT x HB Elbow 3/4" x 1" |
| HB100-125-90 | Poly NPT x HB Elbow 1" x 1 1/4" |
| HB100-90 | Poly NPT x HB Elbow 1" x 1" |
| HB100-075-90 | Poly NPT x HB Elbow 1" x 3/4" |
| HB125-100-90 | Poly NPT x HB Elbow 1 1/4" x 1" |
| HB125-150-90 | Poly NPT x HB Elbow 1 1/4" x 1 1/2" |
| HB125-90 | Poly NPT x HB Elbow 1 1/4" x 1 1/4" |
| HB150-125-90 | Poly NPT x HB Elbow 1 1/2" x 1 1/4" |
| HB150-90 | Poly NPT x HB Elbow 1 1/2" x 1 1/2" |
| HB200-150-90 | Poly NPT x HB Elbow 2" x 1 1/2" |
| HB200-90 | Poly NPT x HB Elbow 2" x 2" |
| HB300-90 | Poly NPT x HB Elbow 3" x 3" |



POLY HOSE MENDERS

| PART | DESCRIPTION |
|-------|-------------------------|
| HM025 | Poly Hose Mender 1/4" |
| HM038 | Poly Hose Mender 3/8" |
| HM050 | Poly Hose Mender 1/2" |
| HM075 | Poly Hose Mender 3/4" |
| HM100 | Poly Hose Mender 1" |
| HM125 | Poly Hose Mender 1 1/4" |
| HM150 | Poly Hose Mender 1 1/2" |
| HM200 | Poly Hose Mender 2" |
| HM300 | Poly Hose Mender 3" |



316 STAINLESS STEEL HOSE BARBS

| PART | DESCRIPTION |
|-------------|------------------------------|
| HB025-038SS | SS Hose Barb 1/4" x 3/8" |
| HB025-050SS | SS Hose Barb 1/4" x 1/2" |
| HB025SS | SS Hose Barb 1/4" x 1/4" |
| HB038-050SS | SS Hose Barb 3/8" x 1/2" |
| HB038SS | SS Hose Barb 3/8" x 3/8" |
| HB050-058SS | SS Hose Barb 1/2" x 3/8" |
| HB050-075SS | SS Hose Barb 1/2" x 3/4" |
| HB050SS | SS Hose Barb 1/2" x 1/2" |
| HB075-050SS | SS Hose Barb 3/4" x 1/2" |
| HB075-100SS | SS Hose Barb 3/4" x 1" |
| HB075SS | SS Hose Barb 3/4" x 3/4" |
| HB100-075SS | SS Hose Barb 1" x 3/4" |
| HB100SS | SS Hose Barb 1" x 1" |
| HB125SS | SS Hose Barb 1 1/4" x 1 1/4" |
| HB150SS | SS Hose Barb 1 1/2" x 1 1/2" |
| HB200SS | SS Hose Barb 2" x 2" |
| HB300SS | SS Hose Barb 3" x 3" |



MINI PIPE FITTINGS

- Heavy duty glass reinforced polypropylene (Schedule 80)
- Lightweight with excellent strength
- Excellent chemical resistance
- 1/4" to 3/8" sizes available
- NPT Threads
- Pressure rated to 150 PSI @ 70°F



| PART | DESCRIPTION |
|--------|------------------------|
| CAP025 | 1/4" FNPT Threaded Cap |
| CAP038 | 3/8" FNPT Thread Cap |



| PART | DESCRIPTION |
|---------|-------------------------|
| CPLG025 | 1/4" FNPT Poly Coupling |



| PART | DESCRIPTION |
|-------|-----------------|
| CR025 | 1/4" FNPT Cross |



| PART | DESCRIPTION |
|----------|------------------------|
| EL025-90 | 1/4" Elbow FNPT x FNPT |



| PART | DESCRIPTION |
|--------|--------------------|
| HBT025 | 1/4" Hose Barb Tee |
| HBT038 | 3/8" Hose Barb Tee |



| PART | DESCRIPTION |
|-------|------------------------|
| HMO25 | 1/4" Hose Mender – WQL |
| HMO38 | 3/8" Hose Mender |



| PART | DESCRIPTION |
|---------|---------------------|
| PLUG025 | 1/4" Pipe Plug MNPT |
| PLUG038 | 3/8" Pipe Plug MNPT |



| PART | DESCRIPTION |
|----------|-----------------------|
| SL025-90 | 1/4" NPT Street Elbow |



| PART | DESCRIPTION |
|--------|-------------------------|
| TEE025 | 1/4" FNPT Poly Pipe Tee |
| TEE038 | 3/8" FNPT Poly Pipe Tee |

POLY MICRO VALVES

- Full Port design with 90° rotating handle
- Precision molded glass-filled poly for added strength
- Standard FKM (Viton-type) seats and O-rings
- Maximum operating pressure 300 PSI

Also available in John Guest® Push Lock connections. Please call for info.



| PART | DESCRIPTION |
|-------------|-----------------------------|
| LV025MTV | 1/4" FNPT x 1/4" MNPT Valve |
| LV038MTV | 3/8" FNPT x 3/8" MNPT Valve |
| LV050MTV | 1/2" FNPT x 1/2" MNPT Valve |
| LV038050MTV | 3/8" FNPT x 1/2" MNPT Valve |
| LV050100MTV | 1/2" FNPT x 1" MNPT Valve |



| PART | DESCRIPTION |
|--------|-----------------------------|
| LV025V | 1/4" FNPT x 1/4" FNPT Valve |
| LV038V | 3/8" FNPT x 3/8" FNPT Valve |
| LV050V | 1/2" FNPT x 1/2" FNPT Valve |



| PART | DESCRIPTION |
|----------|----------------------|
| LVHB025V | 1/4" Hose Barb Valve |
| LVHB038V | 3/8" Hose Barb Valve |
| LVHB050V | 1/2" Hose Barb Valve |
| LVHB075V | 3/4" Hose Barb Valve |



| PART | DESCRIPTION |
|----------|---------------------------|
| LV050SLV | 1/2" FNPT Side Load Valve |



| PART | DESCRIPTION |
|---------------|---------------------------|
| LVHB038050MTV | 3/8" HB x 1/2" MNPT Valve |
| LVHB075MTV | 3/4" HB x 3/4" MNPT Valve |
| LVHB075100MTV | 3/4" HB x 1" MNPT Valve |



BARREL HARDWARE CLAMPS

- Perfect for tight, hard to reach places
- Minimizes protruding parts by tightening together versus tightening away from
- Deep socket tools not required
- 300 Stainless Steel construction

| PART | DESCRIPTION |
|-------|----------------------------------|
| BC090 | 3/4" Barrel Clamp – .91" to .98" |



NIPPLES

| PART | SIZE |
|---------|-----------|
| M1800 | 1/8 |
| M1400 | 1/4 |
| M3800 | 3/8 |
| M3814 | 3/8 x 1/4 |
| M1200 | 1/2 |
| M1214 | 1/2 x 1/4 |
| M1238 | 1/2 x 3/8 |
| M3400 | 3/4 |
| M3438 | 3/4 x 3/8 |
| M3412 | 3/4 x 1/2 |
| M1000 | 1 |
| M1140 | 1 1/4 |
| M114100 | 1 1/4 x 1 |
| M1120 | 1 1/2 |
| M2000 | 2 |
| M2000-6 | 2 x 6 |
| M3000 | 3 |
| M3000-6 | 3 x 6 |
| M4000 | 4 |



THREADED TEES

| PART | SIZE |
|-------|-------|
| TT14 | 1/4 |
| TT12 | 1/2 |
| TT34 | 3/4 |
| TT100 | 1 |
| TT114 | 1 1/4 |
| TT112 | 1 1/2 |
| TT200 | 2 |
| TT300 | 3 |



45° STREET ELBOWS

| PART | SIZE |
|----------|-------|
| SE34-45 | 3/4 |
| SE100-45 | 1 |
| SE114-45 | 1 1/4 |
| SE112-45 | 1 1/2 |
| SE200-45 | 2 |



SWIVEL NUTS

- Use with Hose Barbs & Vinyl Washer

| PART | DESCRIPTION |
|----------|-------------|
| HCNUTGH | GH |
| HCNUTNPS | NPS |



CAPS

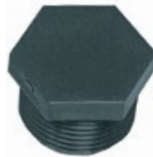
- Requires Vinyl Washer

| PART | DESCRIPTION |
|--------|-------------|
| CAPGH | GH |
| CAPNPS | NPS |



GAUGE TEES

| PART | SIZE |
|---------|-----------------|
| TT12G18 | 1/2 x 1/8 Gauge |
| TT12G14 | 1/2 x 1/4 Gauge |
| TT34G18 | 3/4 x 1/8 Gauge |
| TT34G14 | 3/4 x 1/4 Gauge |



PIPE PLUGS

| PART | SIZE |
|-------|-------|
| F1800 | 1/8 |
| F1400 | 1/4 |
| F3800 | 3/8 |
| F1200 | 1/2 |
| F3400 | 3/4 |
| F1000 | 1 |
| F1140 | 1 1/4 |
| F1120 | 1 1/2 |
| F2000 | 2 |



HOSE BARBS

- Use with Swivel Nut (HCNUTGH) and Vinyl Washer



MALE GH X 90° ADAPTERS

| PART | SIZE |
|--------|------|
| ELMH38 | 3/8 |
| ELMH12 | 1/2 |
| ELMH58 | 5/8 |
| ELMH34 | 3/4 |
| ELMH10 | 1 |



COUPLERS

| PART | SIZE |
|--------|----------------|
| FC1200 | 1/2 |
| FC3400 | 3/4 |
| FC1000 | 1 |
| FC1140 | 1 1/4 |
| FC1120 | 1 1/2 |
| FC2000 | 2 |
| #03PP | 1/2" FPT x FGH |



STREET ELBOWS

| PART | SIZE |
|-------|-------|
| SE14 | 1/4 |
| SE12 | 1/2 |
| SE34 | 3/4 |
| SE100 | 1 |
| SE114 | 1 1/4 |
| SE112 | 1 1/2 |
| SE200 | 2 |
| SE300 | 3 |



REDUCER BUSHINGS

| PART | SIZE |
|-------------|---------------|
| RB3818 | 3/8 x 1/8 |
| RB3814 | 3/8 x 1/4 |
| RB1214 | 1/2 x 1/4 |
| RB1238 | 1/2 x 3/8 |
| RB3418 | 3/4 x 1/8 |
| RB3414 | 3/4 x 1/4 |
| RB3438 | 3/4 x 3/8 |
| RB3412 | 3/4 x 1/2 |
| RB1012 | 1 x 1/2 |
| RB1034 | 1 x 3/4 |
| RB11434 | 1 1/4 x 3/4 |
| RB114100 | 1 1/4 x 1 |
| RB11234 | 1 1/2 x 3/4 |
| RB112100 | 1 1/2 x 1 |
| RB112114 | 1 1/2 x 1 1/4 |
| RB200100 | 2 x 1 |
| RB200114 | 2 x 1 1/4 |
| RB200112 | 2 x 1 1/2 |
| RB300200-GL | 3 x 2 |



MALE GH COUPLERS

| PART | SIZE |
|---------|----------|
| HC14MPP | 1/4 Hose |
| HC38MPP | 3/8 Hose |
| HC12MPP | 1/2 Hose |
| HC58MPP | 5/8 Hose |
| HC34MPP | 3/4 Hose |



NPT (M) X GH(M) ADAPTERS

| PART | SIZE |
|--------|-----------|
| #05PP | 3/4 x 3/8 |
| #11PP | 3/4 x 1/2 |
| #12PP | 3/4 x 3/4 |
| #13APP | GH x GH |



MALE THREAD X HB X HB TEES

| PART | SIZE |
|---------|--------------------|
| MT1012 | 1" x 1/2" x 1/2" |
| MT1034 | 1" x 3/4" x 3/4" |
| MT1038 | 1" x 3/8" x 3/8" |
| MT1234 | 1/2" x 3/4" x 3/4" |
| MT3412 | 3/4" x 1/2" x 1/2" |
| MT3412G | GH x 1/2" x 1/2" |
| MT3434 | 3/4" x 3/4" x 3/4" |
| MT3434G | GH x 3/4" x 3/4" |
| MT3438 | 3/4" x 3/8" x 3/8" |
| MT3438G | GH x 3/8" x 3/8" |



90° ELBOWS

| PART | SIZE |
|--------|-------|
| LL1212 | 1/2 |
| LL3434 | 3/4 |
| LL100 | 1 |
| LL114 | 1 1/4 |
| LL112 | 1 1/2 |
| LL200 | 2 |
| LL300 | 3 |



FEMALE GH COUPLERS

- Includes Washer, insert & Nut

| PART | SIZE |
|---------|----------|
| HC14FPP | 1/4 Hose |
| HC38FPP | 3/8 Hose |
| HC12FPP | 1/2 Hose |
| HC58FPP | 5/8 Hose |
| HC34FPP | 3/4 Hose |



GH(M) X NPT(F) ADAPTERS

| PART | SIZE |
|-------|-----------|
| #08PP | 3/4 x 1/2 |
| #10PP | 3/4 x 3/4 |



RUBBER HOSE WASHERS

| PART | DESCRIPTION |
|------|-------------|
| O1RW | 10 Pack |



NPT(M) X GH(F) ADAPTERS

| PART | SIZE |
|-------|-----------|
| #09PP | 3/4 x 3/4 |

NOTE: "G" in part number denotes garden hose thread.



HOSE ADAPTERS

- Male NPT thread x hose insert.

| PART | SIZE |
|----------|---------------|
| MB1814 | 1/8 X 1/4 |
| MB1812 | 1/8 X 1/2 |
| MB1838 | 1/8 X 3/8 |
| MB1414 | 1/4 X 1/4 |
| MB1438 | 1/4 X 3/8 |
| MB1412 | 1/4 X 1/2 |
| MB1458 | 1/4 X 5/8 |
| MB1434 | 1/4 X 3/4 |
| MB3814 | 3/8 X 1/4 |
| MB3838 | 3/8 X 3/8 |
| MB3812 | 3/8 X 1/2 |
| MB3858 | 3/8 X 5/8 |
| MB3834 | 3/8 X 3/4 |
| MB1214 | 1/2 X 1/4 |
| MB1238 | 1/2 X 3/8 |
| MB1212 | 1/2 X 1/2 |
| MB1258 | 1/2 X 5/8 |
| MB1234 | 1/2 X 3/4 |
| MB1210 | 1/2 X 1 |
| MB3414 | 3/4 X 1/4 |
| MB3438 | 3/4 X 3/8 |
| MB3412 | 3/4 X 1/2 |
| MB3458 | 3/4 X 5/8 |
| MB3434 | 3/4 X 3/4 |
| MB3410 | 3/4 X 1 |
| MB34114 | 3/4 X 1 1/4 |
| MB1038 | 1 X 1/4 |
| MB1012 | 1 X 1/2 |
| MB1058 | 1 X 5/8 |
| MB1034 | 1 X 3/4 |
| MB1010 | 1 X 1 |
| MB10114 | 1 X 1 1/4 |
| MB11434 | 1 1/4 X 3/4 |
| MB114100 | 1 1/4 X 1 |
| MB114114 | 1 1/4 X 1 1/4 |
| MB112112 | 1 1/2 X 1 1/2 |
| MB112200 | 1 1/2 X 2 |
| MB200112 | 2 X 1 1/2 |
| MB200 | 2 |
| MB300 | 3 |
| MB400 | 4 |



FEMALE ADAPTERS

- Female NPT thread x hose.

| PART | SIZE |
|---------|-----------|
| EL1212F | 1/8 X 1/4 |
| EL3412F | 1/8 X 3/8 |
| EL3434F | 3/4 X 3/4 |



HOSE ADAPTERS 90°

- Male NPT thread x hose insert.

| PART | SIZE |
|----------|---------------|
| EL1814 | 1/8 X 1/4 |
| EL1838 | 1/8 X 3/8 |
| EL1414 | 1/4 X 1/4 |
| EL1438 | 1/4 X 3/8 |
| EL1412 | 1/4 X 1/2 |
| EL1458 | 1/4 X 5/8 |
| EL3814 | 3/8 X 1/4 |
| EL3838 | 3/8 X 3/8 |
| EL3812 | 3/8 X 1/2 |
| EL1214 | 1/2 X 1/4 |
| EL1238 | 1/2 X 3/8 |
| EL1212 | 1/2 X 1/2 |
| EL1258 | 1/2 X 5/8 |
| EL1234 | 1/2 X 3/4 |
| EL1210 | 1/2 X 1 |
| EL3438 | 3/4 X 3/8 |
| EL3412 | 3/4 X 1/2 |
| EL3458 | 3/4 X 5/8 |
| EL3434 | 3/4 X 3/4 |
| EL3410 | 3/4 X 1 |
| EL1012 | 1 X 1/2 |
| EL1034 | 1 X 3/4 |
| EL1010 | 1 X 1 |
| EL11434 | 1 1/4 X 3/4 |
| EL114100 | 1 1/4 X 1 |
| EL114 | 1 1/4 X 1 1/4 |
| EL114112 | 1 1/4 X 1 1/2 |
| EL112 | 1 1/2 X 1 1/2 |
| EL200 | 2 X 2 |



STRAIGHT ADAPTERS

- Female NPT x insert.

| PART | SIZE |
|--------|-----------|
| FB1212 | 1/2 X 1/2 |
| FB3434 | 3/4 X 3/4 |
| FB3458 | 3/4 X 5/8 |



INSERT ELBOWS

- Insert x insert.

| PART | SIZE |
|-----------|---------------|
| IEL1414 | 1/4 X 1/4 |
| IEL3838 | 3/8 X 3/8 |
| IEL1212 | 1/2 X 1/2 |
| IEL5858 | 5/8 X 5/8 |
| IEL3434 | 3/4 X 3/4 |
| IEL1000 | 1x1 Nylon |
| IEL114114 | 1 1/4 X 1 1/4 |
| IEL112112 | 1 1/2 X 1 1/2 |
| IEL200200 | 2x2 |



INSERT TEES

- Insert (1) x insert (2) x insert (3).

| PART | (1) | (2) | (3) |
|---------|-------|-------|-------|
| T18 | 1/8 | 1/8 | 1/8 |
| T14 | 1/4 | 1/4 | 1/4 |
| T38 | 3/8 | 3/8 | 3/8 |
| T3812 | 3/8 | 1/2 | 1/2 |
| T12 | 1/2 | 1/2 | 1/2 |
| T1238NY | 1/2 | 3/8 | 3/8 |
| T58 | 5/8 | 5/8 | 5/8 |
| T34 | 3/4 | 3/4 | 3/4 |
| T3412 | 3/4 | 1/2 | 1/2 |
| T100 | 1 | 1 | 1 |
| T114 | 1 1/4 | 1 1/4 | 1 1/4 |
| T112 | 1 1/2 | 1 1/2 | 1 1/2 |
| T200 | 2 | 2 | 2 |



HOSE MENDERS

- Insert x insert.

| PART | SIZE |
|---------|-----------|
| SHM1800 | 1/8 |
| SHM1400 | 1/4 |
| SHM3800 | 3/8 |
| SHM3814 | 3/8 X 1/4 |
| SHM1200 | 1/2 |
| SHM1214 | 1/2 X 1/4 |
| SHM1238 | 1/2 X 3/8 |
| SHM1258 | 1/2 X 5/8 |
| SHM5800 | 5/8 |
| SHM3400 | 3/4 |
| SHM1000 | 1 |
| SHM1140 | 1 1/4 |
| SHM1120 | 1 1/2 |
| SHM2000 | 2 |



INSERT CROSSES

- 1/4 x 1/4 x 1/4 x 1/4.

| PART | SIZE |
|------|------|
| X14 | 1/4 |



STRAIGHT NOZZLE FITTINGS

- 1/16 x insert.
- Complete with lock nut.

| PART | SIZE |
|-------|------|
| NTS38 | 3/8 |
| NTS12 | 1/2 |



NOZZLE TEES

- 1/16 nozzle thread x insert.
- Complete with lock nut.

| PART | DESCRIPTION |
|---------|---------------------|
| NTT38 | 3/8 |
| NTT12 | 1/2 |
| NTT34 | 3/4 |
| Locknut | Locknut for NTT/NTL |



NOZZLE ELBOWS

- 1/16 nozzle thread x insert.
- Complete with lock nut.

| PART | SIZE |
|-------|------|
| NTL38 | 3/8 |
| NTL12 | 1/2 |
| NTL34 | 3/4 |



NOZZLE CROSSES

- 1/16 nozzle thread x insert.
- Complete with lock nut.

| PART | SIZE |
|------|------|
| T38C | 3/8 |
| T12C | 1/2 |



TRU-BLU THREAD SEALANT

- Vibration-resistant for use on plastic and all metal pipe threads.
- Very fast dry and flexible.
- Temperature use range from -7° to 60°C.
- Contains PTFE (Teflon®).
- 24 per case.

| PART | DESCRIPTION |
|------------|------------------------------|
| TRUBLU1.75 | Thread Sealant 1.75 oz. tube |
| TRUBLU4 | Thread Sealant 4 oz. |
| TRUBLU8 | Thread Sealant 8 oz. |

Galvanized/Stainless Steel Fittings

HOW TO ORDER: For Stainless Steel - Insert "SS" in front of part number (i.e. SSTT100) or for Galvanized - Insert "G" in front of part number (i.e. GTT100).
PRODUCT CATEGORIES: Stainless Steel Fittings – (F) Galvanized Steel Fittings – (E)

REDUCER BUSHINGS



| PART | SIZE |
|-----------|-----------------|
| *RB1418 | 1/4" x 1/8" |
| *RB3818 | 3/8" x 1/8" |
| *RB3814 | 3/8" x 1/4" |
| *RB1218 | 1/2" x 1/8" |
| *RB1214 | 1/2" x 1/4" |
| *RB1238 | 1/2" x 3/8" |
| *RB3418 | 3/4" x 1/8" |
| *RB3414 | 3/4" x 1/4" |
| *RB3438 | 3/4" x 3/8" |
| *RB3412 | 3/4" x 1/2" |
| *RB1038 | 1" x 3/8" |
| *RB1012 | 1" x 1/2" |
| *RB1034 | 1" x 3/4" |
| *RB11434 | 1 1/4" x 3/4" |
| *RB114100 | 1 1/4" x 1" |
| *RB11234 | 1 1/2" x 3/4" |
| *RB112100 | 1 1/2" x 1" |
| *RB112114 | 1 1/2" x 1 1/4" |
| *RB20034 | 2" x 3/4" |
| *RB200100 | 2" x 1" |
| *RB200114 | 2" x 1 1/4" |
| *RB200112 | 2" x 1 1/2" |
| *RB212200 | 2 1/2" x 2" |
| *RB300200 | 3" x 2" |
| *RB400200 | 4" x 2" |
| *RB400300 | 4" x 3" |

CAP



| PART | SIZE |
|---------|--------|
| *CAP18 | 1/8" |
| *CAP14 | 1/4" |
| *CAP38 | 3/8" |
| *CAP12 | 1/2" |
| *CAP34 | 3/4" |
| *CAP100 | 1" |
| *CAP114 | 1 1/4" |
| *CAP112 | 1 1/2" |
| *CAP200 | 2" |
| *CAP300 | 3" |
| *CAP400 | 4" |

PLUG



| PART | SIZE |
|--------|--------|
| *F1800 | 1/8" |
| *F1400 | 1/4" |
| *F3800 | 3/8" |
| *F1200 | 1/2" |
| *F3400 | 3/4" |
| *F1000 | 1" |
| *F1140 | 1 1/4" |
| *F1120 | 1 1/2" |
| *F2000 | 2" |
| *F3000 | 3" |

REDUCER TEE



| PART | SIZE |
|-----------|------------------------|
| *RT3412 | 3/4" x 3/4" x 1/2" |
| *RT1034 | 1" x 1" x 3/4" |
| *RT11434 | 1 1/4" x 1 1/4" x 3/4" |
| *RT114100 | 1 1/4" x 1 1/4" x 1" |

TEE



| PART | SIZE |
|--------|--------|
| *TT18 | 1/8" |
| *TT14 | 1/4" |
| *TT38 | 3/8" |
| *TT12 | 1/2" |
| *TT34 | 3/4" |
| *TT100 | 1" |
| *TT114 | 1 1/4" |
| *TT112 | 1 1/2" |
| *TT200 | 2" |
| *TT300 | 3" |
| *TT400 | 4" |

90° ELBOW



| PART | SIZE |
|---------|--------|
| *LL1818 | 1/8" |
| *LL1414 | 1/4" |
| *LL3838 | 3/8" |
| *LL1212 | 1/2" |
| *LL3434 | 3/4" |
| *LL100 | 1" |
| *LL114 | 1 1/4" |
| *LL112 | 1 1/2" |
| *LL200 | 2" |
| *LL300 | 3" |
| *LL400 | 4" |

STREET ELBOWS



| PART | SIZE |
|--------|--------|
| *SE18 | 1/8" |
| *SE14 | 1/4" |
| *SE38 | 3/8" |
| *SE12 | 1/2" |
| *SE34 | 3/4" |
| *SE100 | 1" |
| *SE114 | 1 1/4" |
| *SE112 | 1 1/2" |
| *SE200 | 2" |
| *SE300 | 3" |
| *SE400 | 4" |

CROSS



| PART | SIZE |
|--------|--------|
| *CR18 | 1/8" |
| *CR14 | 1/4" |
| *CR38 | 3/8" |
| *CR12 | 1/2" |
| *CR34 | 3/4" |
| *CR100 | 1" |
| *CR114 | 1 1/4" |
| *CR112 | 1 1/2" |
| *CR200 | 2" |
| *CR300 | 3" |

45° ELBOW



| PART | SIZE |
|------------|--------|
| *LL1818-45 | 1/8" |
| *LL1414-45 | 1/4" |
| *LL3838-45 | 3/8" |
| *LL1212-45 | 1/2" |
| *LL3434-45 | 3/4" |
| *LL100-45 | 1" |
| *LL114-45 | 1 1/4" |
| *LL112-45 | 1 1/2" |
| *LL200-45 | 2" |
| *LL300-45 | 3" |

UNION



| PART | SIZE |
|--------|--------|
| *U1800 | 1/8" |
| *U1400 | 1/4" |
| *U3800 | 3/8" |
| *U1200 | 1/2" |
| *U3400 | 3/4" |
| *U1000 | 1" |
| *U1140 | 1 1/4" |
| *U1120 | 1 1/2" |
| *U2000 | 2" |
| *U3000 | 3" |

FEMALE COUPLING



| PART | SIZE |
|---------|--------|
| *FC1800 | 1/8" |
| *FC1400 | 1/4" |
| *FC3800 | 3/8" |
| *FC1200 | 1/2" |
| *FC3400 | 3/4" |
| *FC1000 | 1" |
| *FC1140 | 1 1/4" |
| *FC1120 | 1 1/2" |
| *FC2000 | 2" |
| *FC3000 | 3" |
| *FC4000 | 4" |

REDUCER ELBOW



| PART | SIZE |
|-----------|-------------|
| *LL3412 | 3/4" x 1/2" |
| *LL1012 | 1" x 1/2" |
| *LL1034 | 1" x 3/4" |
| *LL114100 | 1 1/4" x 1" |

REDUCER COUPLING



| PART | SIZE |
|-----------|-----------------|
| *FC1418 | 1/4" x 1/8" |
| *FC3814 | 3/8" x 1/4" |
| *FC1238 | 1/2" x 3/8" |
| *FC3414 | 3/4" x 1/4" |
| *FC3438 | 3/4" x 3/8" |
| *FC3412 | 3/4" x 1/2" |
| *FC10012 | 1" x 1/2" |
| *FC10034 | 1" x 3/4" |
| *FC11434 | 1 1/4" x 3/4" |
| *FC114100 | 1 1/4" x 1" |
| *FC11234 | 1 1/2" x 3/4" |
| *FC112100 | 1 1/2" x 1" |
| *FC112114 | 1 1/2" x 1 1/4" |
| *FC200100 | 2" x 1" |
| *FC200112 | 2" x 1 1/2" |
| *FC300200 | 3" x 2" |
| *FC300212 | 3" x 2 1/2" |
| *FC400300 | 4" x 3" |

Galvanized/Stainless Steel & Tube Fittings

HOW TO ORDER: For Stainless Steel - Insert "SS" in front of part number (i.e. SSTT100) or for Galvanized - Insert "G" in front of part number (i.e. GTT100).
PRODUCT CATEGORIES: Stainless Steel Fittings – (F) Galvanized Steel Fittings – (E)

NIPPLES



| PART | SIZE |
|----------|------------|
| *M1800 | 1/8" close |
| *M1800-2 | 1/8" x 2" |
| *M1800-3 | 1/8" x 3" |
| *M1800-4 | 1/8" x 4" |
| *M1800-5 | 1/8" x 5" |
| *M1800-6 | 1/8" x 6" |
| *M1400 | 1/4" close |
| *M1400-2 | 1/4" x 2" |
| *M1400-3 | 1/4" x 3" |
| *M1400-4 | 1/4" x 4" |
| *M1400-5 | 1/4" x 5" |
| *M1400-6 | 1/4" x 6" |
| *M3800 | 3/8" close |
| *M3800-2 | 3/8" x 2" |
| *M3800-3 | 3/8" x 3" |
| *M3800-4 | 3/8" x 4" |

| PART | SIZE |
|------------|---------------|
| *M3800-412 | 3/8" x 4 1/2" |
| *M3800-5 | 3/8" x 5" |
| *M3800-512 | 3/8" x 5 1/2" |
| *M3800-6 | 3/8" x 6" |
| *M1200 | 1/2" close |
| *M1200-2 | 1/2" x 2" |
| *M1200-3 | 1/2" x 3" |
| *M1200-4 | 1/2" x 4" |
| *M1200-5 | 1/2" x 5" |
| *M1200-6 | 1/2" x 6" |
| *M3400 | 3/4" close |
| *M3400-2 | 3/4" x 2" |
| *M3400-212 | 3/4" x 2 1/2" |
| *M3400-3 | 3/4" x 3" |
| *M3400-4 | 3/4" x 4" |
| *M3400-5 | 3/4" x 5" |

| PART | SIZE |
|------------|--------------|
| *M3400-6 | 3/4" x 6" |
| *M1000 | 1" close |
| *M1000-2 | 1" x 2" |
| *M1000-3 | 1" x 3" |
| *M1000-4 | 1" x 4" |
| *M1000-415 | 1" x 4 1/2" |
| *M1000-5 | 1" x 5" |
| *M1000-6 | 1" x 6" |
| *M1000-8 | 1" x 8" |
| *M1000-10 | 1" x 10" |
| *M1140 | 1 1/4" close |
| *M1140-2 | 1 1/4" x 2" |
| *M1140-3 | 1 1/4" x 3" |
| *M1140-4 | 1 1/4" x 4" |
| *M1140-5 | 1 1/4" x 5" |
| *M1140-6 | 1 1/4" x 6" |

| PART | SIZE |
|----------|--------------|
| *M1120 | 1 1/2" close |
| *M1120-2 | 1 1/2" x 2" |
| *M1120-3 | 1 1/2" x 3" |
| *M1120-4 | 1 1/2" x 4" |
| *M1120-5 | 1 1/2" x 5" |
| *M1120-6 | 1 1/2" x 6" |
| *M2000 | 2" close |
| *M2000-3 | 2" x 3" |
| *M2000-4 | 2" x 4" |
| *M2000-5 | 2" x 5" |
| *M2000-6 | 2" x 6" |
| *M2120 | 2 1/2" close |
| *M3000 | 3" close |
| *M4000 | 4" close |



ADAPTER

| PART | DESCRIPTION |
|--------|-----------------------|
| 366-4B | 1/4" FNPT x 1/4" Tube |
| 366-6B | 1/4" FNPT x 3/8" Tube |
| 366-6C | 3/8" FNPT x 3/8" Tube |



MALE ADAPTER

| PART | DESCRIPTION |
|--------|-----------------------|
| 368-4A | 1/8" MNPT x 1/4" Tube |
| 368-4B | 1/4" MNPT x 1/4" Tube |
| 368-6B | 1/4" MNPT x 3/8" Tube |
| 368-4C | 3/8" MNPT x 1/4" Tube |
| 368-6C | 3/8" MNPT x 3/8" Tube |



ELBOW

| PART | DESCRIPTION |
|-------|-----------------------|
| 365-4 | 1/8" Tube x 1/4" Tube |
| 365-6 | 3/8" FNPT x 3/8" Tube |
| 365-8 | 1/2" FNPT x 1/2" Tube |



TEE

| PART | DESCRIPTION |
|-------|---------------------|
| 364-4 | 1/4" Tube 3-Way Tee |
| 364-6 | 3/8" Tube 3-Way Tee |
| 364-8 | 1/2" Tube 3-Way Tee |



UNION

| PART | DESCRIPTION |
|-------|-----------------------|
| 362-4 | 1/4" Tube x 1/4" Tube |
| 362-6 | 3/8" Tube x 3/8" Tube |
| 362-8 | 1/2" Tube x 1/2" Tube |



FEMALE ELBOW

| PART | DESCRIPTION |
|--------|-----------------------|
| 370-6B | 1/4" FNPT x 3/8" Tube |
| 370-6C | 3/8" FNPT x 3/8" Tube |
| 370-8D | 1/2" FNPT x 1/2" Tube |



CENTER TEE

| PART | DESCRIPTION |
|--------|-----------------------|
| 372-4B | 1/4" MNPT x 1/4" Tube |
| 372-6B | 1/4" MNPT x 3/8" Tube |



MALE ELBOW

| PART | DESCRIPTION |
|--------|-----------------------|
| 369-4A | 1/8" MNPT x 1/4" Tube |
| 369-4B | 1/4" MNPT x 1/4" Tube |
| 369-6B | 1/4" MNPT x 3/8" Tube |
| 369-4C | 3/8" MNPT x 1/4" Tube |
| 369-6C | 3/8" MNPT x 3/8" Tube |
| 369-8C | 3/8" MNPT x 1/2" Tube |
| 369-8D | 1/2" MNPT x 1/2" Tube |



END TEE

| PART | DESCRIPTION |
|--------|-----------------------|
| 371-4B | 1/4" MNPT x 1/4" Tube |

More sizes available. Please call.