



**HOMESTEAD 3-PT. SPRAYERS**

**Features:**

- Category I or II Hitch configuration available
- Sprayers come complete with Hypro Cast Series Roller Pump
- TeeJet manual 17Y Selector Valve for boom control standard on all models. Optional electric boom control upgrade is available
- 4 Point stand for ease of storage when not in use
- 1 Year Sprayer Warranty

**1. Select Your Sprayer – PLEASE SPECIFY 540 or 1000 RPM**

PART	DESCRIPTION
HOMESTEAD	50 US Gallon 3-PT. Sprayer
HOMESTEAD-HD110	110 US Gallon 3-PT. Heavy Duty Sprayer
HOMESTEAD-HD150	150 US Gallon 3-PT. Heavy Duty Sprayer

**2. Select Your Optional Equipment**

Homestead sprayer options give you the flexibility to customize your sprayer the way you need it. Five boom sizes (12' & 18' for 55 gallon sprayer) and 20', 30', & 45' for the 110 and 150 US gallon HD models or go boomless with your choice of either Hypro XT Series or Boominator™ spray nozzles.

PART	DESCRIPTION
BOOM12	Boom – 12 Foot Spray Pattern (20" spacing)
BOOM18	Boom – 18 Foot Spray Pattern (20" spacing)
BOOM20	Boom – 20 Foot Spray Pattern (20" spacing)
BOOM30	Boom – 30 Foot Spray Pattern (20" spacing)
BOOM45	Boom – 45 Foot Spray Pattern (20" spacing)
BOOMLESSHYPRO	Boomless kit w/ Hypro XT (Stainless) Nozzles
BOOMLESSBOOM	Boomless kit w/ Boominator™ Nozzles
ATVHR-H	Hose Reel, 30' Hose, Spray Wand, & Bracket
HOMESTEAD-EC	Electric Boom Control Upgrade



**HOMESTEAD ATV SKID MOUNT SPRAYERS**

Choose from two tank sizes (50 & 100 US Gallon) with either a Honda-driven Ace pump or a 12 V electric pump. Units as listed below do not include the boom, but you can order either the 12' or 18' wide standard boom or the boomless spray tip booms as indicated in the Homestead 3-PT sprayer above.

- 4 HP Honda engine with Ace Centrifugal pump (57 PSI max / 22 GPM max) or Delavan 12 Volt Electric pump (100 PSI max / 7 GPM).
- High quality plumbing parts from TeeJet and Banjo used.
- All units built standard with Manual controls (TeeJet Shut-off & regulating valves) and Hose Reel with Spray Wand with 30' of hose.
- The **ATV100EC** comes with TeeJet 744E Controller and a 3 bank of 430 Series valves.

PART	DESCRIPTION
ATV50	50 Gallon ATV Sprayer – 4 HP Honda / Ace Pump – NO BOOM
ATV100	100 Gallon ATV Sprayer – 4 HP Honda / Ace Pump – NO BOOM
ATV100EC	100 Gallon ATV Sprayer – 4 HP Honda / Ace Pump – NO BOOM
ATV100E	100 Gallon ATV Sprayer – 12V Electric Pump – NO BOOM



**CHAPIN PRO XP SERIES TANK SPRAYERS**

- Available in 1, 2, and 3 Gallon tank sizes for the lawn / landscaping professional.
- Viton Seals and Gaskets for use with a wide range of fertilizers and chemicals.
- Cushion grip shut-off with internal filter and lock-on trigger feature.
- SureSpray® in-tank anti-clog filter blocks debris from hose, trigger, and spray tip.
- Pressure relief valve built into translucent poly non-corrosive spray tank.

PART	DESCRIPTION
26011XP	1 Gallon Pro XP Series Tank Sprayer
26021XP	2 Gallon Pro XP Series Tank Sprayer
26031XP	3 Gallon Pro XP Series Tank Sprayer
Chapin Pro XP Series Tank Sprayer Parts	
301631-1	Replacement Pump – Pro Series Sprayer
6-8130	Hose Assembly – Pro Series Sprayer
6-8219	20" Poly Wand (no nozzle) – Pro Series Sprayer
6-8131	Nozzle Assembly – Pro Series Sprayer
6-8138	Replacement Trigger for Pro Series Sprayer
6-4601	Seal and Gasket Kit – Pro Series Sprayer
6-4605	Pressure Relief Valve – Pro Series Sprayer
3-2694-11	Outlet Tube – Pro Series Sprayer



**SURESPRAY™ SERIES TANK SPRAYERS**

- Available in 1, 2, and 3 Gallon tank sizes
- Multi-purpose sprayer designed for pesticides, fertilizers, and general cleaning
- Nitrile seals
- Translucent non-corrosive and durable spray tank
- Ergonomic pump handle and funnel top for ease of filling

PART	DESCRIPTION
20010	1 Gallon SureSpray™ Series Tank Sprayer
20020	2 Gallon SureSpray™ Series Tank Sprayer
20030	3 Gallon SureSpray™ Series Tank Sprayer
Chapin SureSpray™ Series Tank Sprayer Parts	
6-7749	18" Poly Wand Extension (nozzle not included)
6-2001	Hose Assembly
6-2000	Replacement Trigger Assembly
6-6003	Poly Adjustable Nozzle
301128	Replacement Pump Assembly
6-1925	Seal and Gasket Set



**CHAPIN INDUSTRIAL SERIES SPRAYER**

- 3-Gallon poly tank with wide mouth opening for easy filling and cleaning.
- Viton seals and gaskets designed for industrial and concrete applications.
- Compatible with most industrial chemicals.
- 18-Inch brass wand, nozzle, and shut-off with lock-on feature.
- Pressure relief valve; anti-clog filter.

PART	DESCRIPTION
22790XP	3-Gallon Sprayer



**CHAPIN LAWN AND GARDEN SPRAYER**

- 1-Gallon translucent tank with funnel top for easy filling and cleaning.
- Compatible with common fertilizers, weed killers, and pesticides.
- 12-Inch wand, 34-inch hose, adjustable nozzle, and comfortable spray handle.
- In-tank filter reduces clogging.

PART	DESCRIPTION
20000	1-Gallon Sprayer



Wand not included

**CHAPIN 80° SPOT SPRAY SHIELD KIT**

- Fits most Chapin brand backpack and tank sprayers.
- Threads onto wand.
- Reduces spray drift damage on non-target plants.
- Cone shield, 80° spray tip, and body included in kit.

PART	DESCRIPTION
6-7773	Spray Shield Kit



**CHAPIN 48 OZ. HAND SPRAYER**

- 48 US oz poly non-corrosive tank
- Viton seals
- Adjustable cone spray nozzle
- SureSpray™ Anti-clog filter

PART	DESCRIPTION
1046	48 oz. Hand Sprayer



**32 OZ. UPSIDE DOWN SPRAYER**

- Sprays in any position – even upside.
- Adjustable spray nozzle – fine mist to solid stream.

PART	DESCRIPTION
1105	Upside Down Sprayer



**CHAPIN 63800 WIDE MOUTH PRO SERIES PISTON PUMP BACKPACK SPRAYER**

- 4 US gallon true capacity tank w/ extra large 6" easy-fill diameter opening.
- Viton™ Seals and Gaskets for chemical spraying.
- Strainer/filter basket helps keep debris out of tank.
- Cushion grip spray handle reduces hand fatigue.
- Adjustable padded shoulder and waist straps for the perfect fit and comfort.
- Pumping handle can be set for left or right hand use.
- Brass, poly fan, and poly cone nozzles included.
- 20" Poly spray wand extension.

PART	DESCRIPTION
63800	Wide Mouth Pro Series 4-Gallon Piston Pump Backpack Sprayer



**CHAPIN 64800 PRO SERIES DIAPHRAGM PUMP BACKPACK SPRAYER**

- Diaphragm-style pump mechanism for spraying wettable powders.
- 4 US gallon true capacity with large 4" diameter opening for easy filling.
- Strainer/filter basket helps keep debris out of spray tank.
- Cushion grip spray handle reduces hand fatigue.
- Adjustable padded shoulder and waist straps for the perfect fit and comfort.
- Pumping handle can be oriented for either left or right hand use.
- Brass, poly fan, and poly cone nozzles included.
- Viton™ Seals and Gaskets for chemical spraying.

PART	DESCRIPTION
64800	Pro Series 4-Gallon Diaphragm Pump Backpack Sprayer



**CHAPIN 63900 COMMERCIAL DUTY DUAL DISPLACEMENT PRO BACKPACK SPRAYER**

- Dual displacement piston and diaphragm pump technology provides increased pressure (120+ PSI) and eliminates piston leaking.
- Self-cleaning JetClean design minimizes clogging.
- 4 US gallon true capacity.
- 6" Extra large diameter opening with strainer basket for easy, debris-free filling.
- Comfort trigger handle w/ serviceable filter.
- Viton™ Seals for chemical spraying.
- Comfortable back pad/double padded shoulder straps.
- Swing away left or right reversible pump handle.
- Brass, poly fan, and poly cone nozzles included.

PART	DESCRIPTION
63900	4-Gallon Professional Dual Displacement Backpack Sprayer



**CHAPIN 24V RECHARGEABLE BATTERY POWERED ELECTRIC BACKPACK SPRAYER**

- 4 US Gallon poly solution tank.
- Powered by 24V Lithium Ion rechargeable Battery. (Base included.)
- One charge sprays up to two hours continuous (58 US gallons).
- Weighs 39% less than competitive units (9.8 lbs vs. 16 lbs).
- Sprays at 35 - 40 PSI.
- Equipped with Viton® seals and gaskets for chemical spraying.
- 6" Wide Mouth™ cap with strainer for easy, debris-free filling.
- Built-in carrying handle makes cap removal easy and carrying the unit a breeze.
- Uses the same 63800 Pro Series tank assembly, filters, and shut-off.
- Adjustable brass, poly fan, and poly cone nozzles included.

PART	DESCRIPTION
63924	Chapin 24V Backpack Sprayer w/ charger & battery
6-8238	24V Lithium Ion Rechargeable Battery (2.0Ah) and Charger Base Combo for 63924 Backpack Sprayer

**GENUINE CHAPIN BACKPACK SPRAYER PARTS, REPAIR KITS, AND ACCESSORIES**

PART	DESCRIPTION
6-8224	Piston Diaphragm Pump Assembly – 63900
6-8225	Piston Collar Assembly – 63900
6-8180	Piston Pump Repair Seal Kit – 63800
6-8120B	Repair Kit for 6-8138 Trigger Assembly – All Chapin models
6-8138	Trigger Assembly – All Chapin models
6-8219	20" Poly Spray Wand Assembly – 63800, 64800, 63924
6-8122	Brass Adjustable Nozzle – All Chapin models
6-8148	Nozzle Elbow Assembly – All Chapin models
6-8105	48" Hose Assembly – All Chapin models
6-8146	4" Filter Basket with Cap – 64800

PART	DESCRIPTION
6-8146-1	6" Filter Basket with Cap – 63800, 63900, 63924
6-8183	Complete Diaphragm Pump Assembly – 64800
6-8179	Piston/Cup/Linkage Assembly – 63800
6-8178	Cylinder Assembly – 63800
6-8151	Relief Valve – All Chapin models
6-8137	Carry Strap – 63800, 64800, 63924
6-8152	Wand Clip – 63800, 64800, 63924
6-7780	2 Nozzle Poly Boom – All Chapin models
6-7781	3 Nozzle Poly Boom – All Chapin models
6-7773	Spot Spraying Cone Shield w/ Nozzle – All Chapin models



**WORKHORSE 25 GALLON DELUXE ATV BOOMLESS SPRAYER**

- 25 US gallon poly tank with large fill mouth.
- Quick-detach 2-Nozzle spray boom with check valves and strainers.
- 12-Volt demand pump; 4.0 GPM – 45 PSI maximum pressure.
- 24 Foot total spray coverage.
- Shut-off valves to spray right or left side independently.
- Boom adjustable to 3 different heights.
- Deluxe pistol grip w/ 15' of hose and adjustable spray tip.
- Pressure gauge (adjustable pressure from 0 to 60 PSI).
- 8-Foot wiring harness with battery clips and switch.
- ATV mounting straps included.
- 2 Year Manufacturer's warranty from date of manufacture.

PART	DESCRIPTION
WH-ATV25BL	25 Gallon ATV Boomless Sprayer

Shown mounted to WorkHorse Spot Sprayer - Sprayer not included.



Folds up for storage or transportation.

**DELUXE 7 NOZZLE ATV BOOM KIT**

- Attaches / detaches to the WorkHorse Spot Sprayer using a Quick Mount system to convert unit for use on an ATV.
- 7-Nozzle fold-out boom w/ flat fan style spray tips, check valves, and strainers.
- Provides up to 140 inch total spray coverage.
- Spring loaded boom arms fold easily for storage or travel between spray sites.
- 2 Year Manufacturer's warranty from date of manufacture.

PART	DESCRIPTION
WH-ATV007BK	7 Nozzle ATV Boom Kit



**DELUXE 2 NOZZLE ATV BOOM KIT**

- Attaches / detaches to the WorkHorse Spot Sprayer using a Quick Mount system to convert unit for use on an ATV.
- 2-Nozzle boom w/ check valves and strainers provides up to 80 inch total spray coverage.
- 2 Year Manufacturer's warranty from date of manufacture.

PART	DESCRIPTION
WH-ATV002BK	2 Nozzle ATV Boom Kit



**WORKHORSE 25 GALLON DELUXE TOW BEHIND SPRAYER**

- 25 US gallon poly tank with large fill mouth.
- 2-Nozzle break-away style boom with 80 inch spray coverage.
- 12-Volt demand pump; 2.0 GPM – 60 PSI maximum pressure.
- Deluxe pistol grip w/ 15' of hose and adjustable spray tip.
- Pressure gauge (adjustable pressure from 0 to 60 PSI).
- 8-Foot wiring harness with battery clips and switch.
- 4.10/3.50 x 6 Pneumatic tires.
- Heavy duty corrosion resistant frame.
- 2 Year Manufacturer's warranty from date of manufacture.

PART	DESCRIPTION
WH-LG25DTS	25 Gallon Tow Behind Sprayer



**WORKHORSE 25 GALLON DELUXE SPOT SPRAYER**

- 25 US gallon poly tank with large fill mouth.
- Boom Ready – Add either the 2 nozzle or deluxe 7 nozzle boom kit.
- 12-Volt Demand pump; 2.0 GPM – 60 PSI maximum pressure.
- Deluxe pistol grip w/ 15' of hose and adjustable spray tip.
- Pressure gauge (adjustable pressure from 0 to 60 PSI).
- 8-Foot wiring harness with battery clips and switch.
- In-line Shut-off for quick On/OFF spraying.
- 2 Year Manufacturer's warranty from date of manufacture.

PART	DESCRIPTION
WH-LG25DSS	25 Gallon Spot Sprayer

**WORKHORSE SPRAYER PARTS AND ACCESSORIES**

- Need a part from your WorkHorse Sprayer? We can help!

PART	DESCRIPTION
WH-101CA	Optional 12-Volt Car Power Adapter Kit
WH-600117	In-line Strainer w/ Check Valve
WH-600122	Y-Valve w/ Shut-Offs – FGH x MGH x MGH threads
WH-600133	Spray Tank Lid – all models
WH-600151	Spray Wand Clip
WH-600156	Spray Wand & 15' Hose Assembly – complete
WH-600185	Elbow Fitting – 3/8" Hose Barb x Quick Disconnect (QD)
WH-600248	Boomless Spray Nozzle – left side
WH-600249	Boomless Spray Nozzle – right side
WH-600211	Quick Disconnect (QD) Fitting – 2.0 GPM pump only
WH-600212	Quick Disconnect (QD) Fitting – 4.0 GPM pump only
WH-600216	In-line Shut-Off Valve – FGH x MGH thread
WH-600223	Elbow Fitting – 3/8" hose barb x QD (4.0 GPM pump only)
WH-640451	2.2 GPM 12-Volt Remco Pump
WH-630031	5.0 GPM 12-Volt Remco Pump
WH-600132	WorkHorse 25 US Gallon Tank w/ 6" Lid



**WORKHORSE 40 & 60 GALLON DELUXE TOW BEHIND SPRAYERS**

- 40 US gallon model features 2.2 GPM / 60 PSI max. Remco 12-Volt demand pump, 3-Section 5-nozzle boom w/ 110° fan spray tips; covers approx. 100".
- 60 US gallon model features 5.0 GPM / 60 PSI max. Remco 12-Volt demand pump, 3-Section 7-nozzle boom w/ 110° fan spray tips; covers approx. 140".
- Adjustable pressure range (0 to 60 PSI) – pressure gauge included.
- Deluxe pistol grip spray gun w/ 25' of hose and adjustable brass tip.
- 8-Foot wiring harness w/ battery clips and ON/OFF switch; commercial fuse.
- H.D. corrosion resistant frame; poly tank includes drain and 5" tethered lid.

PART	DESCRIPTION
WH-LG425DTS	40 Gallon Tow Sprayer w/ 5-nozzle boom
WH-LG657DTS	60 Gallon Tow Sprayer w/ 7-nozzle boom



**WORKHORSE 40 GALLON 3-POINT SPRAYER**

- 40 US gallon poly tank with drain and large fill mouth – 5 inch tethered lid.
- 5-Nozzle boom with standard 110° flat fan spray tips – 100" total spray coverage.
- Deluxe pistol grip spray gun w/ 25' of hose and adjustable brass tip.
- 12-Volt demand Remco pump: 2.2 GPM – 60 PSI maximum pressure.
- Adjustable pressure range (0 to 60 PSI) – pressure gauge included.
- 8-Foot wiring harness w/ battery clips and ON/OFF switch; commercial grade fuse.

PART	DESCRIPTION
WH-LG4253PT	40 Gallon 3-Point 5-Nozzle Sprayer w/ spray gun



WH-BK007HM Boom Shown  
(also sold separately)

**WORKHORSE 40 OR 60 GALLON HITCH MOUNT SKID SPRAYER**

- 40 or 60 Gallon poly tank with drain and large fill mouth; 5" tethered lid.
- Deluxe pistol spray grip with 25' of hose and adjustable brass tip.
- 12-Volt Remco Demand Pump: 2.2 GPM - 60 PSI maximum pressure.
- Adjustable pressure range (0 to 60 PSI); pressure gauge included.
- 8' Wiring harness with battery clips, ON/OFF switch with commercial-grade fuse.
- 40-Gallon model includes a 5-Nozzle heavy-duty folding boom (100" coverage) with exclusive hitch mount design featuring 300 degrees of adjustability; fits standard 2" hitch receiver.
- 60-Gallon model, same as above except with 7-Nozzle boom (140" coverage).

PART	DESCRIPTION
WH-UTV425HM	40 Gallon Hitch Mount Skid Sprayer
WH-UTV627HM	60 Gallon Hitch Mount Skid Sprayer



**WORKHORSE 60 GALLON BOOMLESS HITCH MOUNT SPRAYER**

- 60 US gallon poly tank with drain and 5" tethered lid.
- 2-Nozzle boomless tip quick detach spray boom – 24' total spray coverage.
- Shut-off valves to spray left or right independently.
- 12-Volt demand Remco pump: 5.0 GPM – 60 PSI maximum pressure.
- Adjustable pressure range (0 to 60 PSI) – pressure gauge included.
- Deluxe pistol grip spray gun w/ 25' of hose and adjustable brass tip.
- 8-Foot wiring harness w/ battery clips and ON/OFF switch; commercial fuse.

PART	DESCRIPTION
WH-UTV65BLHM	60 USG Boomless Hitch Mount Sprayer w/ spray gun



**WORKHORSE 60 GALLON BOOMLESS 3-POINT SPRAYER**

- 60 US gallon poly tank with drain and 5" tethered lid.
- 2-Nozzle boomless tip quick detach spray boom – 24' total spray coverage.
- Shut-off valves to spray left or right independently.
- 12-Volt demand Remco pump: 5.0 GPM – 60 PSI maximum pressure.
- Adjustable pressure range (0 to 60 PSI) – pressure gauge included.
- Deluxe pistol grip spray gun w/ 25' of hose and adjustable brass tip.
- 8-Foot wiring harness w/ battery clips and ON/OFF switch; commercial fuse.

PART	DESCRIPTION
WH-LG65BL3PT	40 Gallon Boomless 3-Point Sprayer w/ spray gun



**WORKHORSE 60 GALLON 3-POINT SPRAYER**

- 60 US gallon poly tank with drain and large fill mouth – 5 inch tethered lid.
- 3-Section 7 nozzle boom with 110° fan spray tips covers approximately 140 inches.
- 12-Volt demand Remco pump: 2.2 GPM – 60 PSI maximum pressure.
- Adjustable pressure range (0 to 60 PSI).
- Deluxe pistol grip spray gun w/ 25' of hose and adjustable brass tip.
- 8-Foot wiring harness w/ battery clips and ON/OFF switch; commercial grade fuse.

PART	DESCRIPTION
WH-LG6573PT	60 Gallon 3-Point 7-Nozzle Sprayer w/ spray gun

# Sprayers and No-Drift Applicators



### DANDY-LION KILLER NO-DRIFT APPLICATORS

This gravity fed applicator features the "Tru-Kleen" tank that ensures the solution in the tank completely empties. The no-drift design allows you to get as close to non-target areas on established turf without fear of overspray or drift.

Too windy to spray? Not an issue with these applicators! The manifold tube distributes the solution evenly across the roller ensuring good coverage. Stocked in 2 sizes with repair parts available.

- WR36: 3-gallon push-type with adjustable handle; 36" wide roller.
- WR48: 12-gallon pull-type with adjustable hitch; 48" wide roller.
- WR72: 25-gallon pull-type; 72" wide roller – SPECIAL ORDER ONLY.

PART	DESCRIPTION
WR36	3-Gallon 36" Roller Push-Type No-Drift Applicator
WR48	12-Gallon 48" Roller Tow-Type No-Drift Applicator
WR72	25-Gallon 72" Roller Tow-Type No-Drift Applicator

WR48

WR36

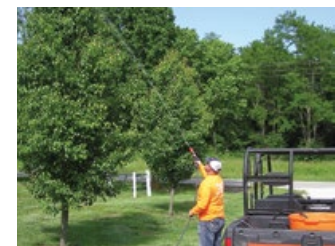


Comes Fully Assembled

### WORKHORSE 5 GALLON RECHARGEABLE SPOT SPRAYER

- 5 US Gallon (18.9L) Corrosion Resistant Polyethylene Tank
- 1.0 GPM Demand Pump powered by 12V Rechargeable battery
- Up to 40 Gallons of spraying on one battery charge
- Up to 12 foot vertical and 25 foot horizontal spray distance capacity
- Complete with Commercial Grade Wiring Harness, 9' Coil Hose, and AC Charger

PART	DESCRIPTION
WH-LG05SS	5 Gallon Rechargeable Spot Sprayer



### PORTABLE HIGH-PRESSURE 12-VOLT TREE SPRAYER

Go mobile with this Portable High-Pressure Sprayer! With just a drop of the suction hose and a 12-volt connection, you are ready to start spraying.

Besides tall trees, this unit can be used for orchards, vineyards, along fence lines, and protecting livestock from pests.

Perfect for homeowners looking to do their own tree spraying!

#### Features:

- 200 PSI, 2.0 GPM Everflo 12-Volt Plunger pump with adjustable pressure regulator.
- Reach up to 30' vertically & 35' horizontally w/ included Turbo Flash Spray Gun (mist to stream spray pattern adjustability).
- Easy priming, durable, and superior resistance to corrosive chemicals.
- 8' Suction hose and 15' Sprayer hose.
- Spray from any tank.



### WICK APPLICATOR

- A handy applicator for applying selective and non-selective herbicides in areas where overspray and drift are a concern.
- Variable flow rate and manual gravity flow shut-off.

PART	DESCRIPTION
WICK	Wick Spot Applicator

PART	DESCRIPTION
TREE SPRAYER	12-Volt High-Pressure Tree Sprayer

# ULV Applicators



### TWISTER XL3 MOTORIZED KNAPSACK ULV SPRAYER

Featuring a remarkable nozzle and blower system that outperforms the competition in value, durability, and performance, the Twister XL3 is the most impressive ULV backpack applicator in the world. Ideal for use around golf courses, campgrounds, parks, farms, etc., to control mosquitoes and flies.

- Single high output Microtec™ nozzle.
- Powered by a Honda 4-stroke motor. Low emission, high performance engine.
- 95% of the droplets below 20 microns at flow rates up to 6 oz/min (178 ml/min).
- High speed rotary, 3-stage, belt driven blower; 95 CFM unrestricted. 3 PSI max.
- Interchangeable restricting orifice to produce flow rate of 1.5 oz/min (45 ml/min); 500 ml/min using optional dual nozzle attachment (kit # 39716 – special order).
- Fuel Tank – 17 oz. (500 ml); approximate run time is 55 minutes.
- Formulation Tank – 1 gallon (3.78 litres).
- 36 lbs (16.3 kg) dry weight.

PART	DESCRIPTION
TWISTERXL3	Motorized Knapsack ULV Sprayer

### HURRICANE ULTRA II LOW VOLUME APPLICATOR

The Hurricane Ultra II ULV mister is an electric portable aerosol applicator that dispenses both oil and water-based products including Insecticides, Fungicides, Disinfectant, and Germicides.

The Hurricane Ultra II is ideal for use in spraying industrial and residential areas. Farms, greenhouses, warehouses, animal care facilities, sanitation, germicidal spraying and disease control programs are just a few of the markets where the Hurricane Ultra II is used. Its rugged design handles corrosive liquids and heavy impacts.

- Solid stainless-steel metering valve for delivering precise outputs and maximizing use of chemicals. Adjustable from 0 to 4.5 gallons per hour.
- Droplet sizes can be controlled for both ULV spraying and residual spraying.
- Translucent, low profile 3.8L capacity tank design virtually eliminates tipping... empty or full!
- 110-Volt motor with 20,000 RPM continuous duty.
- Dimensions: 12" L x 12" W x 14" H; weight 3 kgs (6.6 lbs.) empty

PART	DESCRIPTION
HURRICANE	Hurricane Ultra II Low Volume Applicator – 110V

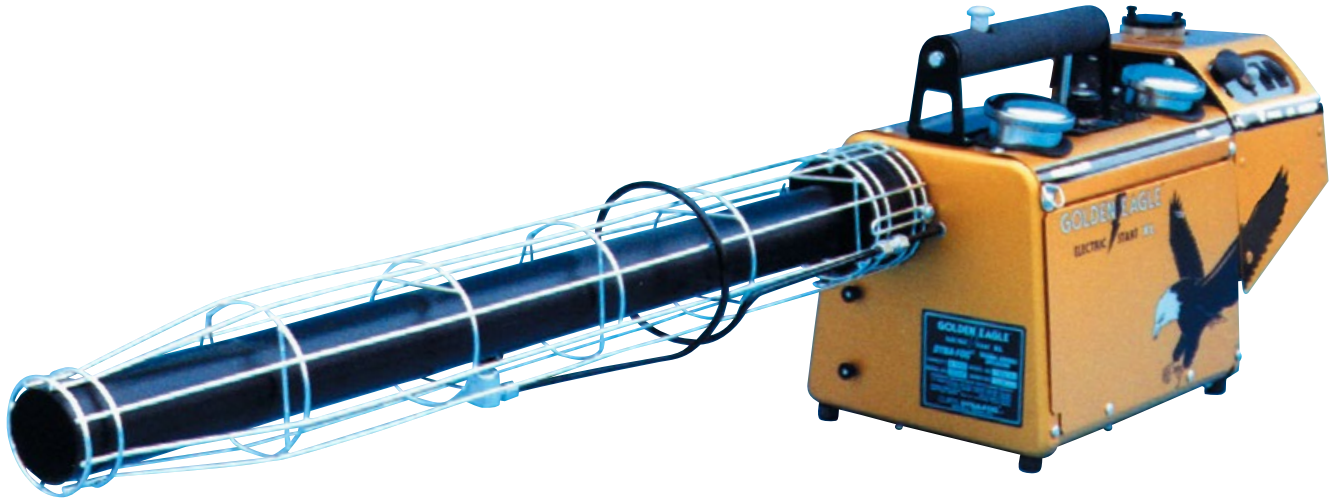


### FOGMASTER JR. UTILITY ULV FOGGER

- Control flying insects on patios and lawns, hotel room smoke odours, or apply BT or soap solutions to gardens. Ideal for misting water on cut flowers and interior foliage or for raising humidity in a room or hobby greenhouse. Perfect size and capacity for the homeowner.
- Easy to use - twist power head to remove tank and fill with your solution.
- Adjust fog output with rotary valve; 15 to 40-micron droplet size.
- 110-Volt power cord.
- 946 ml. (1 US quart) tank capacity.

PART	DESCRIPTION
FOGMASTER-JR	ULV Sprayer – 946 ml. tank

Thermal Foggers / ULV Applicators



**GOLDEN EAGLE™ THERMAL FOGGER**

The Golden Eagle Thermal Fogger easily, efficiently, and economically dispenses oil-based insecticides, fungicides, germicides, disinfectants, odour control, and other chemical products.

The Golden Eagle features a revolutionary new electric starting system to assure greater reliability, effectiveness, fuel efficiency, and ease of operation eliminating the need for manual starting.

No other machine surpasses the Golden Eagle's application capacity or its speed in completing difficult chemical application jobs at warehouses, factories, greenhouses, parks, campgrounds, cattle/swine/poultry operations, and much more.

**Specifications:**

- Formulation Output: Thermal aerosol fog, resonant pulse principle – 0 - 9 gallons / hour; 0.5 - 50 micron droplet size.
- Engine Performance: 30 HP, 22 KW.
- Fuel Consumption: 0.5 gallons / hour.
- Tank Capacities: 1.0 L Fuel, 4.2 L formulation.
- Power Supply: 8 x 1.5 V D-size alkaline batteries or auxiliary 12 V cigarette lighter adapter (supplied).
- Dimensions: 52" long x 9.5" wide x 14.5" high.
- Weight (empty): 8.6 kgs (19 lbs)
- Weight (full): 12.2 kgs (27 lbs)

PART	DESCRIPTION
GOLDEN	Golden Eagle Fogger



**TRUCK-MOUNT ULTRA LOW VOLUME APPLICATORS**

Curtis Dyna-Fog has been the world's leader in aerosol applicator technology with more than 30 years of design and manufacturing experience.

Offering a range of truck-mounted ULV applicators with flexibility in options such as pumps, engine brands, and radar or GPS speed sensing allow complete customizing to fit your needs. Curtis Dyna-Fog are manufactured with high quality components to ensure low maintenance costs and ease of use. ULV applicators are a cost-effective way to control environmental pests such as mosquitoes to help reduce insect borne diseases such as West Nile Virus.

Contact your Even-Spray Sales Representative for more details.



Typhoon 1 ULV Applicator shown

# Greenhouse Watering & Spray Equipment

**Dramm Corporation manufactures a complete line of professional greenhouse tools and equipment including hose-end watering tools, irrigation systems, chemical application equipment, and most recently, environmental controls. Dramm is the most respected name within the industry. Even-Spray stocks a wide range of Dramm watering equipment to meet your growing needs.**



### FOGG-IT NOZZLES

- Designed for misting seedlings or raising humidity.
- Female GH thread; volumes rated at 40 PSI.

PART	DESCRIPTION	PRICE(F)
FOGG	½ GPM Super Fine Nozzle	17.70
FOGGF	1 GPM Fine Nozzle	17.70
FOGGL	2 GPM Low Volume Nozzle	17.70
FOGGH	4 GPM High Volume Nozzle	17.70

*All Dramm watering products – shut-offs, extensions, breakers, and nozzles - are sold separately so that you can customize your equipment to your specifications!*



### DRAMM EXTENSION WANDS

- Light-weight aluminum w/ padded foam comfort grip.
- Female GH x Male GH Thread.

PART	DESCRIPTION	PRICE(F)
DRAMM50-80	50" – 80" Extendable Wand	46.50
DRAMM16	16" Extension Wand	13.65
DRAMM2	24" Extension Wand	15.00
DRAMM30	30" Extension Wand	16.40
DRAMM3	36" Extension Wand	17.10
DRAMM4	48" Extension Wand	18.45
DRAMMB-36	36" Hanging Basket Wand	17.75
DRAMMB-48	48" Hanging Basket Wand	19.10



### DRAMM HOSE-END ACCESSORIES

- Filter recommended for use with seedling nozzles.
- Ring protects 400, 750, 1000 series water breakers.

PART	DESCRIPTION	PRICE(F)
DRAMM-ILF175	Filter w/ 80 mesh screen	33.35
DRAMM-ILFE175	80 mesh screen only	11.20
DRAMM-ILFE080	Optional 200 mesh screen	11.20
400RING	Rubber protective ring	2.90



### WATER BREAKERS

- A wide range of water breakers to choose from.
- Female GH thread; volumes rated at 40 PSI.

PART	DESCRIPTION	PRICE(F)
400PL-RPR	Poly Breaker w/ Ring - 11gpm	11.35
400PL	Poly Breaker – 11gpm	8.70
400AL	Aluminum Breaker – 11gpm	28.85
750PL	Poly Breaker w/ Ring – 7gpm	21.85
1000PL	Poly Seedling Breaker – 7gpm	20.45
1000PL-N	Poly Seedling Breaker – 7gpm narrow pattern	20.45
1000PL-W	Poly Seedling Breaker – 7gpm wide pattern	20.45
170PL	Poly Breaker – 7gpm	7.35
170AL	Aluminum Breaker – 7gpm	19.30
480PL	Poly Seedling Breaker – 7gpm	10.40



### SEEDLING NOZZLE

- Designed for seedlings, cuttings, delicate plants.
- Hollow cone fine droplet pattern; GH

PART	DESCRIPTION	PRICE(F)
510C	Seeding Nozzle 1/2 GPM @ 40 PSI	13.20



### DRAMM WATERING CAN

- 5-Litre capacity; long-lasting rust-proof poly.
- Extra long spout with detachable brass rose.

PART	DESCRIPTION	PRICE(G)
DRAMMWATERCAN	5-Liter watering can	31.55



### Dramm Trigger Series Shut-Off Valves

- All valves feature Female GH inlets x Male GH Outlets with soft, yet durable rubber grips.
- 65C and 14700 rated at 11 GPM @ 40 PSI.
- 74800 rated at 16 GPM @ 40 PSI.

PART	DESCRIPTION	PRICE(F)
65C	Squeeze Trigger Valve – 11 gpm	24.10
14700	Easy Slide Thumb Valve – 11 gpm	25.65
74800	Easy Slide Thumb Valve – 16 gpm	28.50

# DRAMM



### SHUT-OFF VALVES

- All models feature Female GH x Male GH thread.
- 74VALVE, 300, 075HGB Valves – full port flow.

PART	DESCRIPTION	PRICE(F)
74VALVE	Dramm HD Poly Valve	26.80
300	Dramm Brass Valve	35.20
075HGB	Brass GH x GH Valve	CALL
DRAMMVALVE-QAV	Dramm Poly Valve	8.45



### MS20-100 CHEMICAL SPRAYER

- Includes 100' hose, Gun, Cart/Tank, & Hose Reel.
- Up to 0.5 GPM; Maximum pressure to 500 PSI.

PART	DESCRIPTION	PRICE(I)
MS20-100	20 Gallon Hydraulic Sprayer 120V	CALL