



THE COMET ADVANTAGE

For over 60 years, Comet has been a global trailblazer in the world-wide pump market - available in over 130 countries. Comet – leading the way in solutions and new concepts to the world of fluid transfer applications.

APS SERIES HIGH-PRESSURE DIAPHRAGM PUMPS

- **LOW MAINTENANCE** – Durable for less down time; over-sized bearings, forge-reinforced shafts and holding brackets.
- **GROUND-BREAKING TECHNOLOGY** – “Perfect Bore-Stroke Ratio”; minimal operating noise, superior priming capacity.
- **COMPACT DESIGN** – Quick installation in the smallest spaces.
- **VERSATILITY** – Wide range of flow options to fit your needs for Pest Control, Lawn Care, and Agricultural Spraying.

MC/MP SERIES MEDIUM-PRESSURE DIAPHRAGM PUMPS

- **OUTSTANDING MATERIALS** – Plastic-coated aluminum heads, stainless steel polymer check valves, polymer manifolds. NBR® / Desmopan® diaphragms.
- **EXTREME CHEMICAL RESISTANCE** – Unrivaled material durability; long-lasting performance with even the toughest of chemical applications.
- **PERFORMANCE** - Innovative fluid slot design to optimize flow rates, shut-off speed, and priming capacity.
- **VERSATILITY** – Wide range of flow options to fit Lawn Care, Industrial, and Agricultural Spraying applications.

BP SERIES LOW-PRESSURE DIAPHRAGM PUMPS

- **LOW MAINTENANCE / HIGH PERFORMANCE** – Innovative design to optimize flow rates, shut-off speed, and priming capacity. Over-sized diaphragms and reduced pistons strokes. Less down time.
- **OUTSTANDING MATERIALS** – Plastic-coated aluminum heads, stainless steel polymer check valves, polymer manifolds. NBR® / Desmopan® diaphragms.
- **MODULARITY** – Modular flexibility; couple multiple pumps together for higher flow rates or to tackle multi-purpose applications.
- **VERSATILITY** – Wide range of flow options to fit your needs for Pest Control, Lawn Care, and Agricultural Spraying.



APS41	0 PSI			290 PSI		435 PSI		580 PSI	
RPM	GPM	HP	GPM	HP	GPM	HP	GPM	HP	
400	7.9	0.3	7.7	1.6	7.5	2.3	7.3	2.9	
450	8.9	0.3	8.6	1.7	8.4	2.6	8.2	3.3	
500	9.8	0.4	9.6	1.9	9.4	2.8	9.1	3.7	
550	10.8	0.4	10.6	2.1	10.3	3.1	10.0	4.1	

COMET APS 41 SERIES HIGH-PRESSURE DIAPHRAGM PUMP

- Semi-Hydraulic, three diaphragm pump.
- Maximum 580 PSI & 10.8 GPM; Maximum 550 RPM and 4.1 HP.
- Anodized Aluminum Pump construction; 28 Pounds.

PART	DESCRIPTION
COM-APS41GR	Pump with ¾" solid shaft gearbox and adjustable regulator
5026.0245.00	NBR® Repair Kit
5026.0327.00	Desmopan® Repair Kit



APS51	0 PSI			290 PSI		435 PSI		580 PSI	
RPM	GPM	HP	GPM	HP	GPM	HP	GPM	HP	
400	10.4	0.4	10.2	2.2	10.1	3.1	9.6	3.8	
450	11.7	0.5	11.5	2.5	11.4	3.4	10.9	4.2	
500	12.9	0.5	12.6	2.7	12.4	3.8	12.2	4.8	
550	14.2	0.6	13.8	3.0	13.7	4.2	13.4	5.2	

COMET APS 51 SERIES HIGH-PRESSURE DIAPHRAGM PUMP

- Semi-Hydraulic, three diaphragm pump.
- Maximum 580 PSI & 14.2 GPM; Maximum 550 RPM and 5.2 HP.
- Anodized Aluminum Pump construction; 44 Pounds.

PART	DESCRIPTION
COM-APS51GR5	Pump with ¾" hollow shaft gearbox and adjustable regulator
COM-APS51GR8	Pump with 1" hollow shaft gearbox and adjustable regulator
5026.0084.00	NBR® Repair Kit
5026.0084.00.DS	Desmopan® Repair Kit



APS71	0 PSI			290 PSI		435 PSI		580 PSI		725 PSI	
RPM	GPM	HP	GPM	HP	GPM	HP	GPM	HP	GPM	HP	
400	14.0	0.5	13.7	2.9	13.4	4.0	13.3	5.2	13.2	6.5	
450	15.6	0.6	15.3	3.3	15.0	4.6	14.9	5.9	14.7	7.3	
500	17.2	0.8	16.8	3.7	16.5	5.2	16.3	6.7	16.2	8.3	
550	18.8	0.9	18.4	4.1	18.1	5.7	17.9	7.3	17.8	9.1	

APS 71 SERIES HIGH-PRESSURE DIAPHRAGM PUMP

- Semi-Hydraulic, three diaphragm pump.
- Maximum 725 PSI & 18.8 GPM; Maximum 550 RPM and 9.1 HP.
- Anodized Aluminum Pump construction; 49 Pounds (w/ gearbox and regulator).

PART	DESCRIPTION
COM-APS71	Pump Only w/ 6-hole flange
COM-APS71GR8	Pump with 1" hollow shaft gearbox and adjustable regulator
5026.0085.00	NBR® Repair Kit
5026.0331.00	Desmopan® Repair Kit



MC25	0 PSI		72 PSI		145 PSI		217 PSI		290 PSI		362 PSI	
RPM	GPM	HP	GPM	HP	GPM	HP	GPM	HP	GPM	HP	GPM	HP
400	3.6	0.12	3.0	0.18	3.0	0.36	2.9	0.54	2.9	0.71	2.9	0.89
500	4.3	0.15	3.8	0.23	3.7	0.46	3.7	0.68	3.6	0.89	3.6	1.11
600	5.3	0.18	4.6	0.28	4.5	0.55	4.5	0.82	4.4	1.08	4.4	1.35
650	6.1	0.20	5.2	0.32	5.0	0.62	5.0	0.91	4.9	1.20	4.9	1.50

COMET MC 25 SERIES MEDIUM-PRESSURE DIAPHRAGM PUMP

- Semi-Hydraulic, twin diaphragm pump.
- Maximum 362 PSI & 6.1 GPM; Maximum 550 RPM and 1.5 HP.
- Anodized Aluminum Pump construction; 12 Pounds (w/ hyd. drive and regulator).

PART	DESCRIPTION
COM-MC25P	Pump w/ 10" 2A Groove Pulley and adjustable regulator
COM-MC25GR	Pump w/ 3/4" Hydraulic Drive and adjustable regulator
5026.0116.0 0	NBR® Rebuild Kit
5026.0116.00.DS	Desmopan® Rebuild Kit



BP 125	0 PSI		72 PSI		145 PSI		217 PSI		290 PSI	
RPM	GPM	HP	GPM	HP	GPM	HP	GPM	HP	GPM	HP
400	24.0	1.0	23.8	1.6	23.2	2.9	23.0	4.0	22.7	5.0
450	26.9	1.2	26.4	1.9	26.2	3.2	25.9	4.4	25.6	5.4
500	29.6	1.6	29.1	2.3	28.8	3.7	28.5	4.8	28.3	6.1
550	32.0	2.0	31.7	2.7	31.4	4.1	31.2	5.5	30.9	6.8

COMET BP 125 SERIES LOW-PRESSURE DIAPHRAGM PUMP

- Semi-Hydraulic, three diaphragm pump.
- Maximum 290 PSI & 32 GPM; Maximum 550 RPM and 6.8 HP.
- Plastic-coated Aluminum Pump construction; 34 Pounds w/ gearbox.

PART	DESCRIPTION
COM-BP125S	Pump with 1 3/8" splined shaft
COM-BP125GR	Pump with 1" hollow shaft gearbox
5026.0326.00	Desmopan® Rebuild Kit



MP 30	0 PSI		145 PSI		290 PSI		435 PSI	
RPM	GPM	HP	GPM	HP	GPM	HP	GPM	HP
400	6.2	0.2	5.7	0.7	5.6	1.2	5.6	1.7
450	6.9	0.3	6.4	0.8	6.3	1.4	6.3	1.9
500	7.7	0.3	7.1	0.8	7.0	1.5	7.0	2.1
550	8.5	0.3	7.8	0.9	7.7	1.7	7.7	2.3

COMET MP 30 SERIES MEDIUM-PRESSURE DIAPHRAGM PUMP

- Semi-Hydraulic, twin diaphragm pump.
- Maximum 435 PSI & 8.5 GPM; Maximum 550 RPM and 2.3 HP.
- Anodized Aluminum Pump construction; 21 Pounds (w/ gearbox and regulator).

PART	DESCRIPTION
COM-MP30GR	Pump with 3/4" hollow shaft gearbox and adjustable regulator
5026.0080.00	NBR® Rebuild Kit



BP 171	0 PSI		72 PSI		145 PSI		217 PSI		290 PSI	
RPM	GPM	HP	GPM	HP	GPM	HP	GPM	HP	GPM	HP
400	32.3	1.3	31.7	2.6	31.5	4.1	31.3	5.2	31.1	6.7
450	36.4	1.5	35.7	2.9	35.5	4.6	35.2	6.1	35.0	7.6
500	40.3	1.8	39.6	3.5	39.4	5.2	39.1	6.8	38.8	8.6
550	44.4	2.0	43.6	4.1	43.3	5.9	43.1	7.8	42.8	9.6

COMET BP 171 SERIES LOW-PRESSURE DIAPHRAGM PUMP

- Semi-Hydraulic, four diaphragm pump.
- Maximum 290 PSI & 44.4 GPM; Maximum 550 RPM and 9.6 HP.
- Plastic-coated Aluminum Pump construction; 52.9 Pounds.

PART	DESCRIPTION
COM-BP171SPL	Pump with 1 3/8" splined shaft
5026.0145.00	Desmopan® Rebuild Kit

Gas Engine Powered Pumps



WP-2065HL GENERAL PURPOSE 2" WATER PUMP

- 2" NPT inlet and outlet Aluminum Pump.
- Honda GX200 6.5HP engine with Oil Alert.
- 158 gallons per minute Maximum Flow.
- 82' Total Lift.
- Solids through pump not recommended.

PART	DESCRIPTION
WP-2065HL	2" Water Pump w/ Honda



WP-3065HL GENERAL PURPOSE 3" WATER PUMP

- 3" NPT inlet and outlet Aluminum Pump.
- Honda GX200 6.5HP engine with Oil Alert.
- 264 gallons per minute Maximum Flow.
- 85' Total Lift.
- Solids through pump not recommended.

PART	DESCRIPTION
WP-3065HL	3" Water Pump w/ Honda



4" WATER TRANSFER PUMP W/ HONDA GX390 ENGINE

- 4" male NPT inlet and outlet ports.
- Aluminum casing and H.D. Cast Iron impeller.
- 422 GPM maximum flow.
- 26' suction lift, 98' total lift.
- Honda 389cc engine features 6.8 litre fuel tank, recoil start, and low oil alert.

PART	DESCRIPTION
WP-4013HR	4" Water Pump w/ Honda



1" WATER TRANSFER PUMP W/ POWEREASE 79CC ENGINE

- 1" male NPT inlet and outlet ports.
- Aluminum impeller and casing.
- 42 GPM maximum flow.
- 20' suction lift, 85' total lift.
- Powerease engine features 2 litre fuel tank, recoil start, and low oil shutdown protection.

PART	DESCRIPTION
WP-1020R	1" Water Pump w/ Powerease



WP-2070S 2" WATER PUMP

- 2" NPT inlet and outlet Aluminum Pump.
- Powerease 210CC engine with Oil Alert.
- 158 gallons per minute Total Flow.
- 82' Total Lift.
- Solids through pump not recommended.

PART	DESCRIPTION
WP-2070S	2" Pump w/ 210 CC engine



WP-3070S 3" WATER PUMP

- 3" NPT inlet and outlet Aluminum Pump.
- Powerease 7HP engine with Oil Alert.
- 264 gallons per minute Total Flow.
- 85' Total Lift.
- Solids through pump not recommended.

PART	DESCRIPTION
WP-3070S	3" Pump w/ 7 HP engine



HP-2065HR HIGH PRESSURE 2" TRANSFER PUMP

High pressure system operates at 65 PSI; ideal for lawn sprinkling and fire fighting.

- 2" NPT inlet and outlet Aluminum Pump.
- Honda GX200 6.5HP engine with Oil Alert.
- 126 gallons per minute Maximum Flow.
- 197' Total Lift (@ 85 PSI).
- Solids through pump not recommended.

PART	DESCRIPTION
HP-2065HR	2" High Pressure Pump



TP-3013HM 3" TRASH PUMP

- 3" NPT inlet and outlet Aluminum Pump.
- Honda GX390 13HP engine with Oil Alert.
- 286 gallons per minute Maximum Flow.
- 98' Total Lift.
- Handles solids up to 1" diameter through pump.

PART	DESCRIPTION
TP-3013HM	3" Trash Pump w/ Honda



TP-4013HM 4" TRASH PUMP

- 4" NPT inlet and outlet Aluminum Pump.
- Honda GX390 13HP engine with Oil Alert.
- 506 gallons per minute Maximum Flow.
- 95' Total Lift.
- Handles solids up to 1" diameter through pump.

PART	DESCRIPTION
TP-4013HM	4" Trash Pump w/ Honda

Gas Engine Powered Pumps



2" HIGH PRESSURE/FIREFIGHTING PUMP W/ POWEREASE 210CC ENGINE

- 2" male NPT inlet and outlet ports.
- Aluminum impeller and casing.
- 126 GPM maximum flow, 85 PSI Outlet Pressure.
- 26' suction lift, 197' total lift.
- Powerease engine features 3.6 litre fuel tank, recoil start, and low oil shutdown protection.

PART	DESCRIPTION
HP-2070R	2" HP Pump w/ Powerease



2" HIGH PRESSURE PUMP W/ HONDA GX390 ENGINE

- 2" male NPT inlet and outlet ports.
- Heavy Duty Aluminum impeller & Aluminum casing.
- 140 GPM maximum flow; 145 PSI Outlet Pressure.
- 26' Suction lift, 330' total lift.
- Honda GX390 (389cc) engine features recoil start, low oil alert, and 6.8L (1.8 USG) fuel tank capacity.

PART	DESCRIPTION
HP-2013HR	2" HP Pump w/ Honda



2" SEMI-TRASH PUMP W/ HONDA GX200 ENGINE

- 2" male NPT inlet and outlet ports.
- 125 GPM maximum flow.
- 26' suction lift, 82' total lift.
- Handles up to 5/8" solids.
- Honda 196cc engine features 3.1 litre fuel tank, recoil start, and low oil alert.

PART	DESCRIPTION
TP-2065HT	2" Semi-Trash Pump w/ Honda



SUCTION HOSE ASSEMBLY – "C" CAMLOCK X MNPT

Our standard, general-purpose PVC suction hose. It is flexible, lightweight, non-marking, and resistant to mild chemical solutions. Assemblies come with a "C" Female Cam-lock and galvanized MNPT nipple.

- 20-foot hose length.
- Fittings secured with double band clamps.

PART	DESCRIPTION
PVCS112CM20	1½" Suction Hose Assembly
PVCS2CM20	2" Suction Hose Assembly
PVCS3CM20	3" Suction Hose Assembly
PVCS4CM20	4" Suction Hose Assembly
PVCS6CM20	6" Suction Hose Assembly



HEAVY DUTY BRONZE FOOT VALVE

- Includes perforated stainless-steel strainer.

PART	DESCRIPTION
FV100	Bronze Foot Valve 1" FNPT
FV112	Bronze Foot Valve 1½" FNPT
FV200	Bronze Foot Valve 2" FNPT
FV300	Bronze Foot Valve 3" FNPT
FV400	Bronze Foot Valve 4" FNPT

Other sizes available; please inquire.



3" SEMI-TRASH PUMP W/ HONDA GX200 ENGINE

- 3" male NPT inlet and outlet ports.
- 264 GPM maximum flow.
- 26' suction lift, 85' total lift.
- Handles up to 1" solids.
- Honda 196cc engine features 3.1 litre fuel tank, recoil start, and low oil alert.

PART	DESCRIPTION
TP-3065HR	3" Semi-Trash Pump w/ Honda



LAY-FLAT HOSE ASSEMBLY – "C" & "E" CAMLOCKS

Assemblies are lightweight, economical PVC hoses that flatten and roll up tightly when not in use. designed for applications where external abuse is limited. Used widely for irrigation, construction, flood protection, and municipal applications.

- Assemblies are supplied with female "C" and male "E" aluminum cam-locks.
- Fittings secured with double band clamps.
- Available in 50-foot and 100-foot lengths.

PART	DESCRIPTION
PVCL112CE50	1½" x 50' Lay-flat Assembly
PVCL2CE50	2" x 50' Lay-flat Assembly
PVCL3CE50	3" x 50' Lay-flat Assembly
PVCL4CE50	4" x 50' Lay-flat Assembly
PVCL6CE50	6" x 50' Lay-flat Assembly
PVCL112CE100	1½" x 100' Lay-flat Assembly
PVCL2CE100	2" x 100' Lay-flat Assembly
PVCL3CE100	3" x 100' Lay-flat Assembly
PVCL4CE100	4" x 100' Lay-flat Assembly
PVCL6CE100	6" x 100' Lay-flat Assembly



PVC FOOT VALVES

PART	DESCRIPTION
FVPVC1000	PVC Foot Valve 1" FNPT
FVPVC1500	PVC Foot Valve 1½" FNPT
FVPVC2000	PVC Foot Valve 2" FNPT
FVPVC3000	PVC Foot Valve 3" FNPT

Other sizes available; please inquire.



4" TRASH PUMP W/ POWEREASE 420CC ENGINE

- 4" male NPT inlet and outlet ports.
- Cast Iron impeller and aluminum casing.
- 580 GPM max. flow; 26' suction lift, 95' total lift.
- Handles up to 1" solids.
- Powerease engine features 3.6 litre fuel tank, recoil start, and low oil shutdown protection.

PART	DESCRIPTION
TP-4015RM	4" Trash Pump w/ Powerease

Poly Pumps **HYPRO**



1542P-5SP 2" POLY PUMP

- Features 5-Vane impeller and 6.5 HP PowerPro engine.
- EPDM mechanical seal and inlet valve.
- Low oil sensor on engine.
- Maximum suction lift of 25 feet.
- 2" Female NPT inlet and outlet ports.

PART	DESCRIPTION
1542P-5SP	2" Poly Pump (5-vane) w/ 6.5 HP PowerPro engine
3430-0690	Pump head kit for 1542P-3SP
3430-0691	Pump head kit for 1542P-5SP (unassembled)
3430-0635	Seal kit for 1542P-3SP / 1542P-5SP pumps



3" FNPT Inlet/Outlet



3" Manifold Inlet/Outlet

1543P SERIES 3" POLY PUMPS

- Three models powered by EPA 13.0 HP PowerPro engines – pull or electric start.
- 1543P-130ESP-01 model features 3" Manifold Inlet and Outlet ports.
- Self-priming pumps with a maximum lift of 25 feet.
- EPDM mechanical seal and inlet valve.

PART	DESCRIPTION
1543P-130ESP	3" Poly Pump w/ 13.0 HP PowerPro engine – Electric
1543P-130ESP-01	3" Poly Pump w/Manifold Inlet/Outlet and 13.0 HP PowerPro engine – Electric start
3430-0692	Pump head kit for 1543P pumps (unassembled)
3430-0757	Seal kit for 1543P series pumps
3430-0758	SHIM kit for 1543P pump and 3430-0693 KIT

1542P / 1543P SERIES PUMPS – PERFORMANCE (US GALLONS)

MODEL	GPM @ 0 PSI	GPM @ 10 PSI	GPM @ 20 PSI	GPM @ 30 PSI	GPM @ 40 PSI	GPM @ 50 PSI	GPM @ 58 PSI
1542P-5SP	200	182	162	136	106	65	0
1543P-90ESP	373	343	291	231	156	53	0
1543P-130ESP	440	400	338	269	184	68	0



9342P & 9343P SERIES HYDRAULICALLY-DRIVEN POLY PUMPS

- Polypropylene Housing with either 2" Female NPT or 3" Female NPT ports.
- 2" models – Up to a Maximum 206 GPM / 60 PSI. See performance chart below.
- 2" models – Up to a Maximum 484 GPM / 58 PSI. See performance chart below.
- Pump Seals – EPDM Mechanical.
- Suction Lift – Maximum 25 feet.
- Poly impeller with Stainless Steel insert.

PART	DESCRIPTION
9342P-HM1C-5SP	2" Hydraulic Poly Pump – 10 GPM motor capacity
9342P-HM5C-5SP	2" Hydraulic Poly Pump – 13 GPM motor capacity
9343P-GM6-SP	3" Hydraulic Poly Pump – 8 to 11 GPM motor capacity
9343P-GM10-SP	3" Hydraulic Poly Pump – 12 to 16 GPM motor capacity

9342 SERIES 2" PUMP PERFORMANCE

9342P-HM1C-5SP							
Hyd. Flow GPM	GPM @ 0 PSI	GPM @ 10 PSI	GPM @ 20 PSI	GPM @ 30 PSI	GPM @ 40 PSI	GPM @ 50 PSI	GPM @ 58 PSI
8	165	145	122	95	57	-	-
9	185	166	144	119	86	0	-
10	200	184	164	141	114	80	0

9342P-HM5C-5SP							
Hyd. Flow GPM	GPM @ 0 PSI	GPM @ 10 PSI	GPM @ 20 PSI	GPM @ 30 PSI	GPM @ 40 PSI	GPM @ 50 PSI	GPM @ 60 PSI
9	175	154	123	84	0	-	-
10	192	174	149	118	76	0	-
11	206	189	169	145	117	79	0

9343 SERIES 3" PUMP PERFORMANCE

9343P-GM6-SP													
Performance	Feet	0	12	23	35	46	58	69	81	92	104	116	127
	PSI	0	5	10	15	20	25	30	35	40	45	50	55
8 Gal/Min	GPM	342	316	284	240	176	67	-	-	-	-	-	-
9 Gal/Min	GPM	378	355	327	294	252	194	103	-	-	-	-	-
10 Gal/Min	GPM	414	394	371	345	314	276	227	155	52	-	-	-
11 Gal/Min	GPM	450	433	414	392	368	340	307	265	210	128	28	-

9343P-GM10-SP													
Performance	Feet	0	12	23	35	46	58	69	81	92	104	116	127
	PSI	0	5	10	15	20	25	30	35	40	45	50	55
12 Gal/Min	GPM	364	340	310	274	227	157	46	-	-	-	-	-
13 Gal/Min	GPM	391	368	342	312	275	227	158	55	-	-	-	-
14 Gal/Min	GPM	415	395	373	348	318	282	236	170	74	-	-	-
15 Gal/Min	GPM	445	426	406	383	357	327	292	247	187	102	7	-
16 Gal/Min	GPM	484	466	446	425	401	374	344	309	266	211	139	47

9243P-SP 3" POLY PEDESTAL PUMP

- 3" Female NPT inlet and outlet ports.
- 1" keyed shaft; requires 12 HP motor to achieve maximum performance.
- 460 GPM maximum volume; 54 PSI maximum pressure.
- Maximum suction lift of 25 feet; maximum total head of 125 feet.
- Pump Seals – EPDM Mechanical.
- Poly impeller with Stainless Steel insert.



PART	DESCRIPTION
9243P-SP	3" Poly Pedestal Pump w/ 1" keyed shaft

9243P-SP PERFORMANCE CHART

PSI	Feet*	2900 RPM		3200 RPM		3500 RPM	
		GPM	HP	GPM	HP	GPM	HP
0	0	380	7.1	424	9.1	460	12.2
5	12	358	6.8	405	8.9	445	11.8
10	23	342	6.5	384	8.7	425	11.4
15	35	312	6.3	359	8.5	404	11.1
20	46	275	6.0	331	8.3	379	10.9
25	58	224	5.6	297	8.0	353	10.6
30	69	160	5.0	251	7.5	321	10.2
35	81	50	4.2	193	7.0	280	9.8
40	92	-	-	103	6.2	227	9.2
45	104	-	-	0	5.3	159	8.5
50	116	-	-	-	-	70	7.5



3" Model Shown

BANJO 2" AND 3" POLY PUMPS W/ HONDA ENGINES

- EPDM seals and gaskets.
- Female NPT inlet and outlet ports.
- Poly 5-Vane impeller on 2" model and poly 4-Vane impeller on 3" model; poly casing on both models.
- 2" Model features Honda GX 5.5 HP engine and 3" model features Honda GX 6.5 HP engine.
- Both engines include low oil sensor.

PART	DESCRIPTION
200PH5	2" Banjo Poly Pump w/ 5.5 HP
300PH6	3" Banjo Poly Pump w/ 6.5 HP



BANJO 2" AND 3" POLY PUMPS W/ 6.5 HP BRIGGS & STRATTON ENGINES

- EPDM seals and gaskets
- Available in either 2" or 3" Female NPT Inlet and outlet ports.
- Powered by a 6.5 HP Briggs & Stratton engine with pull start and oil alert.
- 216 US gallons per minute maximum.

PART	DESCRIPTION
200P6PRO	2" Banjo Poly Pump w/ 6.5 HP Briggs & Stratton Engine
300P6PRO	3" Banjo Poly Pump w/ 6.5 HP Briggs & Stratton Engine



1537 PUMP

- Unit includes pump, engine and base.
- Honda 5.5 HP oil alert engine and Hypro 1538 pump.
- 1 1/2" inlet, 1 1/4" outlet.
- Nylon impeller.
- 82 GPM @ 40 PSI, 70 GPM @ 50 PSI, 50 GPM @ 60 PSI.

PART	DESCRIPTION
1537	Pump/Engine – Honda 5.5HP
1537-U	Pump, Honda - Unassembled



NEW!

BANJO 3" M350 SELF-PRIMING CENTRIFUGAL POLY PUMP

- New **FastFlow™** technology diffuser design increases flow rate of pump.
- Capable of flow rates over 500 GPM.
- Tandem wet seal design; run-dry capable in excess of one hour. Handles up to 1/2" suspended solids.
- Poly pump w/ EPDM seals & S.S. hardware.
- Mates with a 1" keyed shaft engine (min. 13HP).
- Can be plumbed to 4" hose for maximum GPM performance.

PART	DESCRIPTION
M350POW	3" Banjo Self-Priming Centrifugal Pump



2" Model Shown

BANJO 2" AND 3" FULL PORT MANIFOLD POLY PUMPS W/ HONDA GX SERIES ENGINES

- EPDM seals and gaskets.
- Full Port Manifold inlet and outlet ports.
- Precision molded construction
- 2" Model features Honda GX 5.5 HP engine and 3" model features Honda GX 6.5 HP engine.
- Both engines include low oil sensor.

PART	DESCRIPTION
M220PH5	2" Banjo Poly Pump w/ 5.5 HP
M300PH6	3" Banjo Poly Pump w/ 6.5 HP



ACE GE660 PUMP

- Ace 5 1/2 HP Honda
- 1 1/2" inlet
- 1 1/4" outlet
- 6" impeller mounts to 3/4" shaft
- 110 GPM @ 20 PSI @ 3400 RPM
- 49 GPM @ 60 PSI @ 3400 RPM

PART	DESCRIPTION
GE660	Pump/Engine – Honda 5.5HP
GE660-U	Pump, Honda - Unassembled



POLY CHECK VALVE

- 2" or 1 1/2".
- Available with or without check valve.

PART	DESCRIPTION
FVPP2	2" Strainer C/W Check
FVPP2LC	2" Strainer Less Check
100750	2" NPT Female x Hose Insert
504019	2" Check Valve
2452067	2" NPT Female x 1 1/2" NPT Male Adapter
100640	1 1/2" NPT Female x 1 1/2" Hose Insert



METAL STRAINER

- NPT female threads.

PART	DESCRIPTION
SUCTION2	2" FPT Steel Strainer
SUCTION3	3" FPT Steel Strainer
SUCTION4	4" FPT Steel Strainer



FLOATING FILTER

- 2" hose connection.
- Floats just below water level.
- Keeps suction hose off bottom.

PART	DESCRIPTION
FLOAT	2" Floating Pond Filter

Pumps and Foot Valves



TrunkPump turns pumping into an easy one-person job and saves time, money and labour because your tractor does all the hard work.

The **TP-2PTP** high-pressure self-priming pump is designed specifically irrigation or high head / pressure applications where moderate volume is required.

Other TrunkPump models available for water transfer / dewatering applications.



TP-2PTP 2" HIGH PRESSURE PUMP

- Die Cast, Self-priming PTO-powered centrifugal Aluminum Pump
- 120+ GPM; 18 feet' of suction head, 88 PSI (75 PSI @ 30 GPM)
- Silicone Carbide seal
- Heavy-duty steel construction.

PART	DESCRIPTION
TP-2PTP	2" HP PTO-Pump



HUNTER® PSR-22 PUMP START RELAY

A reliable and economical pump start relay for irrigation systems with an electric pump that require pump activation at the controller. Suitable for conventional wiring or 2-wire decoder activation; allows for flexible installation options.

- Lockable, All-weather Enclosure
- 24VAC flying leads makes connection to the controller quick and easy.
- Single Phase 2HP @ 110VAC; 3HP @ 230VAC
- Dimensions: 6½" H x 7½" W x 4½" D

PART	DESCRIPTION
PSR-22	Pump Start Relay – single phase

NOTE: Other models available – please inquire.



HP-2065HR HIGH PRESSURE 2" TRANSFER PUMP

High pressure system operates at 65 PSI; ideal for lawn sprinkling and fire fighting.

- 2" NPT inlet and outlet Aluminum Pump.
- Honda GX200 6.5HP engine with Oil Alert.
- 126 gallons per minute Maximum Flow.
- 197' Total Lift (@ 85 PSI).
- Solids through pump not recommended.

PART	DESCRIPTION
HP-2065HR	2" High Pressure Pump



HP-2013HR HIGH PRESSURE 2" TRANSFER PUMP

The HP-2013HR pump with Honda engine is an excellent choice

- for irrigation or as a firefighting pump.
- 2" Male NPT inlet and outlet Aluminum Pump.
- Honda GX390 13HP engine with Oil Alert.
- 140 gallons per minute Maximum Flow.
- 330' Total Lift (@ 145 PSI).
- Solids through pump not recommended

PART	DESCRIPTION
HP-2013HR	2" High Pressure Pump



PVC FOOT VALVES

PART	DESCRIPTION
FVPVC0750	¾"
FVPVC1000	1"
FVPVC1250	1¼"
FVPVC1500	1½"
FVPVC2000	2"
FVPVC3000	3"



HEAVY DUTY BRONZE FOOT VALVE

- Includes perforated stainless steel strainer.

PART	DESCRIPTION
FV034	¾"
FV100	1"
FV114	1¼"
FV112	1½"
FV200	2"
FV300	3"
FV400	4"



Foot Valve



Leather Flapper

CAST IRON FOOT VALVES

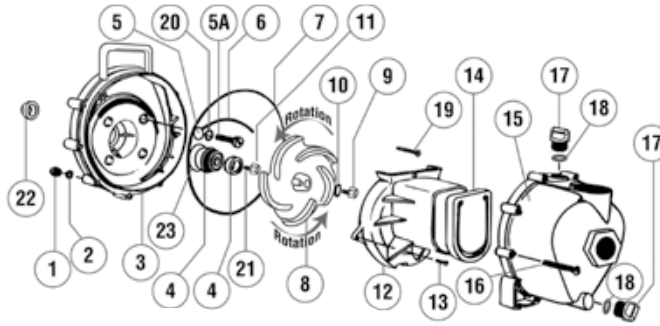
PART	DESCRIPTION
FVCI-2	2" Foot Valve
FVCI-3	3" Foot Valve
FVCI-4	4" Foot Valve
LEATHER2	2" Leather Flapper
LEATHER3	3" Leather Flapper
LEATHER4	4" Leather Flapper
LEATHER6	6" Leather Flapper



POLY CHECK VALVE

- 2" or 1½".
- Available with or without check valve.

PART	DESCRIPTION
FVPP2	2" Strainer C/W Check
FVPP2LC	2" Strainer Less Check
100750	2" NPT Female x Hose Insert
504019	2" Check Valve
2452067	2" NPT Female x 1½" NPT Male Adapter
100640	1½" NPT Female x 1½" Hose Insert

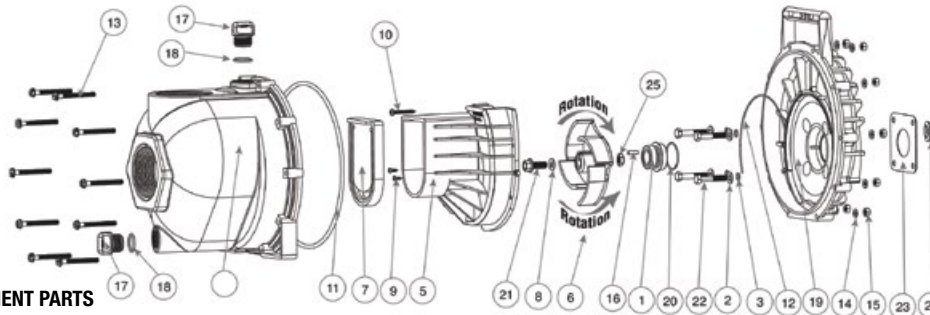


2" BANJO POLY PUMP REPLACEMENT PARTS

N/S = Not Shown

REF	PART	DESCRIPTION	REQ'D
1	V07019	SS Body Nuts	10
2	V07018	SS Lock Washers	10
3	12703A	Poly Pump Rear Bracket	1
4	12713	Seal Assembly	1
4	12713V	FKM (viton type) Seal Assembly w/316 SS Cup and Spring	1
5	12717	O-Ring for Screw Head	4
5	12717V	FKM (viton type) O-Ring for Screw Head	2
5A	12715A	SS Bracket Screws	4
6	12754	O-Ring Segment	1
6	12754V	FKM (viton type) O-Ring Segment	1
7	12719A	Body O-Ring	1
7	12719AV	FKM (viton type) Body O-Ring	8
8	12772	5 Vane Impeller	1
9	12765A	SS Impeller Bolt	1
10	12774VA	Impeller Bolt Gasket	1
11	12775A	Impeller Hex Nut	1
12	12702A	Poly Pump Volute	1
13	12725	SS Volute Screws	2
14	12705	Poly Pump Check Valve	1
14	12705V	FKM (viton type) Pump Check Valve	1

REF	PART	DESCRIPTION	REQ'D
15	12712A	Body Assembly	1
16	12720	SS Body Screws	10
17	12777	Prime/Drain Plug	2
18	UV15163	Prime/Drain Plug O-Ring	2
18	UV15163V	FKM (viton type) Prime/Drain Plug O-Ring	1
19	12900	SS Upper Volute Screw	4
20	12901	SS Rear Bracket Washer	1
21	12902A	Impeller Key	1
22	12716	Poly Pump Slinger	1
23	12710	O-Ring for Seal Assembly	1
23	12710V	FKM (viton type) O-Ring for Seal Assembly	1
N/S	12882A	Bearing Pedestal	1
N/S	12099	7/16" - 14 x 1.25" HHCS	1
N/S	12000A	5 Vane Impeller Repair Kit - includes REF 4 - 8, 10, 14, 18, 22, 23, & 12099	
N/S	12000AV	FKM (viton like) Impeller Repair Kit - includes REF 4-8, 10, 14, 18, 22, 23, & 12099	1
N/S	12999A	Pump Seal/O-Ring Kit - includes REF 4 - 7, 10, 18, 22, 23 & 12099	



3" BANJO POLY PUMP REPLACEMENT PARTS

N/S = Not Shown

REF	PART	DESCRIPTION	REQ'D
1	12713	Seal Assembly	1
1	12713V	FKM (viton Type) Seal Assembly w/316 SS Cup & Spring	1
2	12901	SS Rear Bracket Washer	1
3	12717	O-Ring for Screw Head	4
3	12717V	FKM (viton type) O-Ring for Screw Head	2
4	13712	Body Assembly	1
5	13702	Poly Pump Volute	1
6	13771	4 Vane Impeller	1
7	12705	Poly Pump Check Valve	1
7	12705V	FKM (viton type) Pump Check Valve	1
8	12774VA	Impeller Bolt Gasket	1
9	12900	SS Upper Volute Screw	4
10	12725	SS Volute Screws	2
11	12719A	Body O-Ring	1
11	12719AV	FKM (viton type) Body O-Ring	8
12	12754	O-Ring Segment	1
12	12754V	FKM (viton type) O-Ring Segment	1
13	12720	SS Body Screws	10
14	V07018	SS Locker Washers	10
15	V07019	SS Body Nuts	10
16	12902A	Impeller Key	1

REF	PART	DESCRIPTION	REQ'D
17	13777	Prime/Drain Plug	2
18	13778	Prime/Drain Plug O-Ring	2
18	13778V	FKM (viton type) Prime/Drain Plug O-Ring	2
19	12703A	Poly Pump Rear Bracket	1
20	12710	O-Ring for Seal Assembly	1
20	12710V	FKM (viton type) O-Ring for Seal Assembly	1
21	12765A	SS Impeller Bolt 5/16 x 24 x 1.12 (300PH-6)	1
21	13765	SS Impeller Bolt 3/8 x 24 x 1.75 (300P11PRO)	1
22	12715A	SS Bracket Screws	4
23	15751	Rear Bracket Shim	1
24	12716	Poly Pump Slinger	1
25	12775A	Impeller Hex Nut	1
N/S	12882A	Bearing Pedestal	1
N/S	12099	7/16"-14 x 1.25" HHCS	1
N/S	13000	4 Vane Impeller Repair Kit (Items 1, 3, 6-8, 11, 12, 18, 20, 24 & 12099)	1
N/S	13000V	4 Vane Impeller FKM (viton type) Repair Kit (Items 1, 3, 6-8, 11, 12, 18, 20, 24 & 12099)	1
N/S	13999	Pump Seal/O-Ring Kit (Items 1, 3, 8, 11, 12, 18, 20, 24 & 12099)	1
N/S	13999V	FKM (viton type) Pump Seal/O-Ring Kit (Items 1, 3, 8, 11, 12, 18, 20, 24 & 12099)	1