



Shut-Off 0 GPM	40 GPM	60 GPM	80 GPM	100 GPM	120 GPM
120 PSI	116 PSI	112 PSI	110 PSI	88 PSI	53 PSI
100 PSI	97 PSI	92 PSI	84 PSI	74 PSI	46 PSI
80 PSI	75 PSI	70 PSI	61 PSI	52 PSI	20 PSI
60 PSI	57 PSI	52 PSI	43 PSI	29 PSI	-

150 SERIES HIGH PERFORMANCE HYDRAULIC PUMP

- 1 1/2" Suction / 1 1/4" Discharge.
- The high performance pump: 100 PSI at 88 GPM.
- Provides higher pressure and greater volume for applications with large tanks and longer spray booms.
- The 206 motor requires 7 GPM maximum hydraulic fluid input and fits virtually all tractor hydraulic systems.

Recommended for:

- Pressure compensating closed center systems
- Load sensing closed center systems
- Open center systems up to 16 GPM using internal needle valve bypass

Maximum Pressure: 120 PSI
Maximum Flow: 120 GPM

Note: To determine the correct Performance Data for your application, first shut off all flow on discharge side of pump and determine the shut-off pressure at the pump. Use this shut-off pressure to determine which line of data applies.

PART	DESCRIPTION
FMC-150-HYD-206	Hyd. Pump 1 1/2" x 1 1/4"



- Same specs as above, except flanged ports.
- Special order item.

PART	DESCRIPTION
FMC-150F-HYD-206	Hyd. Pump 1 1/2" x 1 1/4"

Shut-Off 0 GPM	40 GPM	80 GPM	120 GPM	160 GPM	200 GPM
120 PSI	114 PSI	100 PSI	85 PSI	65 PSI	36 PSI
100 PSI	92 PSI	83 PSI	68 PSI	52 PSI	-
80 PSI	76 PSI	68 PSI	57 PSI	43 PSI	-
60 PSI	57 PSI	50 PSI	40 PSI	-	-

200 SERIES HIGH PERFORMANCE HYDRAULIC PUMP

- 2" Suction / 1 1/2" Discharge.
- For high volume applications, Capacity to 200 GPM.
- Ideal for spraying, large tank agitation, liquid transfer and spray – transfer combinations.
- The 210 motor requires 10 GPM maximum hydraulic fluid input.

Recommended for:

- Pressure compensating closed center systems
- Load sensing closed center systems
- Open center systems up to 17 GPM using internal needle valve bypass
- The 304 motor requires 11 GPM maximum hydraulic fluid input.

Recommended for:

- Pressure compensating closed center systems
- Load sensing closed center systems
- Open center systems up to 20 GPM using internal needle valve bypass
- The 310 motor requires 16 GPM maximum hydraulic fluid input.

Recommended for:

- Large open center systems up to 24 GPM using internal needle valve bypass

Maximum Pressure: 120 PSI for 304 / 80 PSI for 210 / 60 PSI for 310
Maximum Flow: 200 GPM

Note: To determine the correct Performance Data for your application, first shut off all flow on discharge side of pump and determine the shut-off pressure at the pump. Use this shut-off pressure to determine which line of data applies.

PART	DESCRIPTION
FMC-200-HYD-210	Hydr. Pump 2" x 1 1/2"
FMC-200-HYD-304	Hydr. Pump 2" x 1 1/2"
FMC-200-HYD-310	Hydr. Pump 2" x 1 1/2"

Pump Feature	Ace Replacement	Original Equipment
Pump Bearings	203 Heavy Duty	202
Pump Shaft	3/4" Diameter	5/8" Diameter
Clutch Rating	58 ft. lbs.	30 ft. lbs.
Clutch Bearings	Two	One
Clutch Pulley	Machined Steel	Stamped Steel

HEAVY DUTY SPRACOUPE CENTRIFUGAL PUMP

Maximize the reliability and durability of your Spracoupe with an Ace Heavy-Duty Centrifugal Pump. This powerful design delivers superior performance with minimal maintenance, when compared to its closest industry competitors. Ace Pumps' precision craftsmanship ensures the pump's dependability and longevity.

- Fits Spracoupe models 3430, 3440, 3630, 3640, 4440, 4640.
- Heavy duty 204 bearings – 66% more dynamic load capacity than original equipment.
- Ultra-durable double bearing clutch – 93% higher torque rating than original equipment.
- Optional severe duty controlled porosity silicon carbide seal.
- 3/4" pump shaft.

PART
FMC-CW-150-MAG-DX3



316 Stainless steel straight centrifugal pump with flanged ports driven by a 7 GPM new generation hydraulic motor with integral needle valve. Supplied with restrictor orifice.

- Max. pressure: 120 PSI Max. flow: 135 GPM
- Inlet port 1-1/2" NPT and 220 full port flange
- Outlet port 1-1/4" NPT and 200 standard port flange

PART	DESCRIPTION
FMC150FSHYD206	Stainless HYD. Pump



SPEED RPM	5 PSI GPM	10 PSI GPM	15 PSI GPM	20 PSI GPM	30 PSI GPM	40 PSI GPM	50 PSI GPM	60 PSI GPM	70 PSI GPM
2400	74	73	64	54	-	-	-	-	-
3600	108	107	106	105	102	90	69	34	-
4200	-	124	122	122	118	115	107	93	70

9203C SERIES PUMP

Hypro pedestal mounted cast iron centrifugal pumps c/w non-corrosive plastic impeller, Viton seal, and 5/8" solid shaft with 3/16" keyway.

PART	DESCRIPTION
9203C	1 1/2" x 1 1/4"
9203C-R	1 1/2" x 1 1/4", Reverse rotation



9203C PUMP WITH 12V MAGNI-CLUTCH

Will transmit up to 10 HP at 4000 RPM. Energized by using on-off toggle switch at driver's seat. Draws only 2 amps from 12 V battery during operation. Eliminates necessity of using PTO or hydraulic systems. Simple installation.

PART	DESCRIPTION
9263C-C	Pump with Clutch
3430-0592	12V Clutch Only



9303 POLY PUMP

PART	DESCRIPTION
9303P-HM4C	1 1/2" Inlet, 1 1/4" Outlet



9203P POLYPROPYLENE PUMP

5/8" shaft, 3/16" keyway, 1 1/2" inlet, 1 1/4" outlet.

PART
9203P-S



9303 Series

9300 SERIES HYDRAULIC

PART	DESCRIPTION
9302C-HM1C	1 1/4" x 1" Open
9302C-HM2C	1 1/4" x 1" Closed
9302C-HM4C	1 1/4" x 1" Closed
9303C-HM1C	1 1/2" x 1 1/4" Open/Closed
9303C-HM2C	1 1/2" x 1 1/4" Closed
9303C-HM3C	1 1/2" x 1 1/4" Open
9303C-HM4C	1 1/2" x 1 1/4" Open/Closed



9000 SERIES CAST IRON GEAR DRIVE PUMPS

PART	DESCRIPTION
9006C-0	1 3/8" - 540 PTO
9008C-0	1 3/8" - 1000 PTO
9016C-0	1" - 540 PTO
9018C-0	1" - 1000 PTO



9306 SERIES

PART	DESCRIPTION
9306C-HM1C	2 x 1 1/2" Open/Closed*
9306C-HM5C	2 x 1 1/2" Open*



9300 SERIES STAINLESS STEEL

PART	DESCRIPTION
9303S-HM1C	1 1/2" Inlet, 1 1/4" Outlet
9303S-HM2C	1 1/2" Inlet, 1 1/4" Outlet
9303S-HM3C	1 1/2" Inlet, 1 1/4" Outlet
9303S-HM4C	1 1/2" Inlet, 1 1/4" Outlet
9303S-HM5C	1 1/2" Inlet, 1 1/4" Outlet
9306S-HM1C	2" Inlet, 1 1/2" Outlet
9306S-HM3C	2" Inlet, 1 1/2" Outlet
9306S-HM5C	2" Inlet, 1 1/2" Outlet



9000 SERIES POLY GEAR DRIVE PUMPS

PART	DESCRIPTION
9006P-0	1 3/8" - 540 PTO
9008P-0	1 3/8" - 1000 PTO
9016P-0	1 3/8" - 540 PTO POLY
9018P-0	1 3/8" - 1000 PTO POLY

Gas Engine Powered Pumps



WP-2065HL GENERAL PURPOSE 2" WATER PUMP

- 2" NPT inlet and outlet Aluminum Pump.
- Honda GX200 6.5HP engine with Oil Alert.
- 158 gallons per minute Maximum Flow.
- 82' Total Lift.
- Solids through pump not recommended.

PART	DESCRIPTION
WP-2065HL	2" Water Pump w/ Honda



WP-3065HL GENERAL PURPOSE 3" WATER PUMP

- 3" NPT inlet and outlet Aluminum Pump.
- Honda GX200 6.5HP engine with Oil Alert.
- 264 gallons per minute Maximum Flow.
- 85' Total Lift.
- Solids through pump not recommended.

PART	DESCRIPTION
WP-3065HL	3" Water Pump w/ Honda



4" WATER TRANSFER PUMP W/ HONDA GX390 ENGINE

- 4" male NPT inlet and outlet ports.
- Aluminum casing and H.D. Cast Iron impeller.
- 422 GPM maximum flow.
- 26' suction lift, 98' total lift.
- Honda 389cc engine features 6.8 litre fuel tank, recoil start, and low oil alert.

PART	DESCRIPTION
WP-4013HR	4" Water Pump w/ Honda



1" WATER TRANSFER PUMP W/ POWEREASE 79CC ENGINE

- 1" male NPT inlet and outlet ports.
- Aluminum impeller and casing.
- 42 GPM maximum flow.
- 20' suction lift, 85' total lift.
- Powerease engine features 2 litre fuel tank, recoil start, and low oil shutdown protection.

PART	DESCRIPTION
WP-1020R	1" Water Pump w/ Powerease



WP-2070S 2" WATER PUMP

- 2" NPT inlet and outlet Aluminum Pump.
- Powerease 210CC engine with Oil Alert.
- 158 gallons per minute Total Flow.
- 82' Total Lift.
- Solids through pump not recommended.

PART	DESCRIPTION
WP-2070S	2" Pump w/ 210 CC engine



WP-3070S 3" WATER PUMP

- 3" NPT inlet and outlet Aluminum Pump.
- Powerease 7HP engine with Oil Alert.
- 264 gallons per minute Total Flow.
- 85' Total Lift.
- Solids through pump not recommended.

PART	DESCRIPTION
WP-3070S	3" Pump w/ 7 HP engine



HP-2065HR HIGH PRESSURE 2" TRANSFER PUMP

High pressure system operates at 65 PSI; ideal for lawn sprinkling and fire fighting.

- 2" NPT inlet and outlet Aluminum Pump.
- Honda GX200 6.5HP engine with Oil Alert.
- 126 gallons per minute Maximum Flow.
- 197' Total Lift (@ 85 PSI).
- Solids through pump not recommended.

PART	DESCRIPTION
HP-2065HR	2" High Pressure Pump



TP-3013HM 3" TRASH PUMP

- 3" NPT inlet and outlet Aluminum Pump.
- Honda GX390 13HP engine with Oil Alert.
- 286 gallons per minute Maximum Flow.
- 98' Total Lift.
- Handles solids up to 1" diameter through pump.

PART	DESCRIPTION
TP-3013HM	3" Trash Pump w/ Honda



TP-4013HM 4" TRASH PUMP

- 4" NPT inlet and outlet Aluminum Pump.
- Honda GX390 13HP engine with Oil Alert.
- 506 gallons per minute Maximum Flow.
- 95' Total Lift.
- Handles solids up to 1" diameter through pump.

PART	DESCRIPTION
TP-4013HM	4" Trash Pump w/ Honda

Gas Engine Powered Pumps



2" HIGH PRESSURE/FIREFIGHTING PUMP W/ POWEREASE 210CC ENGINE

- 2" male NPT inlet and outlet ports.
- Aluminum impeller and casing.
- 126 GPM maximum flow, 85 PSI Outlet Pressure.
- 26' suction lift, 197' total lift.
- Powerease engine features 3.6 litre fuel tank, recoil start, and low oil shutdown protection.

PART	DESCRIPTION
HP-2070R	2" HP Pump w/ Powerease



2" HIGH PRESSURE PUMP W/ HONDA GX390 ENGINE

- 2" male NPT inlet and outlet ports.
- Heavy Duty Aluminum impeller & Aluminum casing.
- 140 GPM maximum flow; 145 PSI Outlet Pressure.
- 26' Suction lift, 330' total lift.
- Honda GX390 (389cc) engine features recoil start, low oil alert, and 6.8L (1.8 USG) fuel tank capacity.

PART	DESCRIPTION
HP-2013HR	2" HP Pump w/ Honda



2" SEMI-TRASH PUMP W/ HONDA GX200 ENGINE

- 2" male NPT inlet and outlet ports.
- 125 GPM maximum flow.
- 26' suction lift, 82' total lift.
- Handles up to 5/8" solids.
- Honda 196cc engine features 3.1 litre fuel tank, recoil start, and low oil alert.

PART	DESCRIPTION
TP-2065HT	2" Semi-Trash Pump w/ Honda



SUCTION HOSE ASSEMBLY – "C" CAMLOCK X MNPT

Our standard, general-purpose PVC suction hose. It is flexible, lightweight, non-marking, and resistant to mild chemical solutions. Assemblies come with a "C" Female Cam-lock and galvanized MNPT nipple.

- 20-foot hose length.
- Fittings secured with double band clamps.

PART	DESCRIPTION
PVCS112CM20	1½" Suction Hose Assembly
PVCS2CM20	2" Suction Hose Assembly
PVCS3CM20	3" Suction Hose Assembly
PVCS4CM20	4" Suction Hose Assembly
PVCS6CM20	6" Suction Hose Assembly



HEAVY DUTY BRONZE FOOT VALVE

- Includes perforated stainless-steel strainer.

PART	DESCRIPTION
FV100	Bronze Foot Valve 1" FNPT
FV112	Bronze Foot Valve 1½" FNPT
FV200	Bronze Foot Valve 2" FNPT
FV300	Bronze Foot Valve 3" FNPT
FV400	Bronze Foot Valve 4" FNPT

Other sizes available; please inquire.



3" SEMI-TRASH PUMP W/ HONDA GX200 ENGINE

- 3" male NPT inlet and outlet ports.
- 264 GPM maximum flow.
- 26' suction lift, 85' total lift.
- Handles up to 1" solids.
- Honda 196cc engine features 3.1 litre fuel tank, recoil start, and low oil alert.

PART	DESCRIPTION
TP-3065HR	3" Semi-Trash Pump w/ Honda



LAY-FLAT HOSE ASSEMBLY – "C" & "E" CAMLOCKS

Assemblies are lightweight, economical PVC hoses that flatten and roll up tightly when not in use. designed for applications where external abuse is limited. Used widely for irrigation, construction, flood protection, and municipal applications.

- Assemblies are supplied with female "C" and male "E" aluminum cam-locks.
- Fittings secured with double band clamps.
- Available in 50-foot and 100-foot lengths.

PART	DESCRIPTION
PVCL112CE50	1½" x 50' Lay-flat Assembly
PVCL2CE50	2" x 50' Lay-flat Assembly
PVCL3CE50	3" x 50' Lay-flat Assembly
PVCL4CE50	4" x 50' Lay-flat Assembly
PVCL6CE50	6" x 50' Lay-flat Assembly
PVCL112CE100	1½" x 100' Lay-flat Assembly
PVCL2CE100	2" x 100' Lay-flat Assembly
PVCL3CE100	3" x 100' Lay-flat Assembly
PVCL4CE100	4" x 100' Lay-flat Assembly
PVCL6CE100	6" x 100' Lay-flat Assembly



PVC FOOT VALVES

PART	DESCRIPTION
FVPVC1000	PVC Foot Valve 1" FNPT
FVPVC1500	PVC Foot Valve 1½" FNPT
FVPVC2000	PVC Foot Valve 2" FNPT
FVPVC3000	PVC Foot Valve 3" FNPT

Other sizes available; please inquire.



4" TRASH PUMP W/ POWEREASE 420CC ENGINE

- 4" male NPT inlet and outlet ports.
- Cast Iron impeller and aluminum casing.
- 580 GPM max. flow; 26' suction lift, 95' total lift.
- Handles up to 1" solids.
- Powerease engine features 3.6 litre fuel tank, recoil start, and low oil shutdown protection.

PART	DESCRIPTION
TP-4015RM	4" Trash Pump w/ Powerease

Poly Pumps **HYPRO**



1542P-5SP 2" POLY PUMP

- Features 5-Vane impeller and 6.5 HP PowerPro engine.
- EPDM mechanical seal and inlet valve.
- Low oil sensor on engine.
- Maximum suction lift of 25 feet.
- 2" Female NPT inlet and outlet ports.

PART	DESCRIPTION
1542P-5SP	2" Poly Pump (5-vane) w/ 6.5 HP PowerPro engine
3430-0690	Pump head kit for 1542P-3SP
3430-0691	Pump head kit for 1542P-5SP (unassembled)
3430-0635	Seal kit for 1542P-3SP / 1542P-5SP pumps



3" FNPT Inlet/Outlet



3" Manifold Inlet/Outlet

1543P SERIES 3" POLY PUMPS

- Three models powered by EPA 13.0 HP PowerPro engines – pull or electric start.
- 1543P-130ESP-01 model features 3" Manifold Inlet and Outlet ports.
- Self-priming pumps with a maximum lift of 25 feet.
- EPDM mechanical seal and inlet valve.

PART	DESCRIPTION
1543P-130ESP	3" Poly Pump w/ 13.0 HP PowerPro engine – Electric
1543P-130ESP-01	3" Poly Pump w/Manifold Inlet/Outlet and 13.0 HP PowerPro engine – Electric start
3430-0692	Pump head kit for 1543P pumps (unassembled)
3430-0757	Seal kit for 1543P series pumps
3430-0758	SHIM kit for 1543P pump and 3430-0693 KIT

1542P / 1543P SERIES PUMPS – PERFORMANCE (US GALLONS)

MODEL	GPM @ 0 PSI	GPM @ 10 PSI	GPM @ 20 PSI	GPM @ 30 PSI	GPM @ 40 PSI	GPM @ 50 PSI	GPM @ 58 PSI
1542P-5SP	200	182	162	136	106	65	0
1543P-90ESP	373	343	291	231	156	53	0
1543P-130ESP	440	400	338	269	184	68	0



9342P & 9343P SERIES HYDRAULICALLY-DRIVEN POLY PUMPS

- Polypropylene Housing with either 2" Female NPT or 3" Female NPT ports.
- 2" models – Up to a Maximum 206 GPM / 60 PSI. See performance chart below.
- 2" models – Up to a Maximum 484 GPM / 58 PSI. See performance chart below.
- Pump Seals – EPDM Mechanical.
- Suction Lift – Maximum 25 feet.
- Poly impeller with Stainless Steel insert.

PART	DESCRIPTION
9342P-HM1C-5SP	2" Hydraulic Poly Pump – 10 GPM motor capacity
9342P-HM5C-5SP	2" Hydraulic Poly Pump – 13 GPM motor capacity
9343P-GM6-SP	3" Hydraulic Poly Pump – 8 to 11 GPM motor capacity
9343P-GM10-SP	3" Hydraulic Poly Pump – 12 to 16 GPM motor capacity

9342 SERIES 2" PUMP PERFORMANCE

9342P-HM1C-5SP							
Hyd. Flow GPM	GPM @ 0 PSI	GPM @ 10 PSI	GPM @ 20 PSI	GPM @ 30 PSI	GPM @ 40 PSI	GPM @ 50 PSI	GPM @ 58 PSI
8	165	145	122	95	57	-	-
9	185	166	144	119	86	0	-
10	200	184	164	141	114	80	0

9342P-HM5C-5SP							
Hyd. Flow GPM	GPM @ 0 PSI	GPM @ 10 PSI	GPM @ 20 PSI	GPM @ 30 PSI	GPM @ 40 PSI	GPM @ 50 PSI	GPM @ 60 PSI
9	175	154	123	84	0	-	-
10	192	174	149	118	76	0	-
11	206	189	169	145	117	79	0

9343 SERIES 3" PUMP PERFORMANCE

9343P-GM6-SP													
Performance	Feet	0	12	23	35	46	58	69	81	92	104	116	127
	PSI	0	5	10	15	20	25	30	35	40	45	50	55
8 Gal/Min	GPM	342	316	284	240	176	67	-	-	-	-	-	-
9 Gal/Min	GPM	378	355	327	294	252	194	103	-	-	-	-	-
10 Gal/Min	GPM	414	394	371	345	314	276	227	155	52	-	-	-
11 Gal/Min	GPM	450	433	414	392	368	340	307	265	210	128	28	-

9343P-GM10-SP													
Performance	Feet	0	12	23	35	46	58	69	81	92	104	116	127
	PSI	0	5	10	15	20	25	30	35	40	45	50	55
12 Gal/Min	GPM	364	340	310	274	227	157	46	-	-	-	-	-
13 Gal/Min	GPM	391	368	342	312	275	227	158	55	-	-	-	-
14 Gal/Min	GPM	415	395	373	348	318	282	236	170	74	-	-	-
15 Gal/Min	GPM	445	426	406	383	357	327	292	247	187	102	7	-
16 Gal/Min	GPM	484	466	446	425	401	374	344	309	266	211	139	47

9243P-SP 3" POLY PEDESTAL PUMP

- 3" Female NPT inlet and outlet ports.
- 1" keyed shaft; requires 12 HP motor to achieve maximum performance.
- 460 GPM maximum volume; 54 PSI maximum pressure.
- Maximum suction lift of 25 feet; maximum total head of 125 feet.
- Pump Seals – EPDM Mechanical.
- Poly impeller with Stainless Steel insert.



PART	DESCRIPTION
9243P-SP	3" Poly Pedestal Pump w/ 1" keyed shaft

9243P-SP PERFORMANCE CHART

PSI	Feet*	2900 RPM		3200 RPM		3500 RPM	
		GPM	HP	GPM	HP	GPM	HP
0	0	380	7.1	424	9.1	460	12.2
5	12	358	6.8	405	8.9	445	11.8
10	23	342	6.5	384	8.7	425	11.4
15	35	312	6.3	359	8.5	404	11.1
20	46	275	6.0	331	8.3	379	10.9
25	58	224	5.6	297	8.0	353	10.6
30	69	160	5.0	251	7.5	321	10.2
35	81	50	4.2	193	7.0	280	9.8
40	92	-	-	103	6.2	227	9.2
45	104	-	-	0	5.3	159	8.5
50	116	-	-	-	-	70	7.5



3" Model Shown

BANJO 2" AND 3" POLY PUMPS W/ HONDA ENGINES

- EPDM seals and gaskets.
- Female NPT inlet and outlet ports.
- Poly 5-Vane impeller on 2" model and poly 4-Vane impeller on 3" model; poly casing on both models.
- 2" Model features Honda GX 5.5 HP engine and 3" model features Honda GX 6.5 HP engine.
- Both engines include low oil sensor.

PART	DESCRIPTION
200PH5	2" Banjo Poly Pump w/ 5.5 HP
300PH6	3" Banjo Poly Pump w/ 6.5 HP



BANJO 2" AND 3" POLY PUMPS W/ 6.5 HP BRIGGS & STRATTON ENGINES

- EPDM seals and gaskets
- Available in either 2" or 3" Female NPT Inlet and outlet ports.
- Powered by a 6.5 HP Briggs & Stratton engine with pull start and oil alert.
- 216 US gallons per minute maximum.

PART	DESCRIPTION
200P6PRO	2" Banjo Poly Pump w/ 6.5 HP Briggs & Stratton Engine
300P6PRO	3" Banjo Poly Pump w/ 6.5 HP Briggs & Stratton Engine



1537 PUMP

- Unit includes pump, engine and base.
- Honda 5.5 HP oil alert engine and Hypro 1538 pump.
- 1 1/2" inlet, 1 1/4" outlet.
- Nylon impeller.
- 82 GPM @ 40 PSI, 70 GPM @ 50 PSI, 50 GPM @ 60 PSI.

PART	DESCRIPTION
1537	Pump/Engine – Honda 5.5HP
1537-U	Pump, Honda - Unassembled



NEW!

BANJO 3" M350 SELF-PRIMING CENTRIFUGAL POLY PUMP

- New **FastFlow™** technology diffuser design increases flow rate of pump.
- Capable of flow rates over 500 GPM.
- Tandem wet seal design; run-dry capable in excess of one hour. Handles up to 1/2" suspended solids.
- Poly pump w/ EPDM seals & S.S. hardware.
- Mates with a 1" keyed shaft engine (min. 13HP).
- Can be plumbed to 4" hose for maximum GPM performance.

PART	DESCRIPTION
M350POW	3" Banjo Self-Priming Centrifugal Pump



2" Model Shown

BANJO 2" AND 3" FULL PORT MANIFOLD POLY PUMPS W/ HONDA GX SERIES ENGINES

- EPDM seals and gaskets.
- Full Port Manifold inlet and outlet ports.
- Precision molded construction
- 2" Model features Honda GX 5.5 HP engine and 3" model features Honda GX 6.5 HP engine.
- Both engines include low oil sensor.

PART	DESCRIPTION
M220PH5	2" Banjo Poly Pump w/ 5.5 HP
M300PH6	3" Banjo Poly Pump w/ 6.5 HP



ACE GE660 PUMP

- Ace 5 1/2 HP Honda
- 1 1/2" inlet
- 1 1/4" outlet
- 6" impeller mounts to 3/4" shaft
- 110 GPM @ 20 PSI @ 3400 RPM
- 49 GPM @ 60 PSI @ 3400 RPM

PART	DESCRIPTION
GE660	Pump/Engine – Honda 5.5HP
GE660-U	Pump, Honda - Unassembled



POLY CHECK VALVE

- 2" or 1 1/2".
- Available with or without check valve.

PART	DESCRIPTION
FVPP2	2" Strainer C/W Check
FVPP2LC	2" Strainer Less Check
100750	2" NPT Female x Hose Insert
504019	2" Check Valve
2452067	2" NPT Female x 1 1/2" NPT Male Adapter
100640	1 1/2" NPT Female x 1 1/2" Hose Insert



METAL STRAINER

- NPT female threads.

PART	DESCRIPTION
SUCTION2	2" FPT Steel Strainer
SUCTION3	3" FPT Steel Strainer
SUCTION4	4" FPT Steel Strainer



FLOATING FILTER

- 2" hose connection.
- Floats just below water level.
- Keeps suction hose off bottom.

PART	DESCRIPTION
FLOAT	2" Floating Pond Filter

TrunkPump™

TrunkPump turns pumping into an easy one-person job and saves time, money and labor because your tractor does all the hard work.

TrunkPump Dewatering, Trash & Pressure Pumps handle a wide variety of applications, and our full line of Accessories help get the job done.

All 3-Point (Category 1) Models include Tractor Mounting Hardware and PTO shaft.



PTO- DRIVEN MODEL
(shown with optional hose kit)



HYDRAULIC-DRIVEN MODEL



CYLINDER-STYLE STRAINER



TAPER-STYLE STRAINER

PTO-DRIVEN PUMPS – Category 1, 540 rpm; require 8HP motor

PART	DESCRIPTION
TP-3PTV	3" De-Watering Self-Priming Poly Pump (Hypro 1543P) • 400+ GPM; 90' total head, up to 40 PSI. • Useful for a wide range of water / liquid transfer / evacuation applications where volume is important. Easy to maintain.
TP-2PTP	2" High Pressure Self-Priming Die Cast Aluminum Pump • 120+ GPM; 18 feet suction head, up to 88 PSI (75 PSI @ 30 GPM) • Useful for irrigation and high head / pressure applications where moderate volume is required. Silicone Carbide seal.
TP-2PTR	2" Trash Self-Priming Die Cast Aluminum Pump • 200+ GPM; 25 feet suction head, up to 45 PSI • Useful for water transfer / evacuation – handles solids up to 1"
TP-3PTR	3" Trash Self-Priming Die Cast Aluminum Pump • 300+ GPM; 25 feet suction head, up to 40 PSI • Useful for water transfer / evacuation – handles solids up to 1.25" • Heavy duty; Ductile Iron Impeller, Cast Iron volute.
TP-4PTR	4" Trash Self-Priming Die Cast Iron Pump • 500+ GPM; REQUIRES 16 HP motor • Useful for high water transfer / evacuation – handles solids up to 2"

HYDRAULIC DRIVEN DE-WATERING PUMPS

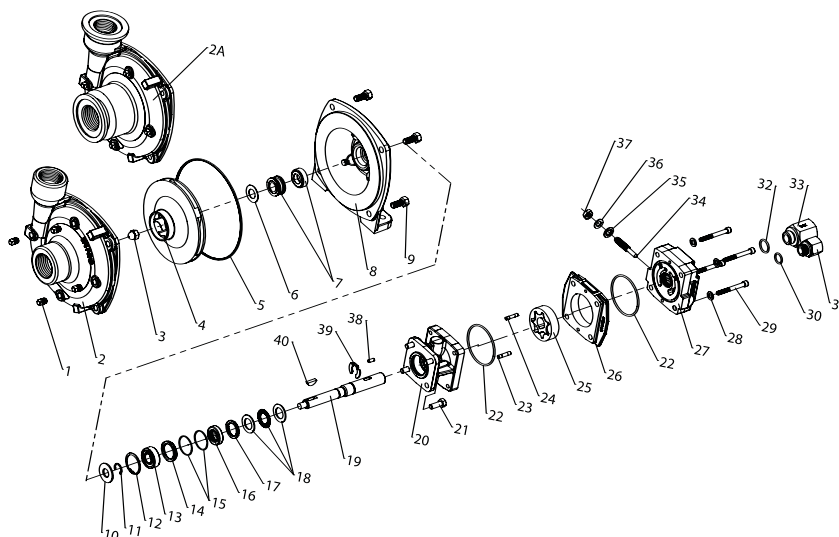
Pumps come in compact roll cage configuration with cam-lock pump fittings, hydraulic flow regulating manifold, 8 ft hydraulic hoses w/ male and female Flush-Face Quick Disconnect Couplings (ISO-16028 interface for universal interchangeability). 1-year Manufacturer's Warranty.

Requirements: Remote hydraulics with 9 – 30 GPM and 1200 PSI minimum

PART	DESCRIPTION
TP-2HYD	2" De-Watering Self-Priming Reinforced Poly Pump • 190+ GPM; Total Dynamic Head: 70+ feet, self-priming to 25 feet • Built-in check valve; 75 lbs., 25" x 19" x 19"
TP-3HYD	3" De-Watering Self-Priming Reinforced Poly Pump • 280+ GPM; Total Dynamic Head: 70+ feet, self-priming to 25 feet • Built-in check valve; 75 lbs., 25" x 19" x 19"

SPECIALTY SHALLOW STRAINERS – Includes elbow fitting

PART	DESCRIPTION
SHALLOWSTRAIN2	2" Cylinder-Style Strainer – draws to ½" depth
SHALLOWSTRAIN3	3" Cylinder-Style Strainer – draws to ½" depth
SHALLOWSTRAIN	2" Taper-Style Strainer – draws to ¼" depth
SHALLOWSTRAIN3A	3" Taper-Style Strainer – draws to ¼" depth



HYPRO 9303C AND 9303S SERIES CENTRIFUGAL PUMP PARTS – Please Use Part Number When Ordering and Note Quantity Required.

REF #	QTY. REQ'D	PART	DESCRIPTION
1	4	2406-0007	Drain/Vent Plug (9303C) – ORDER # 2406-0016
1	4	2406-0016	Drain/Vent Plug (9303S)
2	1	0150-9000C	Pump Casing (model 9303C)
2	1	0150-9000S	Pump Casing (model 9303S)
2A	1	0153-9000C	Pump Casing (Universal Flange Model C-U)
3	1	2253-0002	Impeller Nut (9303C)
4	1	0401-9100P	Impeller (Nylon standard 9303C)
4	1	0402-9100P	Impeller (Polypropylene Optional (Std 9303S))
5	1	1720-0083	O-ring
6	1	1700-0100	Gasket
7	1	2120-0009	Mechanical Seal (Viton/Ceramic)(Std. 9303C) - N/A
7	1	3430-0589	Mechanical Seal (Silicon Carbide)(Std. 9303S)
8	1	0750-9300C	Mounting Flange (9303C)
8	1	0756-9300S	Mounting Flange (9303S)
9	4	2210-0020	Hex Head Cap Screw (9303C)
9	4	2210-0125	Hex Head Cap Screw (9303S)
10	1	1410-0056	Slinger Ring
11	1	1810-0014	Snap Ring
12	1	1820-0013	Retaining Ring
13	1	2000-0010	Ball Bearing
14	1	1410-0131	Cartridge, Front
15	2	1720-0268	O-ring
16	1	2104-0010	Lip Seal (only sold in Parts Kit 3430-0748) - N/A
17	1	1410-0130	Seal Spacer
18	1	2029-0014	Thrust Bearing Assembly
19	1	0531-2500	Shaft (HM2C/HM4C) – ORDER # 3430-0850
19	1	0533-2500	Shaft (HM1C/HM5C) – ORDER # 3430-0852
19	1	3430-0855	Shaft Kit
20	1	0150-2500C	Motor Body (includes needle bearing)
21	4	2210-0005	Hex Head Cap Screw
22	2	1720-0110	O-ring
23	1	1600-0045	Dowel Pin (HM2C/HM4C)
23	1	1600-0044	Dowel Pin (HM1C/HM5C)
23	1	1600-0052	Dowel Pin (HM3C)

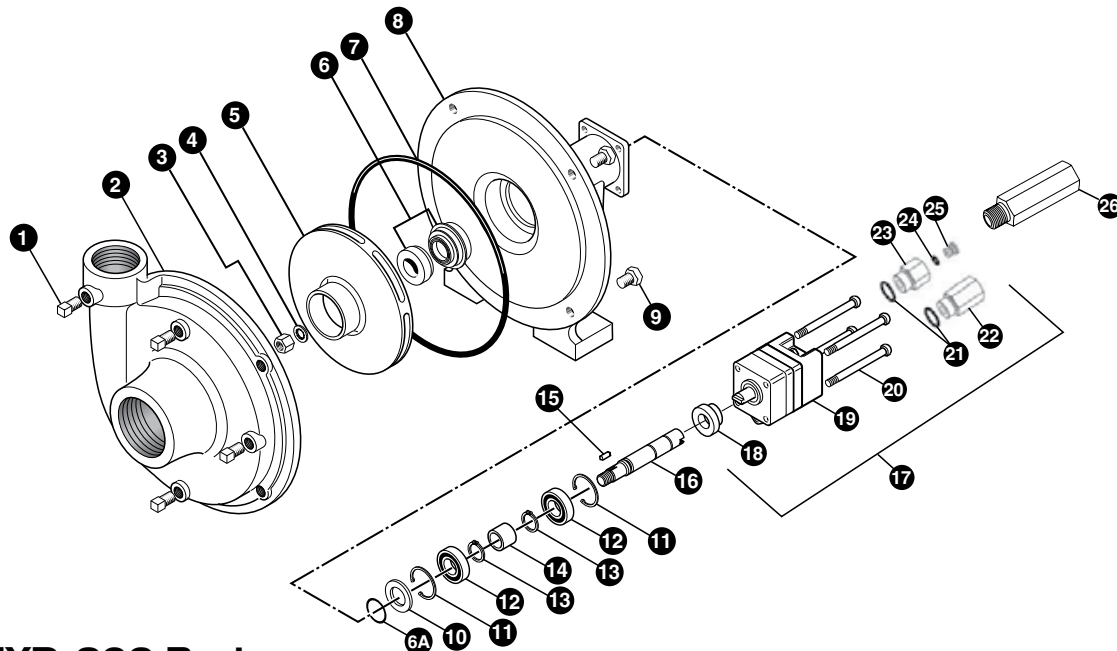
REF #	QTY. REQ'D	PART	DESCRIPTION
24	1	1600-0042	Dowel Pin (HM2C/HM4C)
24	1	1600-0037	Dowel Pin (HM1C/HM5C)
24	1	1600-0068	Dowel Pin (HM3C)
25	1	3900-0022	Gerotor (HM1C)
25	1	3900-0023	Gerotor (HM2C)
25	1	3900-0024	Gerotor (HM3C)
25	1	3900-0025	Gerotor (HM4C)
25	1	3900-0048	Gerotor (HM5C)
26	1	0701-2500C1	Gerotor Housing (HM2C models) ¼" wide
26	1	0700-2500C1	Gerotor Housing (HM1C models) ½" wide
26	1	0703-2500C1	Gerotor Housing (HM4C models) 5/16" wide
26	1	0702-2500C1	Gerotor Housing (HM3C models) 1" wide
26	1	0704-2500C1	Gerotor Housing (HM5C models) 5/8" wide
27	1	0254-2500C2	Motor End Plate (includes needle bearing) - N/A
28	4	2270-0039	Washer
29	4	2220-0045	Cap Screw (HM2C/HM4C models)
29	4	2220-0021	Cap Screw (HM1C models)
29	4	2220-0044	Cap Screw (HM3C models)
29	4	2220-0032	Cap Screw (HM5C models)
30	1	1720-0108	O-ring
31	1	3360-0021A	Pressure Port Adapter (includes o-ring)
32	1	1720-0262	O-ring (included with 3320-0051A) - N/A
33	1	3320-0051A	Tank Port Adapter (includes o-ring)
34	1	3220-0029	Bypass Adjusting Screw
35	1	1700-0047	Gasket
36	1	2270-0027	Washer
37	1	2250-0038	Lock Nut
38	1	1610-0032	Roll Pin (HM2C/HM4C)
38	1	1610-0031	Roll Pin (HM1C/HM5C)
38	1	1610-0055	Roll Pin (HM3C)
39	1	1810-0026	Snap Pin
40	1	1610-0012	Woodruff Key (9303C)

HYPRO 9303C AND 9303S SERIES KITS AND HYDRAULIC MOTORS

PART	DESCRIPTION
3430-0332	Repair Kit – contains: One o-ring (ref 5), one rubber gasket (ref 6), one mechanical seal (ref 7).
3430-0589	Silicon Seal Kit – contains pump casing O-ring and mechanical seal.
3430-0187	Adapter Kit (HM2 and HM4 Models Only) – contains: 3360-0021 Pressure Port Adapter, 3373-0020 (size #1), 3373-0021 (size #2) 3373-0022 (size #3), 1720-0108 Adapter O-ring, and 1720-0105 Orifice O-ring (Qty 3).
3430-0748	Parts Kit – contains one each of ball bearing (ref 13), motor shaft seal (ref 16), thread seal gasket (ref 35), two cartridge o-rings (ref 15), and washer (ref 36); and two each of motor housing o-rings (ref 22), and port adapter o-rings (ref 30 and 32).

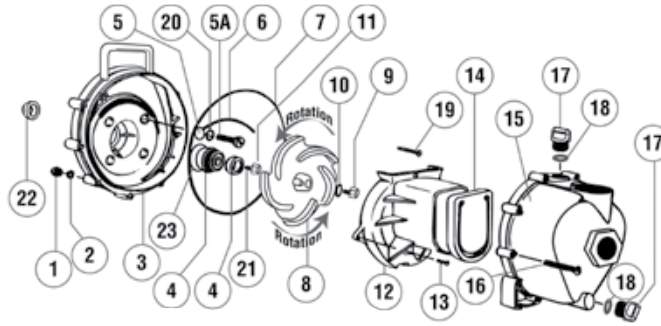
PART	DESCRIPTION
2500-0081C	Hydraulic Motor (HM1C)
2500-0082C	Hydraulic Motor (HM2C)
2500-0083C	Hydraulic Motor (HM3C)
2500-0084C	Hydraulic Motor (HM4C)
2500-0085C	Hydraulic Motor (HM5C)

FMC-150-HYD-206



FMC-150-HYD-206 Parts

REF	PART	EDP #	DESCRIPTION	REQ'D
1	BAC53	41110	Pipe Plug	4
1	BAC53SS	41120	Pipe Plug, Stainless Steel (optional)	4
2	BAC12150	40255	Volute - 1½" x 1¼"	1
3	BAC23A	40391	Nut - ⅜" NF, cad plated	1
3	BAC23BSS	40393	Nut - ⅜" NF, Stainless Steel (standard on -SS models)	1
4♦	BAC24HYDSS	40400	Washer, ⅜" Star, Stainless Steel	1
4	BAC24BSS	42702	Washer, ⅜", Stainless Steel, vibration proof (standard on -SS models)	1
5	BAC26150P	40446	Impeller, Valox, keyway	1
5	BAC26150CI	40445	Impeller, Cast Iron, keyway (optional)	1
5	BAC26150PI	40448	Impeller, Polypropylene, keyway (optional)	1
6♦	BAC7V	40151	Seal, Carbon/Ceramic/Viton (includes 40160 O-ring)	1
6◇	BAC7SC	40152	Seal, Silicon Carbide/Viton (includes 40160 O-ring) (optional)	1
6A♦	40160	40160	O-ring, Shaft Seal	1
7♦	BAC4150	40015	O-ring, Body Seal	1
8	BAC14150HYD	40305	Mounting Frame (for 200 Series hydraulic motor)	1
9	40950	40950	Cap Screw, ⅜" NC x ¾" Hex Head	4
9	40930	40930	Cap Screw, ⅜" NC x ¾" Hex Head, Stainless Steel (optional)	4
10	BAC54	41130	Slinger	1
11	BAC33	40810	Snap Ring, Internal, BAC14 Mounting Frame	2
12	BAC37	40870	Ball Bearing, Sealed, BAC6 Shaft	2
13	BAC32	40790	Snap Ring, External, BAC6 Shaft	2
14	BAC32S	40795	Spacer for BAC6 Shaft	1
15	BACH25	40420	Key, ⅛" x 1⅛" x ½"	1
16	BAC6HYDSS	40061	Shaft, ⅝" Diameter, Keyway and Tang Slot, Stainless Steel	1
17	BAC75HYD206	41372	Hydraulic Motor, 7 GPM (includes parts 18 - 25)	1
18	S200	40161	Seal Support Spacer for 200 Series HYD Motor	1
19	BAC75HYD206N	41397	Hydraulic Motor, 7 GPM (motor only - no external fittings)	1
20	41255-ACE	41255	Cap Screw, 5/16" N.C. x 3 ¾" Socket Head (for 206N motor)	4
21	41875	41875	O-ring, #8 SAE fitting	2
22	BAC788SAE	41441	Reverse Check Valve, #8 SAE male x ½" NPT female	1
23	BAC808SAE	41455	Adapter, Restrictor Body, #8 SAE male x ½" NPT male	1
24	41448	41448	O-ring, Orifice Insert	1
25	BAC797	41456	Orifice, Restrictor Insert, .109 (206N)	1
26	LS-206N	41418	Flow Limiting Valve (206N), #8 SAE male x ½" NPT male	1
♦	RKFMC150	52710	Repair Kit for FMC-150 Series Pump	-
◇	RKFMCSC150	52711	Repair Kit for FMC-150 Series with Silicon Carbide Shaft Seal	-
#	RKBAC75HYDL	41374	Repair Kit for 200-L Series Motor	-

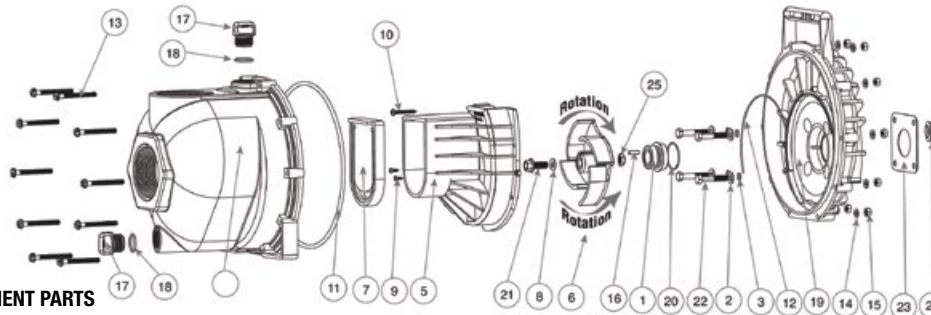


2" BANJO POLY PUMP REPLACEMENT PARTS

N/S = Not Shown

REF	PART	DESCRIPTION	REQ'D
1	V07019	SS Body Nuts	10
2	V07018	SS Lock Washers	10
3	12703A	Poly Pump Rear Bracket	1
4	12713	Seal Assembly	1
4	12713V	FKM (viton type) Seal Assembly w/316 SS Cup and Spring	1
5	12717	O-Ring for Screw Head	4
5	12717V	FKM (viton type) O-Ring for Screw Head	2
5A	12715A	SS Bracket Screws	4
6	12754	O-Ring Segment	1
6	12754V	FKM (viton type) O-Ring Segment	1
7	12719A	Body O-Ring	1
7	12719AV	FKM (viton type) Body O-Ring	8
8	12772	5 Vane Impeller	1
9	12765A	SS Impeller Bolt	1
10	12774VA	Impeller Bolt Gasket	1
11	12775A	Impeller Hex Nut	1
12	12702A	Poly Pump Volute	1
13	12725	SS Volute Screws	2
14	12705	Poly Pump Check Valve	1
14	12705V	FKM (viton type) Pump Check Valve	1

REF	PART	DESCRIPTION	REQ'D
15	12712A	Body Assembly	1
16	12720	SS Body Screws	10
17	12777	Prime/Drain Plug	2
18	UV15163	Prime/Drain Plug O-Ring	2
18	UV15163V	FKM (viton type) Prime/Drain Plug O-Ring	1
19	12900	SS Upper Volute Screw	4
20	12901	SS Rear Bracket Washer	1
21	12902A	Impeller Key	1
22	12716	Poly Pump Slinger	1
23	12710	O-Ring for Seal Assembly	1
23	12710V	FKM (viton type) O-Ring for Seal Assembly	1
N/S	12882A	Bearing Pedestal	1
N/S	12099	7/16" - 14 x 1.25" HHCS	1
N/S	12000A	5 Vane Impeller Repair Kit - includes REF 4 - 8, 10, 14, 18, 22, 23, & 12099	
N/S	12000AV	FKM (viton like) Impeller Repair Kit - includes REF 4-8, 10, 14, 18, 22, 23, & 12099	1
N/S	12999A	Pump Seal/O-Ring Kit - includes REF 4 - 7, 10, 18, 22, 23 & 12099	



3" BANJO POLY PUMP REPLACEMENT PARTS

N/S = Not Shown

REF	PART	DESCRIPTION	REQ'D
1	12713	Seal Assembly	1
1	12713V	FKM (viton Type) Seal Assembly w/316 SS Cup & Spring	1
2	12901	SS Rear Bracket Washer	1
3	12717	O-Ring for Screw Head	4
3	12717V	FKM (viton type) O-Ring for Screw Head	2
4	13712	Body Assembly	1
5	13702	Poly Pump Volute	1
6	13771	4 Vane Impeller	1
7	12705	Poly Pump Check Valve	1
7	12705V	FKM (viton type) Pump Check Valve	1
8	12774VA	Impeller Bolt Gasket	1
9	12900	SS Upper Volute Screw	4
10	12725	SS Volute Screws	2
11	12719A	Body O-Ring	1
11	12719AV	FKM (viton type) Body O-Ring	8
12	12754	O-Ring Segment	1
12	12754V	FKM (viton type) O-Ring Segment	1
13	12720	SS Body Screws	10
14	V07018	SS Locker Washers	10
15	V07019	SS Body Nuts	10
16	12902A	Impeller Key	1

REF	PART	DESCRIPTION	REQ'D
17	13777	Prime/Drain Plug	2
18	13778	Prime/Drain Plug O-Ring	2
18	13778V	FKM (viton type) Prime/Drain Plug O-Ring	2
19	12703A	Poly Pump Rear Bracket	1
20	12710	O-Ring for Seal Assembly	1
20	12710V	FKM (viton type) O-Ring for Seal Assembly	1
21	12765A	SS Impeller Bolt 5/16 x 24 x 1.12 (300PH-6)	1
21	13765	SS Impeller Bolt 3/8 x 24 x 1.75 (300P11PRO)	1
22	12715A	SS Bracket Screws	4
23	15751	Rear Bracket Shim	1
24	12716	Poly Pump Slinger	1
25	12775A	Impeller Hex Nut	1
N/S	12882A	Bearing Pedestal	1
N/S	12099	7/16"-14 x 1.25" HHCS	1
N/S	13000	4 Vane Impeller Repair Kit (Items 1, 3, 6-8, 11, 12, 18, 20, 24 & 12099)	1
N/S	13000V	4 Vane Impeller FKM (viton type) Repair Kit (Items 1, 3, 6-8, 11, 12, 18, 20, 24 & 12099)	1
N/S	13999	Pump Seal/O-Ring Kit (Items 1, 3, 8, 11, 12, 18, 20, 24 & 12099)	1
N/S	13999V	FKM (viton type) Pump Seal/O-Ring Kit (Items 1, 3, 8, 11, 12, 18, 20, 24 & 12099)	1