

## Gas Engine Powered Pumps



### WP-2065HL General Purpose 2" Water Pump

- 2" NPT inlet and outlet Aluminum Pump.
- Honda GX200 6.5HP engine with Oil Alert.
- 158 gallons per minute Maximum Flow.
- 82' Total Lift.
- Solids through pump not recommended.

PART	DESCRIPTION	PRICE(H)
WP-2065HL	2" Water Pump w/ Honda	CALL



### WP-3065HL General Purpose 3" Water Pump

- 3" NPT inlet and outlet Aluminum Pump.
- Honda GX200 6.5HP engine with Oil Alert.
- 264 gallons per minute Maximum Flow.
- 85' Total Lift.
- Solids through pump not recommended.

PART	DESCRIPTION	PRICE(H)
WP-3065HL	3" Water Pump w/ Honda	CALL



### 4" Water Transfer Pump w/ Honda GX390 Engine

- 4" male NPT inlet and outlet ports.
- Aluminum casing and H.D. Cast Iron impeller.
- 422 GPM maximum flow.
- 26' suction lift, 98' total lift.
- Honda 389cc engine features 6.8 litre fuel tank, recoil start, and low oil alert.

PART	DESCRIPTION	PRICE(H)
WP-4013HR	4" Water Pump w/ Honda	CALL



### 1" Water Transfer Pump w/ Powerease 79cc Engine

- 1" male NPT inlet and outlet ports.
- Aluminum impeller and casing.
- 42 GPM maximum flow.
- 20' suction lift, 85' total lift.
- Powerease engine features 2 litre fuel tank, recoil start, and low oil shutdown protection.

PART	DESCRIPTION	PRICE(H)
WP-1020R	1" Water Pump w/ Powerease	CALL



### WP-2070S 2" Water Pump

- 2" NPT inlet and outlet Aluminum Pump.
- Powerease 210CC engine with Oil Alert.
- 158 gallons per minute Total Flow.
- 82' Total Lift.
- Solids through pump not recommended.

PART	DESCRIPTION	PRICE(H)
WP-2070S	2" Pump w/ 210 CC engine	CALL



### WP-3070S 3" Water Pump

- 3" NPT inlet and outlet Aluminum Pump.
- Powerease 7HP engine with Oil Alert.
- 264 gallons per minute Total Flow.
- 85' Total Lift.
- Solids through pump not recommended.

PART	DESCRIPTION	PRICE(H)
WP-3070S	3" Pump w/ 7 HP engine	CALL



### HP-2065HR High Pressure 2" Transfer Pump

High pressure system operates at 65 PSI; ideal for lawn sprinkling and fire fighting.

- 2" NPT inlet and outlet Aluminum Pump.
- Honda GX200 6.5HP engine with Oil Alert.
- 126 gallons per minute Maximum Flow.
- 197' Total Lift (@ 85 PSI).
- Solids through pump not recommended.

PART	DESCRIPTION	PRICE(H)
HP-2065HR	2" High Pressure Pump	CALL



### TP-3013HM 3" Trash Pump

- 3" NPT inlet and outlet Aluminum Pump.
- Honda GX390 13HP engine with Oil Alert.
- 286 gallons per minute Maximum Flow.
- 98' Total Lift.
- Handles solids up to 1" diameter through pump.

PART	DESCRIPTION	PRICE(H)
TP-3013HM	3" Trash Pump w/ Honda	CALL



### TP-4013HM 4" Trash Pump

- 4" NPT inlet and outlet Aluminum Pump.
- Honda GX390 13HP engine with Oil Alert.
- 506 gallons per minute Maximum Flow.
- 95' Total Lift.
- Handles solids up to 1" diameter through pump.

PART	DESCRIPTION	PRICE(H)
TP-4013HM	4" Trash Pump w/ Honda	CALL

# Gas Engine Powered Pumps



### 2" High Pressure/Firefighting Pump w/ Powerease 210cc Engine

- 2" male NPT inlet and outlet ports.
- Aluminum impeller and casing.
- 126 GPM maximum flow, 85 PSI Outlet Pressure.
- 26' suction lift, 197' total lift.
- Powerease engine features 3.6 litre fuel tank, recoil start, and low oil shutdown protection.

PART	DESCRIPTION	PRICE(H)
HP-2070R	2" HP Pump w/ Powerease	CALL



### 2" High Pressure Pump w/ Honda GX390 Engine

- 2" male NPT inlet and outlet ports.
- Heavy Duty Aluminum impeller & Aluminum casing.
- 140 GPM maximum flow; 145 PSI Outlet Pressure.
- 26' Suction lift, 330' total lift.
- Honda GX390 (389cc) engine features recoil start, low oil alert, and 6.8L (1.8 USG) fuel tank capacity.

PART	DESCRIPTION	PRICE(H)
HP-2013HR	2" HP Pump w/ Honda	CALL



### 2" Semi-Trash Pump w/ Honda GX200 Engine

- 2" male NPT inlet and outlet ports.
- 125 GPM maximum flow.
- 26' suction lift, 82' total lift.
- Handles up to 5/8" solids.
- Honda 196cc engine features 3.1 litre fuel tank, recoil start, and low oil alert.

PART	DESCRIPTION	PRICE(H)
TP-2065HT	2" Semi-Trash Pump w/ Honda	CALL



### Suction Hose Assembly – "C" Camlock x MNPT

Our standard, general-purpose PVC suction hose. It is flexible, lightweight, non-marking, and resistant to mild chemical solutions. Assemblies come with a "C" Female Cam-lock and galvanized MNPT nipple.

- 20-foot hose length.
- Fittings secured with double band clamps.

PART	DESCRIPTION	PRICE(F)
PVCS112CM20	1½" Suction Hose Assembly	92.25
PVCS2CM20	2" Suction Hose Assembly	118.90
PVCS3CM20	3" Suction Hose Assembly	220.20
PVCS4CM20	4" Suction Hose Assembly	314.65
PVCS6CM20	6" Suction Hose Assembly	745.85



### Heavy Duty Bronze Foot Valve

- Includes perforated stainless-steel strainer.

PART	DESCRIPTION	PRICE(F)
FV100	Bronze Foot Valve 1" FNPT	27.15
FV112	Bronze Foot Valve 1½" FNPT	50.25
FV200	Bronze Foot Valve 2" FNPT	85.70
FV300	Bronze Foot Valve 3" FNPT	519.65
FV400	Bronze Foot Valve 4" FNPT	610.05

Other sizes available; please inquire.



### 3" Semi-Trash Pump w/ Honda GX200 Engine

- 3" male NPT inlet and outlet ports.
- 264 GPM maximum flow.
- 26' suction lift, 85' total lift.
- Handles up to 1" solids.
- Honda 196cc engine features 3.1 litre fuel tank, recoil start, and low oil alert.

PART	DESCRIPTION	PRICE(H)
TP-3065HR	3" Semi-Trash Pump w/ Honda	CALL



### Lay-Flat Hose Assembly – "C" & "E" Camlocks

Assemblies are lightweight, economical PVC hoses that flatten and roll up tightly when not in use. designed for applications where external abuse is limited. Used widely for irrigation, construction, flood protection, and municipal applications.

- Assemblies are supplied with female "C" and male "E" aluminum cam-locks.
- Fittings secured with double band clamps.
- Available in 50-foot and 100-foot lengths.

PART	DESCRIPTION	PRICE(F)
PVCL112CE50	1½" x 50' Lay-flat Assembly	62.70
PVCL2CE50	2" x 50' Lay-flat Assembly	70.20
PVCL3CE50	3" x 50' Lay-flat Assembly	114.60
PVCL4CE50	4" x 50' Lay-flat Assembly	184.00
PVCL6CE50	6" x 50' Lay-flat Assembly	368.25
PVCL112CE100	1½" x 100' Lay-flat Assembly	110.50
PVCL2CE100	2" x 100' Lay-flat Assembly	140.15
PVCL3CE100	3" x 100' Lay-flat Assembly	215.35
PVCL4CE100	4" x 100' Lay-flat Assembly	317.90
PVCL6CE100	6" x 100' Lay-flat Assembly	540.70



### PVC Foot Valves

PART	DESCRIPTION	PRICE(F)
FVPVC1000	PVC Foot Valve 1" FNPT	CALL
FVPVC1500	PVC Foot Valve 1½" FNPT	CALL
FVPVC2000	PVC Foot Valve 2" FNPT	CALL
FVPVC3000	PVC Foot Valve 3" FNPT	CALL

Other sizes available; please inquire.



### 4" Trash Pump w/ Powerease 420cc Engine

- 4" male NPT inlet and outlet ports.
- Cast Iron impeller and aluminum casing.
- 580 GPM max. flow; 26' suction lift, 95' total lift.
- Handles up to 1" solids.
- Powerease engine features 3.6 litre fuel tank, recoil start, and low oil shutdown protection.

PART	DESCRIPTION	PRICE(H)
TP-4015RM	4" Trash Pump w/ Powerease	CALL

# Poly Pumps **HYPRO**



**1542P-5SP 2" Poly Pump**

- Features 5-Vane impeller and 6.5 HP PowerPro engine.
- EPDM mechanical seal and inlet valve.
- Low oil sensor on engine.
- Maximum suction lift of 25 feet.
- 2" Female NPT inlet and outlet ports.

PART	DESCRIPTION	PRICE (C)
1542P-5SP	2" Poly Pump (5-vane) w/ 6.5 HP PowerPro engine	<b>795.40</b>
3430-0690	Pump head kit for 1542P-3SP	<b>361.60</b>
3430-0691	Pump head kit for 1542P-5SP (unassembled)	<b>369.70</b>
3430-0635	Seal kit for 1542P-3SP / 1542P-5SP pumps	<b>CALL</b>



**9342P & 9343P Series Hydraulically-Driven Poly Pumps**

- Polypropylene Housing with either 2" Female NPT or 3" Female NPT ports.
- 2" models – Up to a Maximum 206 GPM / 60 PSI. See performance chart below.
- 2" models – Up to a Maximum 484 GPM / 58 PSI. See performance chart below.
- Pump Seals – EPDM Mechanical.
- Suction Lift – Maximum 25 feet.
- Poly impeller with Stainless Steel insert.

PART	DESCRIPTION	PRICE (C)
9342P-HM1C-5SP	2" Hydraulic Poly Pump – 10 GPM motor capacity	<b>1442.35</b>
9342P-HM5C-5SP	2" Hydraulic Poly Pump – 13 GPM motor capacity	<b>1442.35</b>
9343P-GM6-SP	3" Hydraulic Poly Pump – 8 to 11 GPM motor capacity	<b>2232.25</b>
9343P-GM10-SP	3" Hydraulic Poly Pump – 12 to 16 GPM motor capacity	<b>2232.25</b>

**9342 Series 2" Pump Performance**

9342P-HM1C-5SP							
Hyd. Flow GPM	GPM @ 0 PSI	GPM @ 10 PSI	GPM @ 20 PSI	GPM @ 30 PSI	GPM @ 40 PSI	GPM @ 50 PSI	GPM @ 58 PSI
8	165	145	122	95	57	-	-
9	185	166	144	119	86	0	-
10	200	184	164	141	114	80	0

9342P-HM5C-5SP							
Hyd. Flow GPM	GPM @ 0 PSI	GPM @ 10 PSI	GPM @ 20 PSI	GPM @ 30 PSI	GPM @ 40 PSI	GPM @ 50 PSI	GPM @ 60 PSI
9	175	154	123	84	0	-	-
10	192	174	149	118	76	0	-
11	206	189	169	145	117	79	0

**9343 Series 3" Pump Performance**

9343P-GM6-SP													
Performance	Feet	0	12	23	35	46	58	69	81	92	104	116	127
	PSI	0	5	10	15	20	25	30	35	40	45	50	55
8 Gal/Min	GPM	342	316	284	240	176	67	-	-	-	-	-	-
9 Gal/Min	GPM	378	355	327	294	252	194	103	-	-	-	-	-
10 Gal/Min	GPM	414	394	371	345	314	276	227	155	52	-	-	-
11 Gal/Min	GPM	450	433	414	392	368	340	307	265	210	128	28	-

9343P-GM10-SP													
Performance	Feet	0	12	23	35	46	58	69	81	92	104	116	127
	PSI	0	5	10	15	20	25	30	35	40	45	50	55
12 Gal/Min	GPM	364	340	310	274	227	157	46	-	-	-	-	-
13 Gal/Min	GPM	391	368	342	312	275	227	158	55	-	-	-	-
14 Gal/Min	GPM	415	395	373	348	318	282	236	170	74	-	-	-
15 Gal/Min	GPM	445	426	406	383	357	327	292	247	187	102	7	-
16 Gal/Min	GPM	484	466	446	425	401	374	344	309	266	211	139	47



**3" FNPT Inlet/Outlet**



**3" Manifold Inlet/Outlet**

**1543P Series 3" Poly Pumps**

- Three models powered by EPA 13.0 HP PowerPro engines – pull or electric start.
- 1543P-130ESP-01 model features 3" Manifold Inlet and Outlet ports.
- Self-priming pumps with a maximum lift of 25 feet.
- EPDM mechanical seal and inlet valve.

PART	DESCRIPTION	PRICE (C)
1543P-130ESP	3" Poly Pump w/ 13.0 HP PowerPro engine – Electric	<b>2363.10</b>
1543P-130ESP-01	3" Poly Pump w/Manifold Inlet/Outlet and 13.0 HP PowerPro engine – Electric start	<b>2435.70</b>
3430-0692	Pump head kit for 1543P pumps (unassembled)	<b>668.10</b>
3430-0757	Seal kit for 1543P series pumps	<b>243.45</b>
3430-0758	SHIM kit for 1543P pump and 3430-0693 KIT	<b>345.00</b>

**1542P / 1543P Series Pumps – Performance (US Gallons)**

MODEL	GPM @ 0 PSI	GPM @ 10 PSI	GPM @ 20 PSI	GPM @ 30 PSI	GPM @ 40 PSI	GPM @ 50 PSI	GPM @ 58 PSI
1542P-5SP	200	182	162	136	106	65	0
1543P-90ESP	373	343	291	231	156	53	0
1543P-130ESP	440	400	338	269	184	68	0



**9243P-SP 3" Poly Pedestal Pump**

- 3" Female NPT inlet and outlet ports.
- 1" keyed shaft; requires 12 HP motor to achieve maximum performance.
- 460 GPM maximum volume; 54 PSI maximum pressure.
- Maximum suction lift of 25 feet; maximum total head of 125 feet.
- Pump Seals – EPDM Mechanical.
- Poly impeller with Stainless Steel insert.

PART	DESCRIPTION	PRICE (C)
9243P-SP	3" Poly Pedestal Pump w/ 1" keyed shaft	<b>1400.70</b>

**9243P-SP Performance Chart**

PSI	Feet*	2900 RPM		3200 RPM		3500 RPM	
		GPM	HP	GPM	HP	GPM	HP
0	0	380	7.1	424	9.1	460	12.2
5	12	358	6.8	405	8.9	445	11.8
10	23	342	6.5	384	8.7	425	11.4
15	35	312	6.3	359	8.5	404	11.1
20	46	275	6.0	331	8.3	379	10.9
25	58	224	5.6	297	8.0	353	10.6
30	69	160	5.0	251	7.5	321	10.2
35	81	50	4.2	193	7.0	280	9.8
40	92	-	-	103	6.2	227	9.2
45	104	-	-	0	5.3	159	8.5
50	116	-	-	-	-	70	7.5



3" Model Shown

**Banjo 2" and 3" Poly Pumps w/ Honda Engines**

- EPDM seals and gaskets.
- Female NPT inlet and outlet ports.
- Poly 5-Vane impeller on 2" model and poly 4-Vane impeller on 3" model; poly casing on both models.
- 2" Model features Honda GX 5.5 HP engine and 3" model features Honda GX 6.5 HP engine.
- Both engines include low oil sensor.

PART	DESCRIPTION	PRICE(H)
200PH5	2" Banjo Poly Pump w/ 5.5 HP	CALL
300PH6	3" Banjo Poly Pump w/ 6.5 HP	CALL



**Banjo 2" and 3" Poly Pumps w/ 6.5 HP Briggs & Stratton Engines**

- EPDM seals and gaskets
- Available in either 2" or 3" Female NPT Inlet and outlet ports.
- Powered by a 6.5 HP Briggs & Stratton engine with pull start and oil alert.
- 216 US gallons per minute maximum.

PART	DESCRIPTION	PRICE(H)
200P6PRO	2" Banjo Poly Pump w/ 6.5 HP Briggs & Stratton Engine	CALL
300P6PRO	3" Banjo Poly Pump w/ 6.5 HP Briggs & Stratton Engine	CALL



**1537 Pump**

- Unit includes pump, engine and base.
- Honda 5.5 HP oil alert engine and Hypro 1538 pump.
- 1 1/2" inlet, 1 1/4" outlet.
- Nylon impeller.
- 82 GPM @ 40 PSI, 70 GPM @ 50 PSI, 50 GPM @ 60 PSI.

PART	DESCRIPTION	PRICE
1537	Pump/Engine – Honda 5.5HP	CALL
1537-U	Pump, Honda - Unassembled	CALL



2" Full Port Manifold Inlet / Outlet

**Banjo 2" Full Port Manifold Poly Pump w/ Honda 6.5 HP Engine**

- EPDM seals and gaskets.
- 2" Full Port Manifold inlet and outlet ports.
- High performance impeller for maximum flow – up to 255 gallons per minute!
- Honda GX series engine features low oil sensor.

PART	DESCRIPTION	PRICE(H)
M220PH6	2" Banjo FP Manifold Poly Pump w/ 6.5 HP Honda	CALL



2" Model Shown

**Banjo 2" and 3" Full Port Manifold Poly Pumps w/ Honda GX Series Engines**

- EPDM seals and gaskets.
- Full Port Manifold inlet and outlet ports.
- Precision molded construction
- 2" Model features Honda GX 5.5 HP engine and 3" model features Honda GX 6.5 HP engine.
- Both engines include low oil sensor.

PART	DESCRIPTION	PRICE(H)
M220PH5	2" Banjo Poly Pump w/ 5.5 HP	CALL
M300PH6	3" Banjo Poly Pump w/ 6.5 HP	CALL



**Ace GE660 Pump**

- Ace 5 1/2 HP Honda
- 1 1/2" inlet
- 1 1/4" outlet
- 6" impeller mounts to 3/4" shaft
- 110 GPM @ 20 PSI @ 3400 RPM
- 49 GPM @ 60 PSI @ 3400 RPM

PART	DESCRIPTION	PRICE
GE660	Pump/Engine – Honda 5.5HP	CALL
GE660-U	Pump, Honda - Unassembled	CALL



**Poly Check Valve**

- 2" or 1 1/2".
- Available with or without check valve.

PART	DESCRIPTION	PRICE (F)
FVPP2	2" Strainer C/W Check	137.20
FVPP2LC	2" Strainer Less Check	71.30
100750	2" NPT Female x Hose Insert	8.20
504019	2" Check Valve	65.90
2452067	2" NPT Female x 1 1/2" NPT Male Adapter	13.20
100640	1 1/2" NPT Female x 1 1/2" Hose Insert	8.30



**Metal Strainer**

- NPT female threads.

PART	SIZE	PRICE (F)
SUCTION2	2" FPT Steel Strainer	24.05
SUCTION3	3" FPT Steel Strainer	37.45
SUCTION4	4" FPT Steel Strainer	42.15



**Floating Filter**

- 2" hose connection.
- Floats just below water level.
- Keeps suction hose off bottom.

PART	DESCRIPTION	PRICE (H)
FLOAT	2" Floating Pond Filter	132.50

# Pumps and Foot Valves

## TrunkPump™

TrunkPump turns pumping into an easy one-person job and saves time, money and labour because your tractor does all the hard work.

The **TP-2PTP** high-pressure self-priming pump is designed specifically irrigation or high head / pressure applications where moderate volume is required.

Other TrunkPump models available for water transfer / dewatering applications.



### TP-2PTP 2" High Pressure Pump

- Die Cast, Self-priming PTO-powered centrifugal Aluminum Pump
- 120+ GPM; 18 feet' of suction head, 88 PSI (75 PSI @ 30 GPM)
- Silicone Carbide seal
- Heavy-duty steel construction.

PART	DESCRIPTION	PRICE (G)
TP-2PTP	2" HP PTO-Pump	CALL



### Hunter® PSR-22 Pump Start Relay

A reliable and economical pump start relay for irrigation systems with an electric pump that require pump activation at the controller. Suitable for conventional wiring or 2-wire decoder activation; allows for flexible installation options.

- Lockable, All-weather Enclosure
- 24VAC flying leads makes connection to the controller quick and easy.
- Single Phase 2HP @ 110VAC; 3HP @ 230VAC
- Dimensions: 6½" H x 7½" W x 4½" D

PART	DESCRIPTION	PRICE (F)
PSR-22	Pump Start Relay – single phase	CALL

NOTE: Other models available – please inquire.



### HP-2065HR High Pressure 2" Transfer Pump

- High pressure system operates at 65 PSI; ideal for lawn sprinkling and fire fighting.
- 2" NPT inlet and outlet Aluminum Pump.
  - Honda GX200 6.5HP engine with Oil Alert.
  - 126 gallons per minute Maximum Flow.
  - 197' Total Lift (@ 85 PSI).
  - Solids through pump not recommended.

PART	DESCRIPTION	PRICE(H)
HP-2065HR	2" High Pressure Pump	CALL



### HP-2013HR High Pressure Transfer Pump

- The HP-2013HR pump with Honda engine is an excellent choice for irrigation or as a firefighting pump.
- 2" Male NPT inlet and outlet Aluminum Pump.
  - Honda GX390 13HP engine with Oil Alert.
  - 140 gallons per minute Maximum Flow.
  - 330' Total Lift (@ 145 PSI).
  - Solids through pump not recommended

PART	DESCRIPTION	PRICE(H)
HP-2013HR	2" High Pressure Pump	CALL



### PVC Foot Valves

PART	DESCRIPTION	PRICE (E)
FVPVC0750	¾"	CALL
FVPVC1000	1"	CALL
FVPVC1250	1¼"	CALL
FVPVC1500	1½"	CALL
FVPVC2000	2"	CALL
FVPVC3000	3"	CALL



### Heavy Duty Bronze Foot Valve

- Includes perforated stainless steel strainer.

PART	DESCRIPTION	PRICE (F)
FV034	¾"	20.40
FV100	1"	27.15
FV114	1¼"	37.35
FV112	1½"	50.25
FV200	2"	85.70
FV300	3"	519.65
FV400	4"	610.05



Foot Valve



Leather Flapper

### Cast Iron Foot Valves

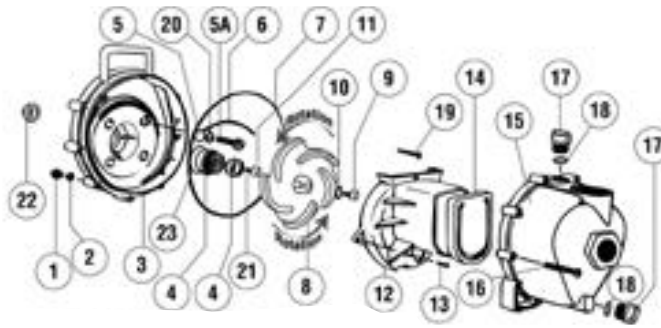
PART	DESCRIPTION	PRICE (E)
FVCI-2	2" Foot Valve	62.65
FVCI-3	3" Foot Valve	113.75
FVCI-4	4" Foot Valve	197.50
LEATHER2	2" Leather Flapper	15.25
LEATHER3	3" Leather Flapper	19.30
LEATHER4	4" Leather Flapper	26.25
LEATHER6	6" Leather Flapper	58.45



### Poly Check Valve

- 2" or 1½".
- Available with or without check valve.

PART	DESCRIPTION	PRICE (F)
FVPP2	2" Strainer C/W Check	137.20
FVPP2LC	2" Strainer Less Check	71.30
100750	2" NPT Female x Hose Insert	8.20
504019	2" Check Valve	65.90
2452067	2" NPT Female x 1½" NPT Male Adapter	13.20
100640	1½" NPT Female x 1½" Hose Insert	8.30

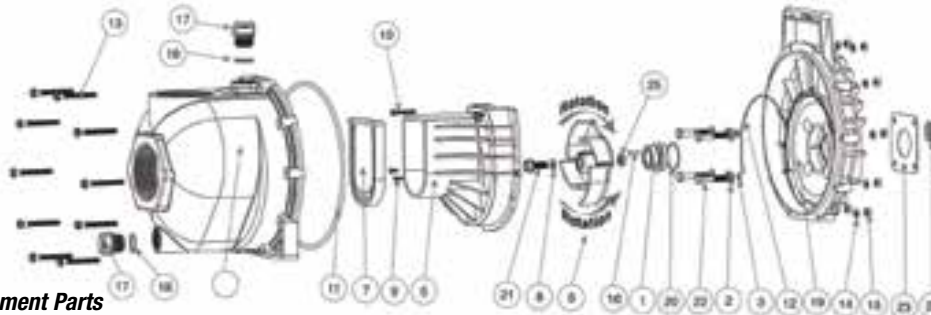


**2" Banjo Poly Pump Replacement Parts**

N/S = Not Shown

REF	PART	DESCRIPTION	REQ'D	PRICE (F)
1	V07019	SS Body Nuts	10	1.65
2	V07018	SS Lock Washers	10	1.65
3	12703A	Poly Pump Rear Bracket	1	98.60
4	12713	Seal Assembly	1	48.30
4	12713V	FKM (viton type) Seal Assembly w/316 SS Cup and Spring	1	80.30
5	12717	O-Ring for Screw Head	4	1.05
5	12717V	FKM (viton type) O-Ring for Screw Head	2	1.25
5A	12715A	SS Bracket Screws	4	4.20
6	12754	O-Ring Segment	1	6.65
6	12754V	FKM (viton type) O-Ring Segment	1	10.70
7	12719A	Body O-Ring	1	15.75
7	12719AV	FKM (viton type) Body O-Ring	8	70.15
8	12772	5 Vane Impeller	1	46.25
9	12765A	SS Impeller Bolt	1	19.85
10	12774VA	Impeller Bolt Gasket	1	1.80
11	12775A	Impeller Hex Nut	1	15.75
12	12702A	Poly Pump Volute	1	74.20
13	12725	SS Volute Screws	2	4.20
14	12705	Poly Pump Check Valve	1	17.80
14	12705V	FKM (viton type) Pump Check Valve	1	121.95

REF	PART	DESCRIPTION	REQ'D	PRICE (F)
15	12712A	Body Assembly	1	152.45
16	12720	SS Body Screws	10	4.20
17	12777	Prime/Drain Plug	2	3.40
18	UV15163	Prime/Drain Plug O-Ring	2	1.60
18	UV15163V	FKM (viton type) Prime/Drain Plug O-Ring	1	6.45
19	12900	SS Upper Volute Screw	4	1.75
20	12901	SS Rear Bracket Washer	1	1.05
21	12902A	Impeller Key	1	2.00
22	12716	Poly Pump Slinger	1	6.65
23	12710	O-Ring for Seal Assembly	1	4.20
23	12710V	FKM (viton type) O-Ring for Seal Assembly	1	10.70
N/S	12882A	Bearing Pedestal	1	239.95
N/S	12099	7/16" - 14 x 1.25" HHCS	1	4.20
N/S	12000A	5 Vane Impeller Repair Kit - includes REF 4 - 8, 10, 14, 18, 22, 23, & 12099		146.00
N/S	12000AV	FKM (viton like) Impeller Repair Kit - includes REF 4-8, 10, 14, 18, 22, 23, & 12099	1	246.50
N/S	12999A	Pump Seal/O-Ring Kit - includes REF 4 - 7, 10, 18, 22, 23 & 12099		80.30



**3" Banjo Poly Pump Replacement Parts**

N/S = Not Shown

REF	PART	DESCRIPTION	REQ'D	PRICE (F)
1	12713	Seal Assembly	1	48.30
1	12713V	FKM (viton Type) Seal Assembly w/316 SS Cup & Spring	1	80.30
2	12901	SS Rear Bracket Washer	1	1.05
3	12717	O-Ring for Screw Head	4	1.05
3	12717V	FKM (viton type) O-Ring for Screw Head	2	1.25
4	13712	Body Assembly	1	223.55
5	13702	Poly Pump Volute	1	80.30
6	13771	4 Vane Impeller	1	65.05
7	12705	Poly Pump Check Valve	1	17.80
7	12705V	FKM (viton type) Pump Check Valve	1	121.95
8	12774VA	Impeller Bolt Gasket	1	1.80
9	12900	SS Upper Volute Screw	4	1.75
10	12725	SS Volute Screws	2	4.20
11	12719A	Body O-Ring	1	15.75
11	12719AV	FKM (viton type) Body O-Ring	8	70.15
12	12754	O-Ring Segment	1	6.65
12	12754V	FKM (viton type) O-Ring Segment	1	10.70
13	12720	SS Body Screws	10	4.20
14	V07018	SS Locker Washers	10	1.65
15	V07019	SS Body Nuts	10	1.65
16	12902A	Impeller Key	1	2.00

REF	PART	DESCRIPTION	REQ'D	PRICE (F)
17	13777	Prime/Drain Plug	2	5.00
18	13778	Prime/Drain Plug O-Ring	2	2.25
18	13778V	FKM (viton type) Prime/Drain Plug O-Ring	2	3.45
19	12703A	Poly Pump Rear Bracket	1	98.60
20	12710	O-Ring for Seal Assembly	1	4.20
20	12710V	FKM (viton type) O-Ring for Seal Assembly		10.70
21	12765A	SS Impeller Bolt 5/16 x 24 x 1.12 (300PH-6)	1	19.85
21	13765	SS Impeller Bolt 3/8 x 24 x 1.75 (300P11PRO)	1	19.85
22	12715A	SS Bracket Screws	4	4.20
23	15751	Rear Bracket Shim	1	4.45
24	12716	Poly Pump Slinger	1	6.65
25	12775A	Impeller Hex Nut	1	15.75
N/S	12882A	Bearing Pedestal	1	239.95
N/S	12099	7/16"-14 x 1.25" HHCS	1	4.20
N/S	13000	4 Vane Impeller Repair Kit (Items 1, 3, 6-8, 11, 12, 18, 20, 24 & 12099)	1	127.10
N/S	13000V	4 Vane Impeller FKM (viton type) Repair Kit (Items 1, 3, 6-8, 11, 12, 18, 20, 24 & 12099)	1	244.70
N/S	13999	Pump Seal/O-Ring Kit (Items 1, 3, 8, 11, 12, 18, 20, 24 & 12099)	1	80.30
N/S	13999V	FKM (viton type) Pump Seal/O-Ring Kit (Items 1, 3, 8, 11, 12, 18, 20, 24 & 12099)	1	121.95