



50800 Spray Wand

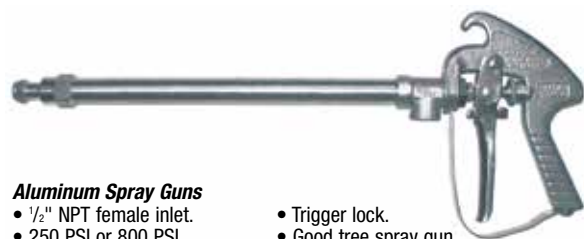
PART	DESCRIPTION	PRICE (F)
50800-1/4-15PP	Trigger 15" Poly 1/4" Hose Barb	24.20
50800-3/8-15PP	Trigger 15" Poly 3/8" Hose Barb	24.20
50800-1/4-21AL	Trigger 21" Aluminum 1/4" Hose Barb	28.95
50800-3/8-21AL	Trigger 21" Aluminum 3/8" Hose Barb	28.95
50786PP-1/4	1/4" Replacement Hose Barb for 50800 Trigger	3.90(B)
50786PP-3/8	3/8" Replacement Hose Barb for 50800 Trigger	3.90(B)
7717-2/016VI	O-ring - Viton (use with above 50786PP-**)	2.70(B)



Adjustable ConeJet

• 11/16 Thread

PART	DESCRIPTION	PRICE (F)
38720PPBX8	Grey - .47 GPM @ 40 PSI	10.15
38720PPBX12	Brown - .69 GPM @ 40 PSI	10.15
38720PPBX18	Orange - .92 GPM @ 40 PSI	10.15
38720PPBX26	Blue - 1.2 GPM @ 40 PSI	10.15



Aluminum Spray Guns

- 1/2" NPT female inlet.
- 250 PSI or 800 PSI.
- Trigger lock.
- Good tree spray gun.

PART	DESCRIPTION	PRICE (F)
43LAL6	250 PSI Gun	210.30
43HAL6	800 PSI Gun	212.55
AB43AL	Repair Kit	60.20
10566AL	Nozzle Housing	27.45
6492AL	Inlet Body	45.70



Telescoping Wand

PART	DESCRIPTION	PRICE (F)
W500	Telescoping Wand 3/8" Hose	27.40



Aluminum Wand

- 22" barrel.
- Adjustable spray from cone to pencil.
- 3/4" GH inlet, twist on/off.
- 800 PSI max.

PART	DESCRIPTION	PRICE (F)
143ALGH6	Gunjet	137.05
AB143AL	Repair Kit	45.40



Jet Stream Spray Gun w/ 23" Barrel

- Adjustable Spray Pattern
- Female Garden Hose Inlet
- Up to 8 GPM and 400 PSI
- 120°F Max Fluid Temperature

PART	DESCRIPTION	PRICE (H)
SG-1005	Jet Stream Spray Gun	59.40



Brass Extensions

- 1/16" thread inlet/outlet.
- Series 9527 - 1000 PSI insulated.
- Series 6671 & 7715 - 250 PSI.

PART	DESCRIPTION	PRICE (B)
6671-08	8" Curved Extension 250 PSI	21.55
6671-18	18" Curved Extension 250 PSI	26.25
6671-24	24" Curved Extension 250 PSI	27.10
6671-30	30" Curved Extension 250 PSI	30.65
6671-36	36" Curved Extension 250 PSI	34.85
6671-48	48" Curved Extension 250 PSI	40.30
7715-08	8" Straight Extension 250 PSI	18.45
7715-18	18" Straight Extension 250 PSI	23.20
7715-24	24" Straight Extension 250 PSI	25.05
7715-30	30" Straight Extension 250 PSI	30.05
7715-36	36" Straight Extension 250 PSI	31.70
7715-48	48" Straight Extension 250 PSI	38.40
9527-08	8" Curved Extension 1000 PSI	58.00
9527-18	18" Curved Extension 1000 PSI	67.10
9527-24	24" Curved Extension 1000 PSI	68.75
9527-36	36" Curved Extension 1000 PSI	89.10
9527-48	48" Curved Extension 1000 PSI	96.40



Tree Gun

- 17" barrel.
- 1/2" hose inlet.
- 1200 PSI max.

PART	DESCRIPTION	PRICE (F)
TREEGUN	Tree Spray Gun	347.00
9920-KIT10/11	Repair Kit	47.00
HB12	1/2" Hose Barb	8.95



Low Pressure Gunjets

- 24" barrel.
- 250 PSI max.
- Non-drip design with shut off at tip.
- Series 30L - brass wand with nylon trigger.

PART	DESCRIPTION	PRICE (B)
30L-1/4	Gunjet (No Extension)	95.05
30L-22425-08	8" Gunjet	149.85
30L-22425-18	18" Gunjet	159.65
30L-22425-24	24" Gunjet	169.25
30L-22425-36	36" Gunjet	194.40
30L-22425-48	48" Gunjet	218.85



High Pressure Spray Gun w/ Trigger Handle

- Adjustable Pattern - Cone to Stream
- 1/2" Female NPT Inlet Port
- Maximum 8 GPM / 800 PSI
- 13" or 22" Barrel length option

PART	DESCRIPTION	PRICE (H)
SG-1700-13	High Pressure Trigger Spray Gun - 13" barrel	72.10
SG-1700-22	High Pressure Trigger Spray Gun - 22" barrel	72.10



4688 Brass Trigger Valve

- 1/4" FNPT inlet, 1/16" nozzle tread outlet.
- Trigger lock.
- 2 GPM max., 250 PSI max.

PART	DESCRIPTION	PRICE (B)
4688	Trigger	72.25
AB4688	Repair Kit	23.00
6466	Same as 4688 Except no trigger lock	77.90



6590 Brass Trigger Valve

- 1/4" FNPT inlet/outlet.
- 2 GPM max., 250 PSI max.

PART	DESCRIPTION	PRICE (B)
6590	Trigger	72.70
AB6590	Repair Kit	16.70



4754



4725

Brass Gun Handles

- Both fit 4688, 6466, 6590 triggers.

PART	DESCRIPTION	PRICE (B)
47541/4	Handle - 3/4" GH x 1/4" Threads	24.50
47251/4	Handle - 1/4" Threads	15.85



GH Inlet/Outlet



1/4" Inlet/Outlet

Brass Swivels

PART	DESCRIPTION	PRICE
11740	GH Thread Inlet/Outlet	35.15(H)
11990-10	1/4" Inlet/Outlet	25.80(B)



Eductor Agitators

- Allows small pumps to circulate large volumes of liquid.
- Manufactured of glass-filled polypropylene for excellent corrosion and chemical resistance.
- Large flow opening minimizes plugging.
- Available in 3/8" or 1/2" (M) pipe thread inlet connection.

PART	DESCRIPTION	PRICE (B)
Y33180PP	Eductor Nozzle	91.60
Y9270PP	Eductor Nozzle	91.60



Brass Diaphragm Shut-Off

PART	DESCRIPTION	PRICE (B)
4664	1/8" Inlet, 1/16" Outlet	43.20



Brass End Cap Sub-Assembly

PART	DESCRIPTION	PRICE (B)
9758	Brass	7.15



Brass Retainer

PART	DESCRIPTION	PRICE (B)
4624	Fits 4664 Check Valve	4.40



Diaphragm Fairprene

PART	DESCRIPTION	PRICE (B)
4620FA	Fits 4664 Check Valve	.70

TeeJet[®] Lawn Spray Guns



Model 25660

Features:

- Standard gun (part # 256601.5) comes complete with grey 4 GPM @ 20 PSI nozzle.
- Interchangeable nozzle tips are colour-coded for easy identification of nozzle tip size.
- Nozzle tips provide a 45° full cone "showerhead" spray pattern.
- Convenient trigger lock for continuous spraying.
- Options available: hose shank swivel for inlet connection and extension wands (15" or 24") and adapters for low-volume and spot spraying.
- Maximum 200 PSI operating pressure.
- Made of Nylon w/ Viton® O-rings and stainless steel springs.

PART	DESCRIPTION	PRICE(B)
256601.5	Fertilizer Spray Gun	148.40
AB25660	Repair kit for gun	29.05
25990	Swivel 3/4" MNPT x 1/2" hose barb	19.25
25657	Adapter to accept wands	32.80
2266515PP	15" Wand assembly	17.15
2266524PP	24" Wand assembly	28.55
22664PP	Straight adapter	2.85
22673PPB	45° Adapter	2.75
256701.5	Grey Nozzle – 4.0 GPM	21.50
256703.0	Black Nozzle – 5.6 GPM	21.50
256704.0	Red Nozzle – 6.4 GPM	21.50

NOZZLE PERFORMANCE CHART				
PART NUMBER	CAPACITY (GPM) – VARIOUS PSI*			
	2 PSI	6 PSI	10 PSI	20 PSI
256701.5	1.4	2.3	2.9	4.0
256703.0	2.0	3.2	4.1	5.6
256704.0	2.3	3.7	4.7	6.4

*Pressure measured at spray nozzle





Homestead 3-PT. Sprayers

Features:

- Category I or II Hitch configuration available
- Sprayers come complete with Hypro Cast Series Roller Pump
- TeeJet manual 17Y Selector Valve for boom control standard on all models. Optional electric boom control upgrade is available
- 4 Point stand for ease of storage when not in use
- 1 Year Sprayer Warranty

1. Select Your Sprayer – PLEASE SPECIFY 540 or 1000 RPM

PART	DESCRIPTION	PRICE (I)
HOMESTEAD	50 US Gallon 3-PT. Sprayer	CALL
HOMESTEAD-HD110	110 US Gallon 3-PT. Heavy Duty Sprayer	CALL
HOMESTEAD-HD150	150 US Gallon 3-PT. Heavy Duty Sprayer	CALL

2. Select Your Optional Equipment

Homestead sprayer options give you the flexibility to customize your sprayer the way you need it. Five boom sizes (12' & 18' for 55 gallon sprayer) and 20', 30', & 45' for the 110 and 150 US gallon HD models or go boomless with your choice of either Hypro XT Series or Boominator™ spray nozzles.

PART	DESCRIPTION	PRICE (I)
BOOM12	Boom – 12 Foot Spray Pattern (20" spacing)	CALL
BOOM18	Boom – 18 Foot Spray Pattern (20" spacing)	CALL
BOOM20	Boom – 20 Foot Spray Pattern (20" spacing)	CALL
BOOM30	Boom – 30 Foot Spray Pattern (20" spacing)	CALL
BOOM45	Boom – 45 Foot Spray Pattern (20" spacing)	CALL
BOOMLESSHYPRO	Boomless kit w/ Hypro XT (Stainless) Nozzles	CALL
BOOMLESSBOOM	Boomless kit w/ Boominator™ Nozzles	CALL
ATVHR-H	Hose Reel, 30' Hose, Spray Wand, & Bracket	CALL
HOMESTEAD-EC	Electric Boom Control Upgrade	CALL



Homestead ATV Skid Mount Sprayers

Choose from two tank sizes (50 & 100 US Gallon) with either a Honda-driven Ace pump or a 12 V electric pump. Units as listed below do not include the boom, but you can order either the 12' or 18' wide standard boom or the boomless spray tip booms as indicated in the Homestead 3-PT sprayer above.

- 4 HP Honda engine with Ace Centrifugal pump (57 PSI max / 22 GPM max) or Delavan 12 Volt Electric pump (100 PSI max / 7 GPM).
- High quality plumbing parts from TeeJet and Banjo used.
- All units built standard with Manual controls (TeeJet Shut-off & regulating valves) and Hose Reel with Spray Wand with 30' of hose.
- The **ATV100EC** comes with TeeJet 744E Controller and a 3 bank of 430 Series valves.

PART	DESCRIPTION	PRICE (I)
ATV50	50 Gallon ATV Sprayer – 4 HP Honda / Ace Pump – NO BOOM	CALL
ATV100	100 Gallon ATV Sprayer – 4 HP Honda / Ace Pump – NO BOOM	CALL
ATV100EC	100 Gallon ATV Sprayer – 4 HP Honda / Ace Pump – NO BOOM	CALL
ATV100E	100 Gallon ATV Sprayer – 12V Electric Pump – NO BOOM	CALL



Chapin Pro XP Series Tank Sprayers

- Available in 1, 2, and 3 Gallon tank sizes for the lawn / landscaping professional.
- Viton Seals and Gaskets for use with a wide range of fertilizers and chemicals.
- Cushion grip shut-off with internal filter and lock-on trigger feature.
- SureSpray® in-tank anti-clog filter blocks debris from hose, trigger, and spray tip.
- Pressure relief valve built into translucent poly non-corrosive spray tank.

PART	DESCRIPTION	PRICE
26011XP	1 Gallon Pro XP Series Tank Sprayer	56.45 (G)
26021XP	2 Gallon Pro XP Series Tank Sprayer	60.70 (G)
26031XP	3 Gallon Pro XP Series Tank Sprayer	76.90 (G)
Chapin Pro XP Series Tank Sprayer Parts		
301631-1	Replacement Pump – Pro Series Sprayer	40.95 (F)
6-8130	Hose Assembly – Pro Series Sprayer	25.40 (F)
6-8219	20" Poly Wand (no nozzle) – Pro Series Sprayer	37.20 (F)
6-8131	Nozzle Assembly – Pro Series Sprayer	19.85 (F)
6-8138	Replacement Trigger for Pro Series Sprayer	22.20 (F)
6-4601	Seal and Gasket Kit – Pro Series Sprayer	29.20 (F)
6-4605	Pressure Relief Valve – Pro Series Sprayer	18.35 (F)
3-2694-11	Outlet Tube – Pro Series Sprayer	4.75 (F)



Chapin Industrial Series Sprayer

- 3-Gallon poly tank with wide mouth opening for easy filling and cleaning.
- Viton seals and gaskets designed for industrial and concrete applications.
- Compatible with most industrial chemicals.
- 18-Inch brass wand, nozzle, and shut-off with lock-on feature.
- Pressure relief valve; anti-clog filter.

PART	DESCRIPTION	PRICE(G)
22790XP	3-Gallon Sprayer	147.85



Chapin Lawn and Garden Sprayer

- 1-Gallon translucent tank with funnel top for easy filling and cleaning.
- Compatible with common fertilizers, weed killers, and pesticides.
- 12-Inch wand, 34-inch hose, adjustable nozzle, and comfortable spray handle.
- In-tank filter reduces clogging.

PART	DESCRIPTION	PRICE(I)
20000	1-Gallon Sprayer	22.35



SureSpray™ Series Tank Sprayers

- Available in 1, 2, and 3 Gallon tank sizes
- Multi-purpose sprayer designed for pesticides, fertilizers, and general cleaning
- Nitrile seals
- Translucent non-corrosive and durable spray tank
- Ergonomic pump handle and funnel top for ease of filling

PART	DESCRIPTION	PRICE
20010	1 Gallon SureSpray™ Series Tank Sprayer	31.95 (G)
20020	2 Gallon SureSpray™ Series Tank Sprayer	42.65 (G)
20030	3 Gallon SureSpray™ Series Tank Sprayer	53.45 (G)
Chapin SureSpray™ Series Tank Sprayer Parts		
6-7749	18" Poly Wand Extension (nozzle not included)	14.05 (F)
6-2001	Hose Assembly	17.10 (F)
6-2000	Replacement Trigger Assembly	13.40 (F)
6-6003	Poly Adjustable Nozzle	7.85 (F)
301128	Replacement Pump Assembly	16.60 (F)
6-1925	Seal and Gasket Set	20.90 (F)



Wand not included

Chapin 80° Spot Spray Shield Kit

- Fits most Chapin brand backpack and tank sprayers.
- Threads onto wand.
- Reduces spray drift damage on non-target plants.
- Cone shield, 80° spray tip, and body included in kit.

PART	DESCRIPTION	PRICE(G)
6-7773	Spray Shield Kit	31.15



Chapin 48 oz. Hand Sprayer

- 48 US oz poly non-corrosive tank
- Viton seals
- Adjustable cone spray nozzle
- SureSpray™ Anti-clog filter

PART	DESCRIPTION	PRICE(G)
1046	48 oz. Hand Sprayer	31.15



32 oz. Upside Down Sprayer

- Sprays in any position – even upside.
- Adjustable spray nozzle – fine mist to solid stream.

PART	DESCRIPTION	PRICE(G)
1105	Upside Down Sprayer	6.40



Chapin 63800 Wide Mouth Pro Series Piston Pump Backpack Sprayer

- 4 US gallon true capacity tank w/ extra large 6" easy-fill diameter opening.
- Viton™ Seals and Gaskets for chemical spraying.
- Strainer/filter basket helps keep debris out of tank.
- Cushion grip spray handle reduces hand fatigue.
- Adjustable padded shoulder and waist straps for the perfect fit and comfort.
- Pumping handle can be set for left or right hand use.
- Brass, poly fan, and poly cone nozzles included.
- 20" Poly spray wand extension.

PART	DESCRIPTION	PRICE (F)
63800	Wide Mouth Pro Series 4-Gallon Piston Pump Backpack Sprayer	155.25



Chapin 64800 Pro Series Diaphragm Pump Backpack Sprayer

- Diaphragm-style pump mechanism for spraying wettable powders.
- 4 US gallon true capacity with large 4" diameter opening for easy filling.
- Strainer/filter basket helps keep debris out of spray tank.
- Cushion grip spray handle reduces hand fatigue.
- Adjustable padded shoulder and waist straps for the perfect fit and comfort.
- Pumping handle can be oriented for either left or right hand use.
- Brass, poly fan, and poly cone nozzles included.
- Viton™ Seals and Gaskets for chemical spraying.

PART	DESCRIPTION	PRICE (F)
64800	Pro Series 4-Gallon Diaphragm Pump Backpack Sprayer	147.60



Chapin 63900 Commercial Duty Dual Displacement Pro Backpack Sprayer

- Dual displacement piston and diaphragm pump technology provides increased pressure (120+ PSI) and eliminates piston leaking.
- Self-cleaning JetClean design minimizes clogging.
- 4 US gallon true capacity.
- 6" Extra large diameter opening with strainer basket for easy, debris-free filling.
- Comfort trigger handle w/ serviceable filter.
- Viton™ Seals for chemical spraying.
- Comfortable back pad/double padded shoulder straps.
- Swing away left or right reversible pump handle.
- Brass, poly fan, and poly cone nozzles included.

PART	DESCRIPTION	PRICE (F)
63900	4-Gallon Professional Dual Displacement Backpack Sprayer	196.45



Chapin 24V Rechargeable Battery Powered Electric Backpack Sprayer

- 4 US Gallon poly solution tank.
- Powered by 24V Lithium Ion rechargeable Battery. (Base included.)
- One charge sprays up to two hours continuous (58 US gallons).
- Weighs 39% less than competitive units (9.8 lbs vs. 16 lbs).
- Sprays at 35 - 40 PSI.
- Equipped with Viton® seals and gaskets for chemical spraying.
- 6" Wide Mouth™ cap with strainer for easy, debris-free filling.
- Built-in carrying handle makes cap removal easy and carrying the unit a breeze.
- Uses the same 63800 Pro Series tank assembly, filters, and shut-off.
- Adjustable brass, poly fan, and poly cone nozzles included.

PART	DESCRIPTION	PRICE (F)
63924	Chapin 24V Backpack Sprayer w/ charger & battery	323.50
6-8238	24V Lithium Ion Rechargeable Battery (2.0Ah) and Charger Base Combo for 63924 Backpack Sprayer	79.40

Genuine Chapin Backpack Sprayer Parts, Repair Kits, and Accessories

PART	DESCRIPTION	PRICE (F)
6-8224	Piston Diaphragm Pump Assembly – 63900	89.00
6-8225	Piston Collar Assembly – 63900	26.70
6-8180	Piston Pump Repair Seal Kit – 63800	31.45
6-8120B	Repair Kit for 6-8138 Trigger Assembly – All Chapin models	13.00
6-8138	Trigger Assembly – All Chapin models	22.20
6-8219	20" Poly Spray Wand Assembly – 63800, 64800, 63924	37.20
6-8122	Brass Adjustable Nozzle – All Chapin models	13.55
6-8148	Nozzle Elbow Assembly – All Chapin models	7.35
6-8105	48" Hose Assembly – All Chapin models	20.90
6-8146	4" Filter Basket with Cap – 64800	18.80

PART	DESCRIPTION	PRICE (F)
6-8146-1	6" Filter Basket with Cap – 63800, 63900, 63924	33.20
6-8183	Complete Diaphragm Pump Assembly – 64800	69.70
6-8179	Piston/Cup/Linkage Assembly – 63800	47.95
6-8178	Cylinder Assembly – 63800	21.60
6-8151	Relief Valve – All Chapin models	17.65
6-8137	Carry Strap – 63800, 64800, 63924	25.50
6-8152	Wand Clip – 63800, 64800, 63924	2.05
6-7780	2 Nozzle Poly Boom – All Chapin models	41.90
6-7781	3 Nozzle Poly Boom – All Chapin models	51.40
6-7773	Spot Spraying Cone Shield w/ Nozzle – All Chapin models	31.15



WorkHorse 25 Gallon Deluxe ATV Boomless Sprayer

- 25 US gallon poly tank with large fill mouth.
- Quick-detach 2-Nozzle spray boom with check valves and strainers.
- 12-Volt demand pump; 4.0 GPM – 45 PSI maximum pressure.
- 24 Foot total spray coverage.
- Shut-off valves to spray right or left side independently.
- Boom adjustable to 3 different heights.
- Deluxe pistol grip w/ 15' of hose and adjustable spray tip.
- Pressure gauge (adjustable pressure from 0 to 60 PSI).
- 8-Foot wiring harness with battery clips and switch.
- ATV mounting straps included.
- 2 Year Manufacturer's warranty from date of manufacture.

PART	DESCRIPTION	PRICE (H)
WH-ATV25BL	25 Gallon ATV Boomless Sprayer	593.55



Folds up for storage or transportation.

Shown mounted to WorkHorse Spot Sprayer - Sprayer not included.

Deluxe 7 Nozzle ATV Boom Kit

- Attaches / detaches to the WorkHorse Spot Sprayer using a Quick Mount system to convert unit for use on an ATV.
- 7-Nozzle fold-out boom w/ flat fan style spray tips, check valves, and strainers.
- Provides up to 140 inch total spray coverage.
- Spring loaded boom arms fold easily for storage or travel between spray sites.
- 2 Year Manufacturer's warranty from date of manufacture.

PART	DESCRIPTION	PRICE (H)
WH-ATV007BK	7 Nozzle ATV Boom Kit	209.95



Deluxe 2 Nozzle ATV Boom Kit

- Attaches / detaches to the WorkHorse Spot Sprayer using a Quick Mount system to convert unit for use on an ATV.
- 2-Nozzle boom w/ check valves and strainers provides up to 80 inch total spray coverage.
- 2 Year Manufacturer's warranty from date of manufacture.

PART	DESCRIPTION	PRICE (H)
WH-ATV002BK	2 Nozzle ATV Boom Kit	99.95



WorkHorse 25 Gallon Deluxe Tow Behind Sprayer

- 25 US gallon poly tank with large fill mouth.
- 2-Nozzle break-away style boom with 80 inch spray coverage.
- 12-Volt demand pump; 2.0 GPM – 60 PSI maximum pressure.
- Deluxe pistol grip w/ 15' of hose and adjustable spray tip.
- Pressure gauge (adjustable pressure from 0 to 60 PSI).
- 8-Foot wiring harness with battery clips and switch.
- 4.10/3.50 x 6 Pneumatic tires.
- Heavy duty corrosion resistant frame.
- 2 Year Manufacturer's warranty from date of manufacture.

PART	DESCRIPTION	PRICE (H)
WH-LG25DTS	25 Gallon Tow Behind Sprayer	496.05



WorkHorse 25 Gallon Deluxe Spot Sprayer

- 25 US gallon poly tank with large fill mouth.
- Boom Ready – Add either the 2 nozzle or deluxe 7 nozzle boom kit.
- 12-Volt Demand pump; 2.0 GPM – 60 PSI maximum pressure.
- Deluxe pistol grip w/ 15' of hose and adjustable spray tip.
- Pressure gauge (adjustable pressure from 0 to 60 PSI).
- 8-Foot wiring harness with battery clips and switch.
- In-line Shut-off for quick On/OFF spraying.
- 2 Year Manufacturer's warranty from date of manufacture.

PART	DESCRIPTION	PRICE (H)
WH-LG25DSS	25 Gallon Spot Sprayer	317.95

WorkHorse Sprayer Parts and Accessories

- Need a part from your WorkHorse Sprayer? We can help!

PART	DESCRIPTION	PRICE
WH-101CA	Optional 12-Volt Car Power Adapter Kit	17.75(E)
WH-600117	In-line Strainer w/ Check Valve	4.20(H)
WH-600122	Y-Valve w/ Shut-Offs – FGH x MGH x MGH threads	8.25(H)
WH-600133	Spray Tank Lid – all models	12.95(H)
WH-600151	Spray Wand Clip	3.75(H)
WH-600156	Spray Wand & 15' Hose Assembly – complete	61.80(H)
WH-600185	Elbow Fitting – 3/8" Hose Barb x Quick Disconnect (QD)	2.75(H)
WH-600248	Boomless Spray Nozzle – left side	56.55(H)
WH-600249	Boomless Spray Nozzle – right side	56.55(H)
WH-600211	Quick Disconnect (QD) Fitting – 2.0 GPM pump only	8.85(H)
WH-600212	Quick Disconnect (QD) Fitting – 4.0 GPM pump only	8.85(H)
WH-600216	In-line Shut-Off Valve – FGH x MGH thread	6.95(H)
WH-600223	Elbow Fitting – 3/8" hose barb x QD (4.0 GPM pump only)	3.95(H)
WH-640451	2.2 GPM 12-Volt Remco Pump	160.15(H)
WH-630031	5.0 GPM 12-Volt Remco Pump	284.05(H)
WH-600132	WorkHorse 25 US Gallon Tank w/ 6" Lid	131.85(H)



WorkHorse 40 & 60 Gallon Deluxe Tow Behind Sprayers

- 40 US gallon model features 2.2 GPM / 60 PSI max. Remco 12-Volt demand pump, 3-Section 5-nozzle boom w/ 110° fan spray tips; covers approx. 100".
- 60 US gallon model features 5.0 GPM / 60 PSI max. Remco 12-Volt demand pump, 3-Section 7-nozzle boom w/ 110° fan spray tips; covers approx. 140".
- Adjustable pressure range (0 to 60 PSI) – pressure gauge included.
- Deluxe pistol grip spray gun w/ 25' of hose and adjustable brass tip.
- 8-Foot wiring harness w/ battery clips and ON/OFF switch; commercial fuse.
- H.D. corrosion resistant frame; poly tank includes drain and 5" tethered lid.

PART	DESCRIPTION	PRICE (H)
WH-LG425DTS	40 Gallon Tow Sprayer w/ 5-nozzle boom	983.85
WH-LG657DTS	60 Gallon Tow Sprayer w/ 7-nozzle boom	1129.90



WorkHorse 40 Gallon 3-Point Sprayer

- 40 US gallon poly tank with drain and large fill mouth – 5 inch tethered lid.
- 5-Nozzle boom with standard 110° flat fan spray tips – 100" total spray coverage.
- Deluxe pistol grip spray gun w/ 25' of hose and adjustable brass tip.
- 12-Volt demand Remco pump: 2.2 GPM – 60 PSI maximum pressure.
- Adjustable pressure range (0 to 60 PSI) – pressure gauge included.
- 8-Foot wiring harness w/ battery clips and ON/OFF switch; commercial grade fuse.

PART	DESCRIPTION	PRICE (H)
WH-LG4253PT	40 Gallon 3-Point 5-Nozzle Sprayer w/ spray gun	985.65



*WH-BK007HM Boom Shown
(also sold separately)*

WorkHorse 40 or 60 Gallon Hitch Mount Skid Sprayer

- 40 or 60 Gallon poly tank with drain and large fill mouth; 5" tethered lid.
- Deluxe pistol spray grip with 25' of hose and adjustable brass tip.
- 12-Volt Remco Demand Pump: 2.2 GPM - 60 PSI maximum pressure.
- Adjustable pressure range (0 to 60 PSI); pressure gauge included.
- 8' Wiring harness with battery clips, ON/OFF switch with commercial-grade fuse.
- 40-Gallon model includes a 5-Nozzle heavy-duty folding boom (100" coverage) with exclusive hitch mount design featuring 300 degrees of adjustability; fits standard 2" hitch receiver.
- 60-Gallon model, same as above except with 7-Nozzle boom (140" coverage).

PART	DESCRIPTION	PRICE (H)
WH-UTV425HM	40 Gallon Hitch Mount Skid Sprayer	868.10
WH-UTV627HM	60 Gallon Hitch Mount Skid Sprayer	983.85



WorkHorse 60 Gallon Boomless Hitch Mount Sprayer

- 60 US gallon poly tank with drain and 5" tethered lid.
- 2-Nozzle boomless tip quick detach spray boom – 24' total spray coverage.
- Shut-off valves to spray left or right independently.
- 12-Volt demand Remco pump: 5.0 GPM – 60 PSI maximum pressure.
- Adjustable pressure range (0 to 60 PSI) – pressure gauge included.
- Deluxe pistol grip spray gun w/ 25' of hose and adjustable brass tip.
- 8-Foot wiring harness w/ battery clips and ON/OFF switch; commercial fuse.

PART	DESCRIPTION	PRICE (H)
WH-UTV65BLHM	60 USG Boomless Hitch Mount Sprayer w/ spray gun	1014.15



WorkHorse 60 Gallon Boomless 3-Point Sprayer

- 60 US gallon poly tank with drain and 5" tethered lid.
- 2-Nozzle boomless tip quick detach spray boom – 24' total spray coverage.
- Shut-off valves to spray left or right independently.
- 12-Volt demand Remco pump: 5.0 GPM – 60 PSI maximum pressure.
- Adjustable pressure range (0 to 60 PSI) – pressure gauge included.
- Deluxe pistol grip spray gun w/ 25' of hose and adjustable brass tip.
- 8-Foot wiring harness w/ battery clips and ON/OFF switch; commercial fuse.

PART	DESCRIPTION	PRICE (H)
WH-LG65BL3PT	40 Gallon Boomless 3-Point Sprayer w/ spray gun	651.60



WorkHorse 60 Gallon 3-Point Sprayer

- 60 US gallon poly tank with drain and large fill mouth – 5 inch tethered lid.
- 3-Section 7 nozzle boom with 110° fan spray tips covers approximately 140 inches.
- 12-Volt demand Remco pump: 2.2 GPM – 60 PSI maximum pressure.
- Adjustable pressure range (0 to 60 PSI).
- Deluxe pistol grip spray gun w/ 25' of hose and adjustable brass tip.
- 8-Foot wiring harness w/ battery clips and ON/OFF switch; commercial grade fuse.

PART	DESCRIPTION	PRICE (H)
WH-LG6573PT	60 Gallon 3-Point 7-Nozzle Sprayer w/ spray gun	1102.35

Sprayers and No-Drift Applicators



Chapin 24-Volt Battery Powered Push Sprayer

The Chapin 12-gallon 24V Push Sprayer is the measure of versatility. The boom arm can quickly be positioned on the left or the right to accommodate any job. The 12" pneumatic tires make it easy to navigate uneven terrain, while the 12 US gallon tank capacity allows for large area coverage. Large tank lid makes filling easy. Switch from boom spraying to spot spraying using the wand with the flip of a switch.

- 12 US Gallon capacity poly tank with large lid opening for easy filling and cleaning.
- Left to right position-able boom with flat fan spray tip.
- Pump operates at 40 PSI with a 0.4 – 0.5 GPM Spray/Flow Rate.
- Powered by a 24V rechargeable Lithium Ion battery w/ 1.75 hour approx. run time.
- 20-inch Poly Spray wand with 48" hose.
- Viton seals for chemical use.
- Powder-coated steel frame.

PART	DESCRIPTION	PRICE(I)
97900	24V Battery Powered Push Sprayer w/ Spray Wand	490.80



Dandy-Lion Killer No Drift Applicators

This gravity fed applicator features the "Tru-Kleen" tank that ensures the solution in the tank completely empties. The no-drift design allows you to get as close to non-target areas on established turf without fear of overspray or drift. Too windy to spray? Not an issue with these applicators! The manifold tube distributes the solution evenly across the roller ensuring good coverage. Stocked in 2 sizes with repair parts available.

- WR36: 3-gallon push-type with adjustable handle; 36" wide roller.
- WR48: 12-gallon pull-type with adjustable hitch; 48" wide roller.
- WR72: 25-gallon pull-type; 72" wide roller – SPECIAL ORDER ONLY.

PART	DESCRIPTION	PRICE(I)
WR36	3-gallon 36" roller push-type no-drift applicator	553.45
WR48	12-gallon 48" roller tow-type no-drift applicator	794.75
WR72	25-gallon 72" roller tow type no-drift applicator	1099.45



Comes Fully Assembled

WorkHorse 5 Gallon Rechargeable Spot Sprayer

- 5 US Gallon (18.9L) Corrosion Resistant Polyethylene Tank
- 1.0 GPM Demand Pump powered by 12V Rechargeable battery
- Up to 40 Gallons of spraying on one battery charge
- Up to 12 foot vertical and 25 foot horizontal spray distance capacity
- Complete with Commercial Grade Wiring Harness, 9' Coil Hose, and AC Charger

PART	DESCRIPTION	PRICE(I)
WH-LG05SS	5 Gallon Rechargeable Spot Sprayer	199.95



Wick Applicator

- A handy applicator for applying selective and non-selective herbicides in areas where overspray and drift are a concern.
- Variable flow rate and manual gravity flow shut-off.

PART	DESCRIPTION	PRICE(H)
WICK	Wick Spot Applicator	39.95



Space Saver 200 US Gallon Compact Sprayer

- Fits sideways into a standard short or long box pick-up truck bed leaving room for tools, equipment or product with hose reel positioned for curb-side applications.
- Low profile tank design offers 200 US Gallon capacity with the safety of rear-view mirror visibility.
- Tank includes return from pump for agitation and drain hose with ball valve.
- Hypro D403 Diaphragm pump powered by a reliable Honda GX160 engine.
- Adjustable pressure regulator with liquid-filled vibration resistant pressure gauge.
- Includes 300' of 600 PSI hose on a 12-Volt Electric Hose Reel with ON/OFF push button switch, solenoid, and circuit breaker.
- Iron-ready fittings and TeeJet Lawn spray gun with quick coupler fittings included.
- Optional Fiesta™ spray guns with quick coupler fittings also available.
- Powder-coated frame; sprayer footprint is only 66" x 49".

PART	DESCRIPTION	PRICE
SPACESAVER	Space Saver Truck Mount Sprayer – 200 USG	CALL
FIESTAJET-QC	Fiesta™ Ready Fan Spray Gun w/ QC fitting.	CALL
FIESTASPOT-QC	Fiesta™ Ready Spot Spray Gun w/ QC fitting.	CALL

ULV Applicators



Twister XL³ Motorized Knapsack ULV Sprayer

Featuring a remarkable nozzle and blower system that outperforms the competition in value, durability, and performance, the Twister XL3 is the most impressive ULV backpack applicator in the world. Ideal for use around golf courses, campgrounds, parks, farms, etc., to control mosquitoes and flies.

- Single high output Microtec™ nozzle.
- Powered by a Honda 4-stroke motor. Low emission, high performance engine.
- 95% of the droplets below 20 microns at flow rates up to 6 oz/min (178 ml/min).
- High speed rotary, 3-stage, belt driven blower; 95 CFM unrestricted. 3 PSI max.
- Interchangeable restricting orifice to produce flow rate of 1.5 oz/min (45 ml/min); 500 ml/min using optional dual nozzle attachment (kit # 39716 – special order).
- Fuel Tank – 17 oz. (500 ml); approximate run time is 55 minutes.
- Formulation Tank – 1 gallon (3.78 litres).
- 36 lbs (16.3 kg) dry weight.

PART	DESCRIPTION	PRICE (I)
TWISTERXL3	Motorized Knapsack ULV Sprayer	CALL

Hurricane Ultra II Low Volume Applicator

The Hurricane Ultra II ULV mister is an electric portable aerosol applicator that dispenses both oil and water-based products including Insecticides, Fungicides, Disinfectant, and Germicides.

The Hurricane Ultra II is ideal for use in spraying industrial and residential areas. Farms, greenhouses, warehouses, animal care facilities, sanitation, germicidal spraying and disease control programs are just a few of the markets where the Hurricane Ultra II is used. Its rugged design handles corrosive liquids and heavy impacts.

- Solid stainless-steel metering valve for delivering precise outputs and maximizing use of chemicals. Adjustable from 0 to 4.5 gallons per hour.
- Droplet sizes can be controlled for both ULV spraying and residual spraying.
- Translucent, low profile 3.8L capacity tank design virtually eliminates tipping... empty or full!
- 110-Volt motor with 20,000 RPM continuous duty.
- Dimensions: 12" L x 12" W x 14" H; weight 3 kgs (6.6 lbs.) empty

PART	DESCRIPTION	PRICE (I)
HURRICANE	Hurricane Ultra II Low Volume Applicator – 110V	CALL

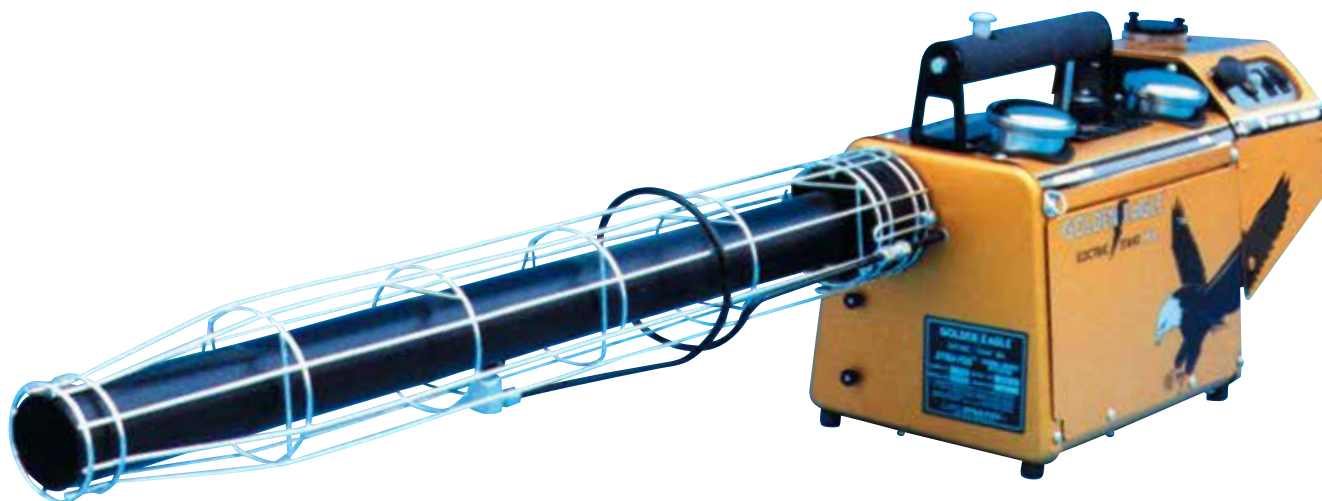


Fogmaster Jr. Utility ULV Fogger

- Control flying insects on patios and lawns, hotel room smoke odours, or apply BT or soap solutions to gardens. Ideal for misting water on cut flowers and interior foliage or for raising humidity in a room or hobby greenhouse. Perfect size and capacity for the homeowner.
- Easy to use - twist power head to remove tank and fill with your solution.
- Adjust fog output with rotary valve; 15 to 40-micron droplet size.
- 110-Volt power cord.
- 946 ml. (1 US quart) tank capacity.

PART	DESCRIPTION	PRICE (I)
FOGMASTER-JR	ULV Sprayer – 946 ml. tank	CALL

Thermal Foggers / ULV Applicators



Golden Eagle™ Thermal Fogger

The Golden Eagle Thermal Fogger easily, efficiently, and economically dispenses oil-based insecticides, fungicides, germicides, disinfectants, odour control, and other chemical products.

The Golden Eagle features a revolutionary new electric starting system to assure greater reliability, effectiveness, fuel efficiency, and ease of operation eliminating the need for manual starting.

No other machine surpasses the Golden Eagle's application capacity or its speed in completing difficult chemical application jobs at warehouses, factories, greenhouses, parks, campgrounds, cattle/swine/poultry operations, and much more.

Specifications:

- Formulation Output: Thermal aerosol fog, resonant pulse principle – 0 - 9 gallons / hour; 0.5 - 50 micron droplet size.
- Engine Performance: 30 HP, 22 KW.
- Fuel Consumption: 0.5 gallons / hour.
- Tank Capacities: 1.0 L Fuel, 4.2 L formulation.
- Power Supply: 8 x 1.5 V D-size alkaline batteries or auxiliary 12 V cigarette lighter adapter (supplied).
- Dimensions: 52" long x 9.5" wide x 14.5" high.
- Weight (empty): 8.6 kgs (19 lbs)
- Weight (full): 12.2 kgs (27 lbs)

PART	DESCRIPTION	PRICE (I)
GOLDEN	Golden Eagle Fogger	CALL



Truck-Mount Ultra Low Volume Applicators

Curtis Dyna-Fog has been the world's leader in aerosol applicator technology with more than 30 years of design and manufacturing experience.

Offering a range of truck-mounted ULV applicators with flexibility in options such as pumps, engine brands, and radar or GPS speed sensing allow complete customizing to fit your needs. Curtis Dyna-Fog are manufactured with high quality components to ensure low maintenance costs and ease of use. ULV applicators are a cost-effective way to control environmental pests such as mosquitoes to help reduce insect borne diseases such as West Nile Virus.

Contact your Even-Spray Sales Representative for more details.



Typhoon 1 ULV Applicator shown