



**Homestead 3-PT. Sprayers**

**Features:**

- Category I or II Hitch configuration available
- Sprayers come complete with Hypro Cast Series Roller Pump
- TeeJet manual 17Y Selector Valve for boom control standard on all models. Optional electric boom control upgrade is available
- 4 Point stand for ease of storage when not in use
- 1 Year Sprayer Warranty

**1. Select Your Sprayer – PLEASE SPECIFY 540 or 1000 RPM**

| PART            | DESCRIPTION                            | PRICE (I) |
|-----------------|--|-----------|
| HOMESTEAD       | 50 US Gallon 3-PT. Sprayer             | CALL      |
| HOMESTEAD-HD110 | 110 US Gallon 3-PT. Heavy Duty Sprayer | CALL      |
| HOMESTEAD-HD150 | 150 US Gallon 3-PT. Heavy Duty Sprayer | CALL      |

**2. Select Your Optional Equipment**

Homestead sprayer options give you the flexibility to customize your sprayer the way you need it. Five boom sizes (12' & 18' for 55 gallon sprayer) and 20', 30', & 45' for the 110 and 150 US gallon HD models or go boomless with your choice of either Hypro XT Series or Boominator™ spray nozzles.

| PART          | DESCRIPTION                                  | PRICE (I) |
|---------------|--|-----------|
| BOOM12        | Boom – 12 Foot Spray Pattern (20" spacing)   | CALL      |
| BOOM18        | Boom – 18 Foot Spray Pattern (20" spacing)   | CALL      |
| BOOM20        | Boom – 20 Foot Spray Pattern (20" spacing)   | CALL      |
| BOOM30        | Boom – 30 Foot Spray Pattern (20" spacing)   | CALL      |
| BOOM45        | Boom – 45 Foot Spray Pattern (20" spacing)   | CALL      |
| BOOMLESSHYPRO | Boomless kit w/ Hypro XT (Stainless) Nozzles | CALL      |
| BOOMLESSBOOM  | Boomless kit w/ Boominator™ Nozzles          | CALL      |
| ATVHR-H       | Hose Reel, 30' Hose, Spray Wand, & Bracket   | CALL      |
| HOMESTEAD-EC  | Electric Boom Control Upgrade                | CALL      |



**Homestead ATV Skid Mount Sprayers**

Choose from two tank sizes (50 & 100 US Gallon) with either a Honda-driven Ace pump or a 12 V electric pump. Units as listed below do not include the boom, but you can order either the 12' or 18' wide standard boom or the boomless spray tip booms as indicated in the Homestead 3-PT sprayer above.

- 4 HP Honda engine with Ace Centrifugal pump (57 PSI max / 22 GPM max) or Delavan 12 Volt Electric pump (100 PSI max / 7 GPM).
- High quality plumbing parts from TeeJet and Banjo used.
- All units built standard with Manual controls (TeeJet Shut-off & regulating valves) and Hose Reel with Spray Wand with 30' of hose.
- The **ATV100EC** comes with TeeJet 744E Controller and a 3 bank of 430 Series valves.

| PART     | DESCRIPTION  | PRICE (I) |
|----------|--|-----------|
| ATV50    | 50 Gallon ATV Sprayer – 4 HP Honda / Ace Pump – NO BOOM  | CALL      |
| ATV100   | 100 Gallon ATV Sprayer – 4 HP Honda / Ace Pump – NO BOOM | CALL      |
| ATV100EC | 100 Gallon ATV Sprayer – 4 HP Honda / Ace Pump – NO BOOM | CALL      |
| ATV100E  | 100 Gallon ATV Sprayer – 12V Electric Pump – NO BOOM     | CALL      |



**Chapin Pro XP Series Tank Sprayers**

- Available in 1, 2, and 3 Gallon tank sizes for the lawn / landscaping professional.
- Viton Seals and Gaskets for use with a wide range of fertilizers and chemicals.
- Cushion grip shut-off with internal filter and lock-on trigger feature.
- SureSpray® in-tank anti-clog filter blocks debris from hose, trigger, and spray tip.
- Pressure relief valve built into translucent poly non-corrosive spray tank.

| PART                                    | DESCRIPTION                                    | PRICE     |
|---|--|-----------|
| 26011XP                                 | 1 Gallon Pro XP Series Tank Sprayer            | 56.45 (G) |
| 26021XP                                 | 2 Gallon Pro XP Series Tank Sprayer            | 60.70 (G) |
| 26031XP                                 | 3 Gallon Pro XP Series Tank Sprayer            | 76.90 (G) |
| Chapin Pro XP Series Tank Sprayer Parts |  |           |
| 301631-1                                | Replacement Pump – Pro Series Sprayer          | 40.95 (F) |
| 6-8130                                  | Hose Assembly – Pro Series Sprayer             | 25.40 (F) |
| 6-8219                                  | 20" Poly Wand (no nozzle) – Pro Series Sprayer | 37.20 (F) |
| 6-8131                                  | Nozzle Assembly – Pro Series Sprayer           | 19.85 (F) |
| 6-8138                                  | Replacement Trigger for Pro Series Sprayer     | 22.20 (F) |
| 6-4601                                  | Seal and Gasket Kit – Pro Series Sprayer       | 29.20 (F) |
| 6-4605                                  | Pressure Relief Valve – Pro Series Sprayer     | 18.35 (F) |
| 3-2694-11                               | Outlet Tube – Pro Series Sprayer               | 4.75 (F)  |



**Chapin Industrial Series Sprayer**

- 3-Gallon poly tank with wide mouth opening for easy filling and cleaning.
- Viton seals and gaskets designed for industrial and concrete applications.
- Compatible with most industrial chemicals.
- 18-Inch brass wand, nozzle, and shut-off with lock-on feature.
- Pressure relief valve; anti-clog filter.

| PART    | DESCRIPTION      | PRICE(G) |
|---------|------------------|----------|
| 22790XP | 3-Gallon Sprayer | 147.85   |



**Chapin Lawn and Garden Sprayer**

- 1-Gallon translucent tank with funnel top for easy filling and cleaning.
- Compatible with common fertilizers, weed killers, and pesticides.
- 12-Inch wand, 34-inch hose, adjustable nozzle, and comfortable spray handle.
- In-tank filter reduces clogging.

| PART  | DESCRIPTION      | PRICE(I) |
|-------|------------------|----------|
| 20000 | 1-Gallon Sprayer | 22.35    |



**SureSpray™ Series Tank Sprayers**

- Available in 1, 2, and 3 Gallon tank sizes
- Multi-purpose sprayer designed for pesticides, fertilizers, and general cleaning
- Nitrile seals
- Translucent non-corrosive and durable spray tank
- Ergonomic pump handle and funnel top for ease of filling

| PART  | DESCRIPTION                                   | PRICE     |
|---|---|-----------|
| 20010                                       | 1 Gallon SureSpray™ Series Tank Sprayer       | 31.95 (G) |
| 20020                                       | 2 Gallon SureSpray™ Series Tank Sprayer       | 42.65 (G) |
| 20030                                       | 3 Gallon SureSpray™ Series Tank Sprayer       | 53.45 (G) |
| Chapin SureSpray™ Series Tank Sprayer Parts |   |           |
| 6-7749                                      | 18" Poly Wand Extension (nozzle not included) | 14.05 (F) |
| 6-2001                                      | Hose Assembly                                 | 17.10 (F) |
| 6-2000                                      | Replacement Trigger Assembly                  | 13.40 (F) |
| 6-6003                                      | Poly Adjustable Nozzle                        | 7.85 (F)  |
| 301128                                      | Replacement Pump Assembly                     | 16.60 (F) |
| 6-1925                                      | Seal and Gasket Set                           | 20.90 (F) |



Wand not included

**Chapin 80° Spot Spray Shield Kit**

- Fits most Chapin brand backpack and tank sprayers.
- Threads onto wand.
- Reduces spray drift damage on non-target plants.
- Cone shield, 80° spray tip, and body included in kit.

| PART   | DESCRIPTION      | PRICE(G) |
|--------|------------------|----------|
| 6-7773 | Spray Shield Kit | 31.15    |



**Chapin 48 oz. Hand Sprayer**

- 48 US oz poly non-corrosive tank
- Viton seals
- Adjustable cone spray nozzle
- SureSpray™ Anti-clog filter

| PART | DESCRIPTION         | PRICE(G) |
|------|---------------------|----------|
| 1046 | 48 oz. Hand Sprayer | 31.15    |



**32 oz. Upside Down Sprayer**

- Sprays in any position – even upside.
- Adjustable spray nozzle – fine mist to solid stream.

| PART | DESCRIPTION         | PRICE(G) |
|------|---------------------|----------|
| 1105 | Upside Down Sprayer | 6.40     |





**Chapin 63800 Wide Mouth Pro Series Piston Pump Backpack Sprayer**

- 4 US gallon true capacity tank w/ extra large 6" easy-fill diameter opening.
- Viton™ Seals and Gaskets for chemical spraying.
- Strainer/filter basket helps keep debris out of tank.
- Cushion grip spray handle reduces hand fatigue.
- Adjustable padded shoulder and waist straps for the perfect fit and comfort.
- Pumping handle can be set for left or right hand use.
- Brass, poly fan, and poly cone nozzles included.
- 20" Poly spray wand extension.

| PART  | DESCRIPTION   | PRICE (F)     |
|-------|---|---------------|
| 63800 | Wide Mouth Pro Series 4-Gallon Piston Pump Backpack Sprayer | <b>155.25</b> |



**Chapin 64800 Pro Series Diaphragm Pump Backpack Sprayer**

- Diaphragm-style pump mechanism for spraying wettable powders.
- 4 US gallon true capacity with large 4" diameter opening for easy filling.
- Strainer/filter basket helps keep debris out of spray tank.
- Cushion grip spray handle reduces hand fatigue.
- Adjustable padded shoulder and waist straps for the perfect fit and comfort.
- Pumping handle can be oriented for either left or right hand use.
- Brass, poly fan, and poly cone nozzles included.
- Viton™ Seals and Gaskets for chemical spraying.

| PART  | DESCRIPTION   | PRICE (F)     |
|-------|---|---------------|
| 64800 | Pro Series 4-Gallon Diaphragm Pump Backpack Sprayer | <b>147.60</b> |



**Chapin 63900 Commercial Duty Dual Displacement Pro Backpack Sprayer**

- Dual displacement piston and diaphragm pump technology provides increased pressure (120+ PSI) and eliminates piston leaking.
- Self-cleaning JetClean design minimizes clogging.
- 4 US gallon true capacity.
- 6" Extra large diameter opening with strainer basket for easy, debris-free filling.
- Comfort trigger handle w/ serviceable filter.
- Viton™ Seals for chemical spraying.
- Comfortable back pad/double padded shoulder straps.
- Swing away left or right reversible pump handle.
- Brass, poly fan, and poly cone nozzles included.

| PART  | DESCRIPTION  | PRICE (F)     |
|-------|--|---------------|
| 63900 | 4-Gallon Professional Dual Displacement Backpack Sprayer | <b>196.45</b> |



**Chapin 24V Rechargeable Battery Powered Electric Backpack Sprayer**

- 4 US Gallon poly solution tank.
- Powered by 24V Lithium Ion rechargeable Battery. (Base included.)
- One charge sprays up to two hours continuous (58 US gallons).
- Weighs 39% less than competitive units (9.8 lbs vs. 16 lbs).
- Sprays at 35 - 40 PSI.
- Equipped with Viton® seals and gaskets for chemical spraying.
- 6" Wide Mouth™ cap with strainer for easy, debris-free filling.
- Built-in carrying handle makes cap removal easy and carrying the unit a breeze.
- Uses the same 63800 Pro Series tank assembly, filters, and shut-off.
- Adjustable brass, poly fan, and poly cone nozzles included.

| PART   | DESCRIPTION  | PRICE (F)     |
|--------|--|---------------|
| 63924  | Chapin 24V Backpack Sprayer w/ charger & battery   | <b>323.50</b> |
| 6-8238 | 24V Lithium Ion Rechargeable Battery (2.0Ah) and Charger Base Combo for 63924 Backpack Sprayer | <b>79.40</b>  |

**Genuine Chapin Backpack Sprayer Parts, Repair Kits, and Accessories**

| PART    | DESCRIPTION  | PRICE (F)    |
|---------|--|--------------|
| 6-8224  | Piston Diaphragm Pump Assembly – 63900                     | <b>89.00</b> |
| 6-8225  | Piston Collar Assembly – 63900                             | <b>26.70</b> |
| 6-8180  | Piston Pump Repair Seal Kit – 63800                        | <b>31.45</b> |
| 6-8120B | Repair Kit for 6-8138 Trigger Assembly – All Chapin models | <b>13.00</b> |
| 6-8138  | Trigger Assembly – All Chapin models                       | <b>22.20</b> |
| 6-8219  | 20" Poly Spray Wand Assembly – 63800, 64800, 63924         | <b>37.20</b> |
| 6-8122  | Brass Adjustable Nozzle – All Chapin models                | <b>13.55</b> |
| 6-8148  | Nozzle Elbow Assembly – All Chapin models                  | <b>7.35</b>  |
| 6-8105  | 48" Hose Assembly – All Chapin models                      | <b>20.90</b> |
| 6-8146  | 4" Filter Basket with Cap – 64800                          | <b>18.80</b> |

| PART     | DESCRIPTION   | PRICE (F)    |
|----------|---|--------------|
| 6-8146-1 | 6" Filter Basket with Cap – 63800, 63900, 63924         | <b>33.20</b> |
| 6-8183   | Complete Diaphragm Pump Assembly – 64800                | <b>69.70</b> |
| 6-8179   | Piston/Cup/Linkage Assembly – 63800                     | <b>47.95</b> |
| 6-8178   | Cylinder Assembly – 63800                               | <b>21.60</b> |
| 6-8151   | Relief Valve – All Chapin models                        | <b>17.65</b> |
| 6-8137   | Carry Strap – 63800, 64800, 63924                       | <b>25.50</b> |
| 6-8152   | Wand Clip – 63800, 64800, 63924                         | <b>2.05</b>  |
| 6-7780   | 2 Nozzle Poly Boom – All Chapin models                  | <b>41.90</b> |
| 6-7781   | 3 Nozzle Poly Boom – All Chapin models                  | <b>51.40</b> |
| 6-7773   | Spot Spraying Cone Shield w/ Nozzle – All Chapin models | <b>31.15</b> |



**WorkHorse 25 Gallon Deluxe ATV Boomless Sprayer**

- 25 US gallon poly tank with large fill mouth.
- Quick-detach 2-Nozzle spray boom with check valves and strainers.
- 12-Volt demand pump; 4.0 GPM – 45 PSI maximum pressure.
- 24 Foot total spray coverage.
- Shut-off valves to spray right or left side independently.
- Boom adjustable to 3 different heights.
- Deluxe pistol grip w/ 15' of hose and adjustable spray tip.
- Pressure gauge (adjustable pressure from 0 to 60 PSI).
- 8-Foot wiring harness with battery clips and switch.
- ATV mounting straps included.
- 2 Year Manufacturer's warranty from date of manufacture.

| PART       | DESCRIPTION                    | PRICE (H) |
|------------|--------------------------------|-----------|
| WH-ATV25BL | 25 Gallon ATV Boomless Sprayer | 593.55    |



Folds up for storage or transportation.

Shown mounted to WorkHorse Spot Sprayer - Sprayer not included.

**Deluxe 7 Nozzle ATV Boom Kit**

- Attaches / detaches to the WorkHorse Spot Sprayer using a Quick Mount system to convert unit for use on an ATV.
- 7-Nozzle fold-out boom w/ flat fan style spray tips, check valves, and strainers.
- Provides up to 140 inch total spray coverage.
- Spring loaded boom arms fold easily for storage or travel between spray sites.
- 2 Year Manufacturer's warranty from date of manufacture.

| PART        | DESCRIPTION           | PRICE (H) |
|-------------|-----------------------|-----------|
| WH-ATV007BK | 7 Nozzle ATV Boom Kit | 209.95    |



**Deluxe 2 Nozzle ATV Boom Kit**

- Attaches / detaches to the WorkHorse Spot Sprayer using a Quick Mount system to convert unit for use on an ATV.
- 2-Nozzle boom w/ check valves and strainers provides up to 80 inch total spray coverage.
- 2 Year Manufacturer's warranty from date of manufacture.

| PART        | DESCRIPTION           | PRICE (H) |
|-------------|-----------------------|-----------|
| WH-ATV002BK | 2 Nozzle ATV Boom Kit | 99.95     |



**WorkHorse 25 Gallon Deluxe Tow Behind Sprayer**

- 25 US gallon poly tank with large fill mouth.
- 2-Nozzle break-away style boom with 80 inch spray coverage.
- 12-Volt demand pump; 2.0 GPM – 60 PSI maximum pressure.
- Deluxe pistol grip w/ 15' of hose and adjustable spray tip.
- Pressure gauge (adjustable pressure from 0 to 60 PSI).
- 8-Foot wiring harness with battery clips and switch.
- 4.10/3.50 x 6 Pneumatic tires.
- Heavy duty corrosion resistant frame.
- 2 Year Manufacturer's warranty from date of manufacture.

| PART       | DESCRIPTION                  | PRICE (H) |
|------------|------------------------------|-----------|
| WH-LG25DTS | 25 Gallon Tow Behind Sprayer | 496.05    |



**WorkHorse 25 Gallon Deluxe Spot Sprayer**

- 25 US gallon poly tank with large fill mouth.
- Boom Ready – Add either the 2 nozzle or deluxe 7 nozzle boom kit.
- 12-Volt Demand pump; 2.0 GPM – 60 PSI maximum pressure.
- Deluxe pistol grip w/ 15' of hose and adjustable spray tip.
- Pressure gauge (adjustable pressure from 0 to 60 PSI).
- 8-Foot wiring harness with battery clips and switch.
- In-line Shut-off for quick On/OFF spraying.
- 2 Year Manufacturer's warranty from date of manufacture.

| PART       | DESCRIPTION            | PRICE (H) |
|------------|------------------------|-----------|
| WH-LG25DSS | 25 Gallon Spot Sprayer | 317.95    |

**WorkHorse Sprayer Parts and Accessories**

- Need a part from your WorkHorse Sprayer? We can help!

| PART      | DESCRIPTION   | PRICE     |
|-----------|---|-----------|
| WH-101CA  | Optional 12-Volt Car Power Adapter Kit                  | 17.75(E)  |
| WH-600117 | In-line Strainer w/ Check Valve                         | 4.20(H)   |
| WH-600122 | Y-Valve w/ Shut-Offs – FGH x MGH x MGH threads          | 8.25(H)   |
| WH-600133 | Spray Tank Lid – all models                             | 12.95(H)  |
| WH-600151 | Spray Wand Clip   | 3.75(H)   |
| WH-600156 | Spray Wand & 15' Hose Assembly – complete               | 61.80(H)  |
| WH-600185 | Elbow Fitting – 3/8" Hose Barb x Quick Disconnect (QD)  | 2.75(H)   |
| WH-600248 | Boomless Spray Nozzle – left side                       | 56.55(H)  |
| WH-600249 | Boomless Spray Nozzle – right side                      | 56.55(H)  |
| WH-600211 | Quick Disconnect (QD) Fitting – 2.0 GPM pump only       | 8.85(H)   |
| WH-600212 | Quick Disconnect (QD) Fitting – 4.0 GPM pump only       | 8.85(H)   |
| WH-600216 | In-line Shut-Off Valve – FGH x MGH thread               | 6.95(H)   |
| WH-600223 | Elbow Fitting – 3/8" hose barb x QD (4.0 GPM pump only) | 3.95(H)   |
| WH-640451 | 2.2 GPM 12-Volt Remco Pump                              | 160.15(H) |
| WH-630031 | 5.0 GPM 12-Volt Remco Pump                              | 284.05(H) |
| WH-600132 | WorkHorse 25 US Gallon Tank w/ 6" Lid                   | 131.85(H) |



**WorkHorse 40 & 60 Gallon Deluxe Tow Behind Sprayers**

- 40 US gallon model features 2.2 GPM / 60 PSI max. Remco 12-Volt demand pump, 3-Section 5-nozzle boom w/ 110° fan spray tips; covers approx. 100".
- 60 US gallon model features 5.0 GPM / 60 PSI max. Remco 12-Volt demand pump, 3-Section 7-nozzle boom w/ 110° fan spray tips; covers approx. 140".
- Adjustable pressure range (0 to 60 PSI) – pressure gauge included.
- Deluxe pistol grip spray gun w/ 25' of hose and adjustable brass tip.
- 8-Foot wiring harness w/ battery clips and ON/OFF switch; commercial fuse.
- H.D. corrosion resistant frame; poly tank includes drain and 5" tethered lid.

| PART        | DESCRIPTION                            | PRICE (H) |
|-------------|--|-----------|
| WH-LG425DTS | 40 Gallon Tow Sprayer w/ 5-nozzle boom | 983.85    |
| WH-LG657DTS | 60 Gallon Tow Sprayer w/ 7-nozzle boom | 1129.90   |



**WorkHorse 40 Gallon 3-Point Sprayer**

- 40 US gallon poly tank with drain and large fill mouth – 5 inch tethered lid.
- 5-Nozzle boom with standard 110° flat fan spray tips – 100" total spray coverage.
- Deluxe pistol grip spray gun w/ 25' of hose and adjustable brass tip.
- 12-Volt demand Remco pump: 2.2 GPM – 60 PSI maximum pressure.
- Adjustable pressure range (0 to 60 PSI) – pressure gauge included.
- 8-Foot wiring harness w/ battery clips and ON/OFF switch; commercial grade fuse.

| PART        | DESCRIPTION                                     | PRICE (H) |
|-------------|---|-----------|
| WH-LG4253PT | 40 Gallon 3-Point 5-Nozzle Sprayer w/ spray gun | 985.65    |



*WH-BK007HM Boom Shown  
(also sold separately)*

**WorkHorse 40 or 60 Gallon Hitch Mount Skid Sprayer**

- 40 or 60 Gallon poly tank with drain and large fill mouth; 5" tethered lid.
- Deluxe pistol spray grip with 25' of hose and adjustable brass tip.
- 12-Volt Remco Demand Pump: 2.2 GPM - 60 PSI maximum pressure.
- Adjustable pressure range (0 to 60 PSI); pressure gauge included.
- 8' Wiring harness with battery clips, ON/OFF switch with commercial-grade fuse.
- 40-Gallon model includes a 5-Nozzle heavy-duty folding boom (100" coverage) with exclusive hitch mount design featuring 300 degrees of adjustability; fits standard 2" hitch receiver.
- 60-Gallon model, same as above except with 7-Nozzle boom (140" coverage).

| PART        | DESCRIPTION                        | PRICE (H) |
|-------------|------------------------------------|-----------|
| WH-UTV425HM | 40 Gallon Hitch Mount Skid Sprayer | 868.10    |
| WH-UTV627HM | 60 Gallon Hitch Mount Skid Sprayer | 983.85    |



**WorkHorse 60 Gallon Boomless Hitch Mount Sprayer**

- 60 US gallon poly tank with drain and 5" tethered lid.
- 2-Nozzle boomless tip quick detach spray boom – 24' total spray coverage.
- Shut-off valves to spray left or right independently.
- 12-Volt demand Remco pump: 5.0 GPM – 60 PSI maximum pressure.
- Adjustable pressure range (0 to 60 PSI) – pressure gauge included.
- Deluxe pistol grip spray gun w/ 25' of hose and adjustable brass tip.
- 8-Foot wiring harness w/ battery clips and ON/OFF switch; commercial fuse.

| PART         | DESCRIPTION                                      | PRICE (H) |
|--------------|--|-----------|
| WH-UTV65BLHM | 60 USG Boomless Hitch Mount Sprayer w/ spray gun | 1014.15   |



**WorkHorse 60 Gallon Boomless 3-Point Sprayer**

- 60 US gallon poly tank with drain and 5" tethered lid.
- 2-Nozzle boomless tip quick detach spray boom – 24' total spray coverage.
- Shut-off valves to spray left or right independently.
- 12-Volt demand Remco pump: 5.0 GPM – 60 PSI maximum pressure.
- Adjustable pressure range (0 to 60 PSI) – pressure gauge included.
- Deluxe pistol grip spray gun w/ 25' of hose and adjustable brass tip.
- 8-Foot wiring harness w/ battery clips and ON/OFF switch; commercial fuse.

| PART         | DESCRIPTION                                     | PRICE (H) |
|--------------|---|-----------|
| WH-LG65BL3PT | 40 Gallon Boomless 3-Point Sprayer w/ spray gun | 651.60    |



**WorkHorse 60 Gallon 3-Point Sprayer**

- 60 US gallon poly tank with drain and large fill mouth – 5 inch tethered lid.
- 3-Section 7 nozzle boom with 110° fan spray tips covers approximately 140 inches.
- 12-Volt demand Remco pump: 2.2 GPM – 60 PSI maximum pressure.
- Adjustable pressure range (0 to 60 PSI).
- Deluxe pistol grip spray gun w/ 25' of hose and adjustable brass tip.
- 8-Foot wiring harness w/ battery clips and ON/OFF switch; commercial grade fuse.

| PART        | DESCRIPTION                                     | PRICE (H) |
|-------------|---|-----------|
| WH-LG6573PT | 60 Gallon 3-Point 7-Nozzle Sprayer w/ spray gun | 1102.35   |



# Sprayers and No-Drift Applicators



### Chapin 24-Volt Battery Powered Push Sprayer

The Chapin 12-gallon 24V Push Sprayer is the measure of versatility. The boom arm can quickly be positioned on the left or the right to accommodate any job. The 12" pneumatic tires make it easy to navigate uneven terrain, while the 12 US gallon tank capacity allows for large area coverage. Large tank lid makes filling easy. Switch from boom spraying to spot spraying using the wand with the flip of a switch.

- 12 US Gallon capacity poly tank with large lid opening for easy filling and cleaning.
- Left to right position-able boom with flat fan spray tip.
- Pump operates at 40 PSI with a 0.4 – 0.5 GPM Spray/Flow Rate.
- Powered by a 24V rechargeable Lithium Ion battery w/ 1.75 hour approx. run time.
- 20-inch Poly Spray wand with 48" hose.
- Viton seals for chemical use.
- Powder-coated steel frame.

| PART  | DESCRIPTION                                    | PRICE(I) |
|-------|--|----------|
| 97900 | 24V Battery Powered Push Sprayer w/ Spray Wand | 490.80   |



### Dandy-Lion Killer No Drift Applicators

This gravity fed applicator features the "Tru-Kleen" tank that ensures the solution in the tank completely empties. The no-drift design allows you to get as close to non-target areas on established turf without fear of overspray or drift. Too windy to spray? Not an issue with these applicators! The manifold tube distributes the solution evenly across the roller ensuring good coverage. Stocked in 2 sizes with repair parts available.

- WR36: 3-gallon push-type with adjustable handle; 36" wide roller.
- WR48: 12-gallon pull-type with adjustable hitch; 48" wide roller.
- WR72: 25-gallon pull-type; 72" wide roller – SPECIAL ORDER ONLY.

| PART | DESCRIPTION                                       | PRICE(I) |
|------|---|----------|
| WR36 | 3-gallon 36" roller push-type no-drift applicator | 553.45   |
| WR48 | 12-gallon 48" roller tow-type no-drift applicator | 794.75   |
| WR72 | 25-gallon 72" roller tow type no-drift applicator | 1099.45  |



Comes Fully Assembled

### WorkHorse 5 Gallon Rechargeable Spot Sprayer

- 5 US Gallon (18.9L) Corrosion Resistant Polyethylene Tank
- 1.0 GPM Demand Pump powered by 12V Rechargeable battery
- Up to 40 Gallons of spraying on one battery charge
- Up to 12 foot vertical and 25 foot horizontal spray distance capacity
- Complete with Commercial Grade Wiring Harness, 9' Coil Hose, and AC Charger

| PART      | DESCRIPTION                        | PRICE(I) |
|-----------|------------------------------------|----------|
| WH-LG05SS | 5 Gallon Rechargeable Spot Sprayer | 199.95   |



### Wick Applicator

- A handy applicator for applying selective and non-selective herbicides in areas where overspray and drift are a concern.
- Variable flow rate and manual gravity flow shut-off.

| PART | DESCRIPTION          | PRICE(H) |
|------|----------------------|----------|
| WICK | Wick Spot Applicator | 39.95    |



### Space Saver 200 US Gallon Compact Sprayer

- Fits sideways into a standard short or long box pick-up truck bed leaving room for tools, equipment or product with hose reel positioned for curb-side applications.
- Low profile tank design offers 200 US Gallon capacity with the safety of rear-view mirror visibility.
- Tank includes return from pump for agitation and drain hose with ball valve.
- Hypro D403 Diaphragm pump powered by a reliable Honda GX160 engine.
- Adjustable pressure regulator with liquid-filled vibration resistant pressure gauge.
- Includes 300' of 600 PSI hose on a 12-Volt Electric Hose Reel with ON/OFF push button switch, solenoid, and circuit breaker.
- Iron-ready fittings and TeeJet Lawn spray gun with quick coupler fittings included.
- Optional Fiesta™ spray guns with quick coupler fittings also available.
- Powder-coated frame; sprayer footprint is only 66" x 49".

| PART          | DESCRIPTION                                 | PRICE |
|---------------|---|-------|
| SPACESAVER    | Space Saver Truck Mount Sprayer – 200 USG   | CALL  |
| FIESTAJET-QC  | Fiesta™ Ready Fan Spray Gun w/ QC fitting.  | CALL  |
| FIESTASPOT-QC | Fiesta™ Ready Spot Spray Gun w/ QC fitting. | CALL  |

# ULV Applicators



### Twister XL<sup>3</sup> Motorized Knapsack ULV Sprayer

Featuring a remarkable nozzle and blower system that outperforms the competition in value, durability, and performance, the Twister XL3 is the most impressive ULV backpack applicator in the world. Ideal for use around golf courses, campgrounds, parks, farms, etc., to control mosquitoes and flies.

- Single high output Microtec™ nozzle.
- Powered by a Honda 4-stroke motor. Low emission, high performance engine.
- 95% of the droplets below 20 microns at flow rates up to 6 oz/min (178 ml/min).
- High speed rotary, 3-stage, belt driven blower; 95 CFM unrestricted. 3 PSI max.
- Interchangeable restricting orifice to produce flow rate of 1.5 oz/min (45 ml/min); 500 ml/min using optional dual nozzle attachment (kit # 39716 – special order).
- Fuel Tank – 17 oz. (500 ml); approximate run time is 55 minutes.
- Formulation Tank – 1 gallon (3.78 litres).
- 36 lbs (16.3 kg) dry weight.

| PART       | DESCRIPTION                    | PRICE (I) |
|------------|--------------------------------|-----------|
| TWISTERXL3 | Motorized Knapsack ULV Sprayer | CALL      |

### Hurricane Ultra II Low Volume Applicator

The Hurricane Ultra II ULV mister is an electric portable aerosol applicator that dispenses both oil and water-based products including Insecticides, Fungicides, Disinfectant, and Germicides.

The Hurricane Ultra II is ideal for use in spraying industrial and residential areas. Farms, greenhouses, warehouses, animal care facilities, sanitation, germicidal spraying and disease control programs are just a few of the markets where the Hurricane Ultra II is used. Its rugged design handles corrosive liquids and heavy impacts.

- Solid stainless-steel metering valve for delivering precise outputs and maximizing use of chemicals. Adjustable from 0 to 4.5 gallons per hour.
- Droplet sizes can be controlled for both ULV spraying and residual spraying.
- Translucent, low profile 3.8L capacity tank design virtually eliminates tipping... empty or full!
- 110-Volt motor with 20,000 RPM continuous duty.
- Dimensions: 12" L x 12" W x 14" H; weight 3 kgs (6.6 lbs.) empty

| PART      | DESCRIPTION                                     | PRICE (I) |
|-----------|---|-----------|
| HURRICANE | Hurricane Ultra II Low Volume Applicator – 110V | CALL      |

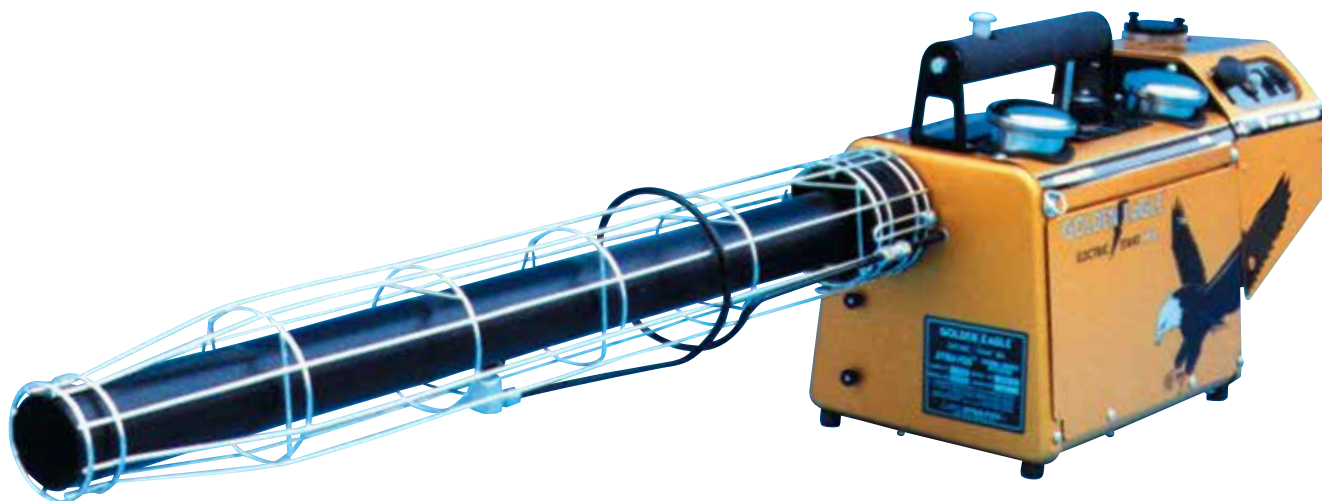


### Fogmaster Jr. Utility ULV Fogger

- Control flying insects on patios and lawns, hotel room smoke odours, or apply BT or soap solutions to gardens. Ideal for misting water on cut flowers and interior foliage or for raising humidity in a room or hobby greenhouse. Perfect size and capacity for the homeowner.
- Easy to use - twist power head to remove tank and fill with your solution.
- Adjust fog output with rotary valve; 15 to 40-micron droplet size.
- 110-Volt power cord.
- 946 ml. (1 US quart) tank capacity.

| PART         | DESCRIPTION                | PRICE (I) |
|--------------|----------------------------|-----------|
| FOGMASTER-JR | ULV Sprayer – 946 ml. tank | CALL      |

# Thermal Foggers / ULV Applicators



### Golden Eagle™ Thermal Fogger

The Golden Eagle Thermal Fogger easily, efficiently, and economically dispenses oil-based insecticides, fungicides, germicides, disinfectants, odour control, and other chemical products.

The Golden Eagle features a revolutionary new electric starting system to assure greater reliability, effectiveness, fuel efficiency, and ease of operation eliminating the need for manual starting.

No other machine surpasses the Golden Eagle's application capacity or its speed in completing difficult chemical application jobs at warehouses, factories, greenhouses, parks, campgrounds, cattle/swine/poultry operations, and much more.

### Specifications:

- Formulation Output: Thermal aerosol fog, resonant pulse principle – 0 - 9 gallons / hour; 0.5 - 50 micron droplet size.
- Engine Performance: 30 HP, 22 KW.
- Fuel Consumption: 0.5 gallons / hour.
- Tank Capacities: 1.0 L Fuel, 4.2 L formulation.
- Power Supply: 8 x 1.5 V D-size alkaline batteries or auxiliary 12 V cigarette lighter adapter (supplied).
- Dimensions: 52" long x 9.5" wide x 14.5" high.
- Weight (empty): 8.6 kgs (19 lbs)
- Weight (full): 12.2 kgs (27 lbs)

| PART   | DESCRIPTION         | PRICE (I) |
|--------|---------------------|-----------|
| GOLDEN | Golden Eagle Fogger | CALL      |



### Truck-Mount Ultra Low Volume Applicators

Curtis Dyna-Fog has been the world's leader in aerosol applicator technology with more than 30 years of design and manufacturing experience.

Offering a range of truck-mounted ULV applicators with flexibility in options such as pumps, engine brands, and radar or GPS speed sensing allow complete customizing to fit your needs. Curtis Dyna-Fog are manufactured with high quality components to ensure low maintenance costs and ease of use. ULV applicators are a cost-effective way to control environmental pests such as mosquitoes to help reduce insect borne diseases such as West Nile Virus.

Contact your Even-Spray Sales Representative for more details.



Typhoon 1 ULV Applicator shown